

Getting Started with the LabVIEW™ Real-Time Module

This document provides exercises to teach you how to develop a real-time project and VIs from setting up RT targets to building, debugging, and deploying real-time applications. This document provides references to the *LabVIEW Help* and other Real-Time Module documents for more information as you create the real-time application.

Contents

Installing and Configuring the Real-Time Module	2
Installing Real-Time Module Software	2
Configuring an RT Target.....	3
Installing RT Target Software	4
Exploring the LabVIEW Documentation	5
LabVIEW Help	5
LabVIEW Real-Time Module Release and Upgrade Notes	7
LabVIEW Real-Time Module Readme	7
Creating a Real-Time Project and Application	8
Creating a Project Using the Real-Time Project Wizard	8
Selecting the RT Target and Host Computer Configuration for the Application	10
Adding an RT Target to the Project.....	12
Exploring the Project and Application in the Project Explorer Window	13
Configuring RT Target Properties	17
Deploying and Running VIs on the RT Target	17
Building a Stand-Alone Real-Time Application.....	18
Creating a Real-Time Build Specification.....	18
Editing a Real-Time Build Specification.....	20
Building and Deploying a Stand-Alone Real-Time Application.....	20
Monitoring RT Target Resources and Errors.....	21
Monitoring RT Target Resources	21
Viewing RT Target Errors	22

Debugging RT Target VIs and Stand-Alone Applications.....	23
Debugging RT Target VIs	23
Debugging Stand-Alone Real-Time Applications.....	24
Summary	25
Installing the Real-Time Module and Configuring RT Targets	25
Using the Real-Time Project Wizard to Create Real-Time Projects	25
Using the Project Explorer Window to Manage and Configure Projects	25
Using the LabVIEW Application Builder to Create Stand-Alone Real-Time Applications	26
Using the Real-Time System Manager to Manage RT Target Resources	26
Using the RT Target Errors Dialog Box to View RT Target Error Logs	26
Debugging RT Target VIs and Stand-Alone Applications.....	27
Where to Go from Here	27
Real-Time Module Concepts.....	27
Real-Time Module Examples.....	27

Installing and Configuring the Real-Time Module

You must install the Real-Time Module software on a development computer, or host computer, and configure and install software on the target.

NI Measurement & Automation Explorer (MAX) provides access to National Instruments devices and systems. MAX can communicate with networked RT targets, also known as remote systems, located on the same subnet as the computer on which it resides. You can install the Real-Time Module software on the host computer and then use MAX to configure the RT target and install the Real-Time Module software and drivers on the target.

Installing Real-Time Module Software

You must install the LabVIEW development system on the host computer before attempting to install the Real-Time Module software and device drivers. Refer to the *LabVIEW Release Notes* for the LabVIEW installation instructions. Refer to the *LabVIEW Real-Time Module Release and Upgrade Notes* for the Real-Time Module and device driver installation instructions.

Configuring an RT Target

Before you can install software or drivers on an RT target, you must use MAX to configure the basic settings of the target.



Note You must connect networked RT targets to the same subnet as the host computer from which you launch MAX to perform the initial configuration.

Figure 1 shows an RT Series plug-in device, RT : : 0, under **My System** and two networked targets under **Remote Systems** in the MAX **Configuration** tree. The first networked target, 0 . 0 . 0 . 0, represents an unconfigured target. The second target, RT-PXI, is an RT Series PXI controller configured to automatically obtain an IP address from a DHCP server, as shown on the **Network Settings** tab of Figure 1.

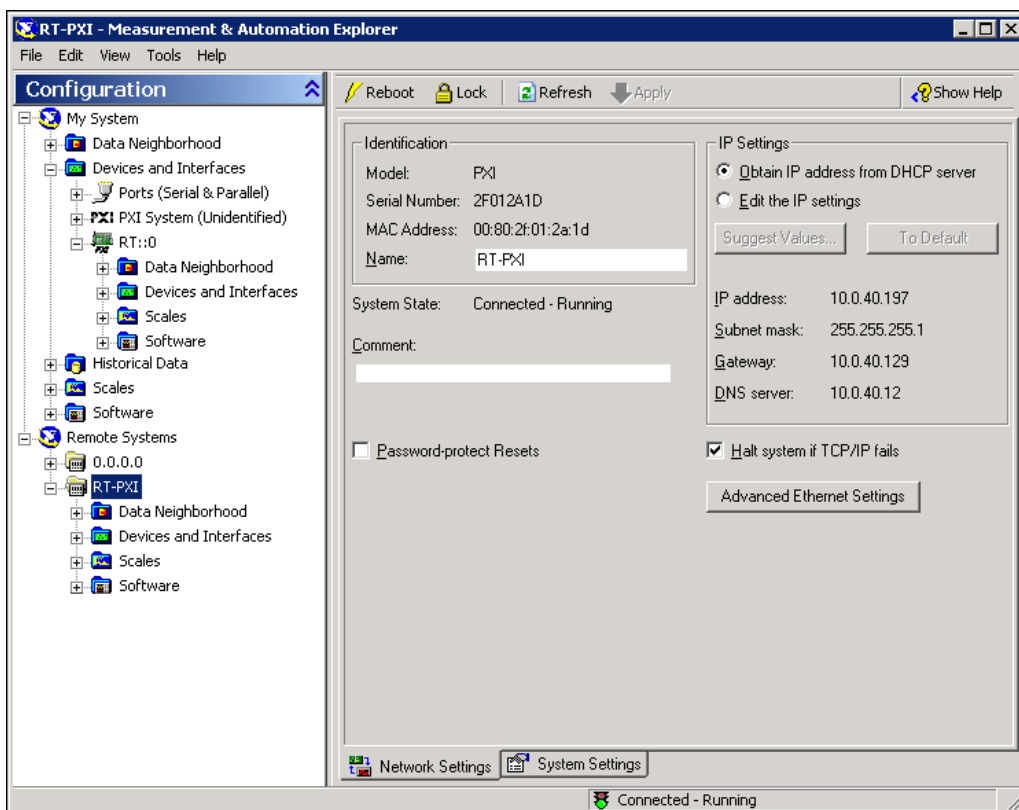


Figure 1. Configuring RT Target Network Settings

Refer to the *Remote System Configuration* book in the **Contents** of the *Measurement & Automation Explorer Help*, available from MAX by selecting **Help»MAX Help**, for information about configuring networked RT targets. Refer to the *RT Series DAQ Devices (NI PCI-7041/6040E)* topic of the *Measurement & Automation Explorer Help* for information about configuring RT Series plug-in devices. Refer to the *Using Desktop PCs as RT Targets with the LabVIEW Real-Time Module* document for information about configuring a desktop PC as a networked RT target.



Note RTX targets do not require configuration.

Refer to the following additional resources for information about configuring RT targets.

- **RT Target Configuration Procedures Page**—Refer to the National Instruments Web site at ni.com/info and enter the info code `rtconfig` to access the *RT Target Configuration Procedures* page. The *RT Target Configuration Procedures* page contains instructions for configuring specific RT targets.
- **LabVIEW Real-Time Target Configuration Tutorial**—Refer to the *LabVIEW Real-Time Target Configuration Tutorial* topic in the *Measurement & Automation Explorer Help* for a step-by-step tutorial for configuring networked RT targets.
- **Miscellaneous and Advanced Settings**—Refer to the *Configuring RT Target Settings* topic of the *LabVIEW Help* for information about configuring additional settings for an RT target.

Installing RT Target Software

Use the LabVIEW Real-Time Software Wizard in MAX to install the software and drivers from the host computer on the RT target. In MAX, expand the target, click **Software** under the target, and then click the **Add/Remove Software** button in the toolbar to launch the LabVIEW Real-Time Software Wizard.

Figure 2 shows the LabVIEW Real-Time Software Wizard with the LabVIEW Real-Time 8.0 software selected for installation on an RT target. The LabVIEW Real-Time Software Wizard displays all the National Instruments software and drivers installed on the host computer that you can install for a selected RT target.

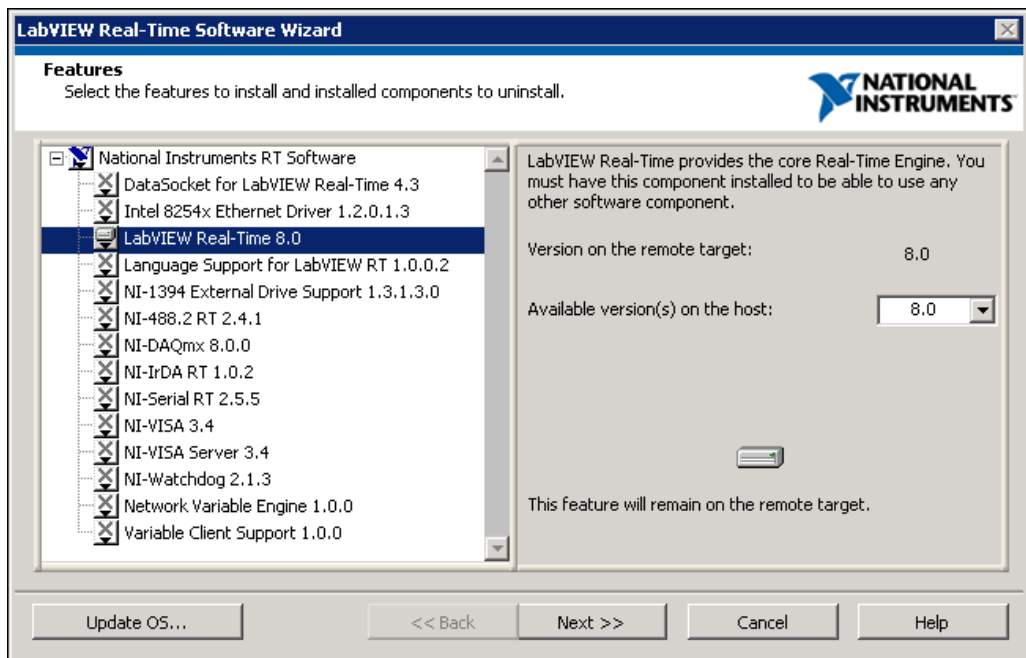


Figure 2. Installing RT Target Software and Drivers

Refer to the *Adding or Removing Software* topic of the *Measurement & Automation Explorer Help* for information about using the LabVIEW Real-Time Software Wizard to install software and drivers on an RT target. Refer to the National Instruments Web site at ni.com/info and enter the info code `rtdrivers` to access information about the driver versions supported by specific RT targets or refer to the driver documentation for the latest information about supported targets.

Exploring the LabVIEW Documentation

The Real-Time Module includes a comprehensive documentation set designed to help you create deterministic applications to run on RT targets.

LabVIEW Help

The *LabVIEW Help* contains the following information that is specific to the Real-Time Module.

- **Real-Time Module Concepts**—The *Real-Time Module Concepts* book includes information about programming concepts, application architectures, and Real-Time Module features you can use to create deterministic applications.

- **Real-Time Module How-To**—The *Real-Time Module How-To* book includes step-by-step instructions for using Real-Time Module features.
- **Real-Time VIs**—The *Real-Time VIs* book includes reference information about Real-Time Module VIs, functions, and error codes.
- **Unsupported LabVIEW Features**—The *Unsupported LabVIEW Features* book includes information about LabVIEW features that are not supported by the Real-Time Module.

Complete the following steps to access the Real-Time Module specific section of the *LabVIEW Help*.

1. Launch LabVIEW to display the **Getting Started** window shown in Figure 3.

Use the **Getting Started** window to create new VIs and real-time projects, select among the most recently opened LabVIEW files, find examples, and launch the *LabVIEW Help*.

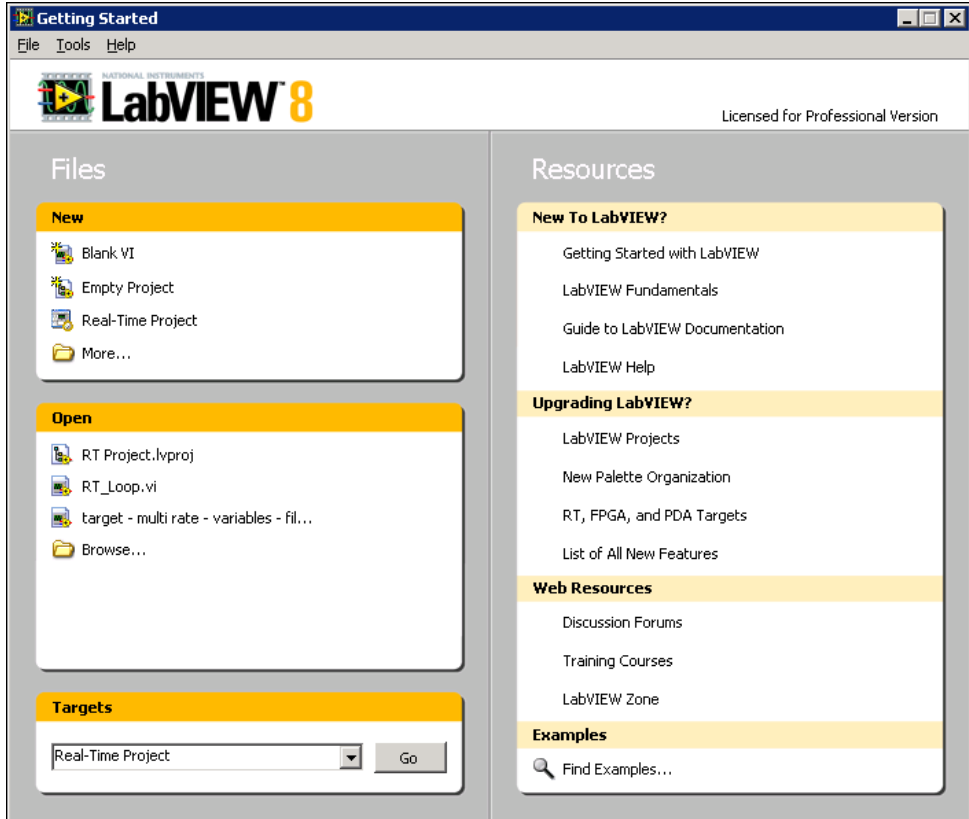


Figure 3. Getting Started Window

2. Select **Help»Search the LabVIEW Help** from the **Getting Started** window to launch the *LabVIEW Help*.
3. Expand the **Real-Time Module** book on the **Contents** tab of the *LabVIEW Help*.



Note You can search for a specific topic in the *LabVIEW Help* by clicking the **Search** tab and searching for the topic name enclosed in quotes.

LabVIEW Real-Time Module Release and Upgrade Notes

The *LabVIEW Real-Time Module Release and Upgrade Notes* contains information to help you install and configure the Real-Time Module 8.0 and a list of upgrade issues and new features.

Complete the following steps to access the *LabVIEW Real-Time Module Release and Upgrade Notes*.

1. Select **Start»All Programs»National Instruments»LabVIEW 8.0»LabVIEW Manuals** to open the `labview\manuals` directory.

The `labview\manuals` directory contains PDF versions of all the LabVIEW manuals installed on the computer. You can install the PDFs from the LabVIEW and LabVIEW Real-Time Module installation CDs.



Note You must have Adobe Reader with Search and Accessibility 5.0.5 or later installed to open the PDFs.

2. Double-click `RT_Release_Upgrade_Notes.pdf` to open the *LabVIEW Real-Time Module Release and Upgrade Notes*.
3. Browse the *Installing the Real-Time Module 8.0* section, which includes instructions for installing the Real-Time Module.
4. Browse the *New Real-Time Module 8.0 Features* section, which includes a list of new features available with version 8.0 of the Real-Time Module.

LabVIEW Real-Time Module Readme

The `readme_RT.html` file contains a list of known issues with version 8.0 of the Real-Time Module.

Complete the following steps to access the *LabVIEW Real-Time Module Readme*.

1. Select **Start»All Programs»National Instruments»LabVIEW 8.0»Readme** to open the `labview\readme` directory.

The `labview\readme` directory contains the HTML readme files for LabVIEW, the LabVIEW modules, and add-ons installed on the host computer.

2. Double-click `readme_RT.html` to open the *LabVIEW Real-Time Module Readme*.
3. Browse the *LabVIEW Real-Time Module Readme* for a list of known issues.

Creating a Real-Time Project and Application

With the Real-Time Module, you must use a LabVIEW project to build real-time applications and to work with RT targets. Use projects to group LabVIEW files and non-LabVIEW files, create real-time build specifications, and deploy files to an RT target. When you save a project, LabVIEW creates a project file (`.lvproj`), which includes references to files in the project, configuration information, build information, and deployment information.

For this tutorial, you will use the Real-Time Project Wizard to create a deterministic application that simulates data acquisition, logs data to disk on the RT target, and then displays the data in a chart on the host computer. The application consists of two VIs—an RT target VI that runs on the target and simulates the deterministic data acquisition and logging and a host VI that runs on the host computer to provide the user interface.



You can complete the exercises in this section in approximately 35 minutes.

Creating a Project Using the Real-Time Project Wizard

Use the Real-Time Project Wizard to create a new project that defines RT targets and includes VIs and other application files. You can create projects using one of three architectures with the Real-Time Project Wizard—continuous communication, state machine, or custom.

- **Continuous communication architecture**—Use a continuous communication architecture to create data acquisition applications that log data to disk and continuously communicate with a host computer or to create applications that perform continuous deterministic tasks.
- **State machine architecture**—Use a state machine architecture to implement complex decision-making algorithms represented by state diagrams or flow charts. The state machine architecture implements any algorithm described by a Moore machine. A Moore machine performs a specific action for each state in a state diagram.
- **Custom project**—Use a custom project architecture to add a blank VI or import existing VIs to run on the host computer or RT target.

Refer to the *LabVIEW Help* for more information about using the Real-Time Project Wizard and for more information about the available real-time architectures.

Complete the following steps to create a new project using the Real-Time Project Wizard.

1. Click the **Real-Time Project** link in the **New** section of the **Getting Started** window or select **Tools»Real-Time Module»Project Wizard** to launch the Real-Time Project Wizard.
2. Select **Continuous communication architecture** from the **Project type** pull-down menu.

The Real-Time Project Wizard displays a diagram in the right pane that represents the architecture you select, as shown in Figure 4.

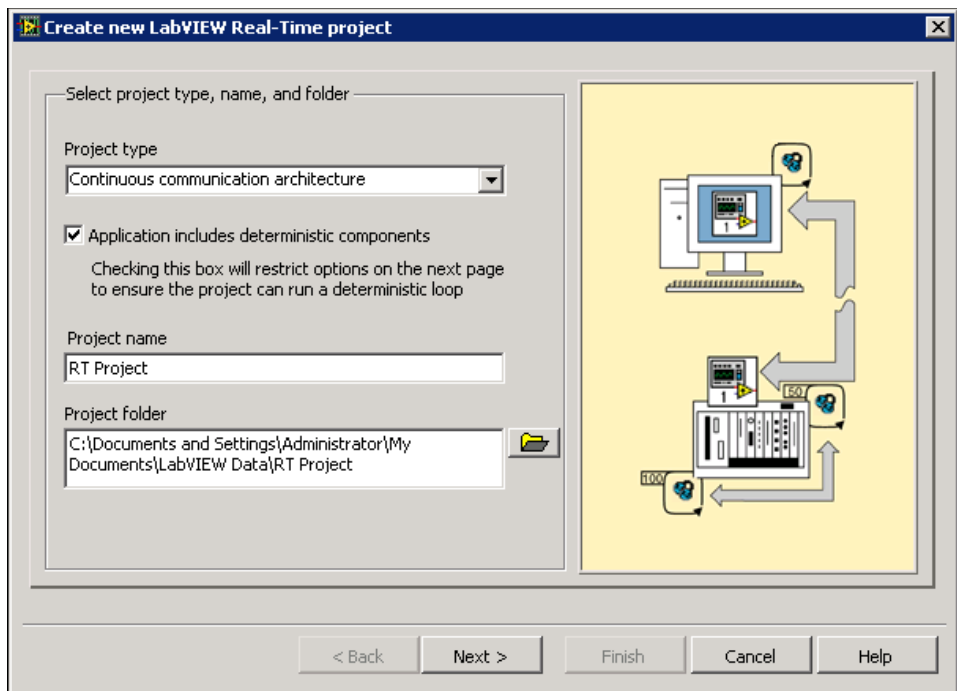


Figure 4. Selecting a Project Type

3. Place a checkmark in the **Application includes deterministic components** checkbox. When you enable this option, the Real-Time Project Wizard restricts the configuration options of the project to ensure the application can run deterministically.
4. Enter `RT Project` in the **Project name** text box.

5. Specify the directory where you want to save the project files on the host computer in the **Project folder** text box or click the **Browse** button to browse to the directory in the file system.
6. Click the **Next** button to accept the settings and continue.

Selecting the RT Target and Host Computer Configuration for the Application

Use the **Customize architecture options** section of the Real-Time Project Wizard to specify the options for the VIs in the application. For the continuous communication architecture, the Real-Time Project Wizard creates a VI that runs on an RT target and contains LabVIEW Timed Loops and shared variables that control time-critical tasks, the user interface, and file I/O.

A Timed Loop executes a subdiagram each iteration of the loop at a period that you specify. Timed Loops use a timing source to control the timing and execution of the subdiagram. Refer to the *LabVIEW Help* for information about using the Timed Loop and other timed structures.

Shared variables are configured software items that can share data between locations in a VI that cannot be connected with wires, between VIs running on an RT target, and between VIs across a network running on different targets. After you create a shared variable, you can access the shared variable data from VIs using a Shared Variable node. A Shared Variable node is a block diagram object that references a shared variable. Use a Shared Variable node to read and write values to a shared variable.

The Real-Time Module adds a real-time FIFO—first in, first out buffer—to the shared variable. If you enable the real-time FIFO of a shared variable, you can deterministically share live data without affecting the determinism of VIs on an RT target. Refer to the *LabVIEW Help* for more information about sharing data deterministically using shared variables.

With the continuous communication architecture, you can select an application configuration that uses one or two Timed Loops in the RT target VI.

- **One loop**—The RT target VI uses a Timed Loop to control the timing and execution of the application tasks.
- **Two loops**—The RT target VI uses two Timed Loops running at different priorities to control the timing and execution of the application tasks. The higher priority Timed Loop controls the time-critical tasks. The lower priority Timed Loop controls user interface communication and file I/O tasks.

The Real-Time Project Wizard can provide a user interface for the real-time application using a VI running on the host computer or using a LabVIEW remote panel to connect to the RT target VI.

- **Host VI**—Uses LabVIEW shared variables to send user interface data out of the RT target VI. A VI that runs on the host computer accesses the user interface data and displays the data on a front panel.
- **Remote Panel**—Uses a LabVIEW remote panel to view the front panel controls and indicators of the RT target VI. You cannot use remote panels with a single Timed Loop configuration if the application requires determinism.

Complete the following steps to configure the RT target VI with two Timed Loops and a host VI user interface using the Real-Time Project Wizard.

1. Select **Two loops**, as shown in Figure 5, to create an RT target VI with two Timed Loops.

The Real-Time Project Wizard adds shared variables to the RT target VI for sending data out of the higher priority Timed Loop that controls time-critical tasks.

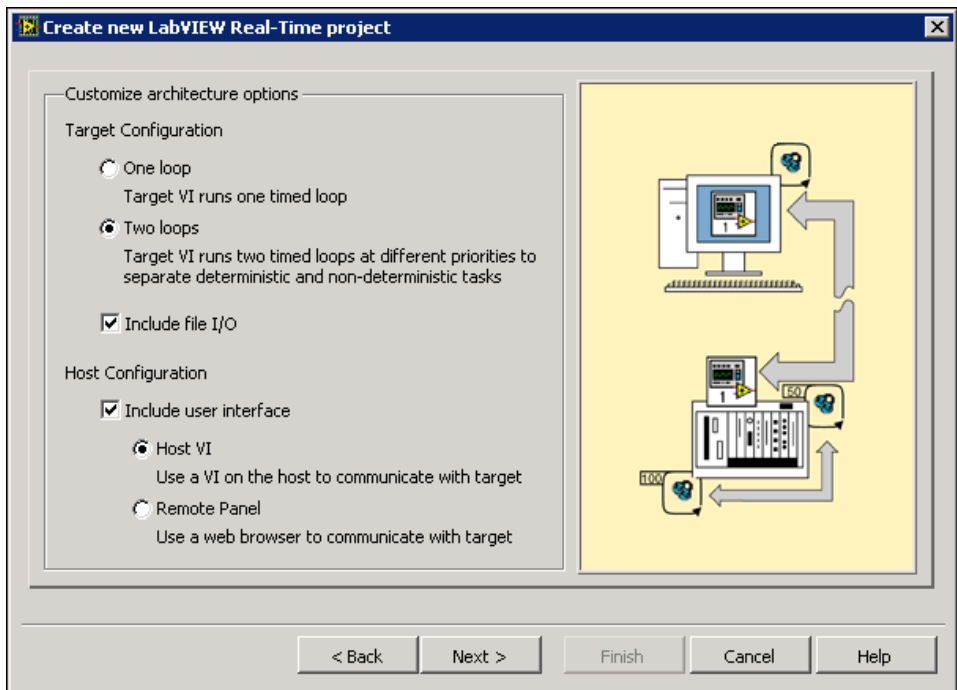


Figure 5. Configuring the Architecture Options

2. Place a checkmark in the **Include file I/O** checkbox to log the data acquired in the time-critical loop of the RT target VI to a file on the RT target.

When you enable the **Include file I/O** option, the higher priority Timed Loop sends the acquired data to the lower priority Timed Loop using shared variables. The lower priority Timed Loop saves the data to a file on the RT target.
3. Place a checkmark in the **Include user interface** checkbox to configure the real-time application to send user interface data to the VI on the host computer.
4. Select **Host VI** to create a VI that runs on the host computer and displays a front panel for the real-time application.
5. Click the **Next** button to accept the settings and continue.

Adding an RT Target to the Project

Use **Browse targets** section of the Real-Time Project Wizard to add an RT target to the project. The RT targets you add to a project execute the RT target VIs in the project. You can add a networked or local RT target previously configured in MAX.

- **Networked**—RT targets that connect directly to a network using an Ethernet connection, such as RT Series PXI devices.
- **Local**—RT targets that you install locally on the host computer and communicate with using the network connection of the host computer, such as RT Series plug-in devices.

Complete the following steps to add an RT target to the project using the Real-Time Project Wizard.

1. Select the type of RT target that you configured in the *Installing and Configuring the Real-Time Module* section.
2. Click the **Browse** button to open the **Add Targets and Devices** dialog box. Use the **Add Targets and Devices** dialog box to select the previously configured RT target.

The **Selected target** text box displays the name of the RT target you selected.
3. Click the **Next** button to accept the settings and continue. The Real-Time Project Wizard displays a preview of the project and the application that you configured. The preview displays the host computer, RT target, and VIs as they appear in a project. The next section of this tutorial explains the project layout and explores the application VIs.

You can place a checkmark in the **Open VIs when finished** checkbox to open all project VIs after the Real-Time Project Wizard creates the project, application, and support files.

4. Click the **Finish** button to exit the Real-Time Project Wizard and generate the new project, VIs, and support files for the real-time application. The **Project Explorer** window displays the new project that you create.

You can use the projects that you create with the Real-Time Project Wizard as a starting point for your application. You also can manually create projects and add RT targets and VIs to the project in LabVIEW. Refer to the *Using LabVIEW Projects with the Real-Time Module* topic of the *LabVIEW Help* for information about manually creating and editing projects for the Real-Time Module.

Exploring the Project and Application in the Project Explorer Window

The **Project Explorer** window enables you to manage the RT targets, VIs, and other support files of a project from one location.

The **Project Explorer** window includes the following sections.

- **Project root**—Contains the host computer and the RT targets assigned to the current project.
 - **My Computer**—Represents the host computer as a target in the project.
 - **RT Target**—Represents the RT targets in the project. By default, the heading for an RT target is the name of the target as it appears in MAX.

VIs and libraries that you add to an RT target appear under the target in the **Project Explorer** window. A VI appears under a target to indicate that you can run the VI on the particular target. Figure 6 shows the project, `RT Project.lvproj`, that you created with the Real-Time Project Wizard.

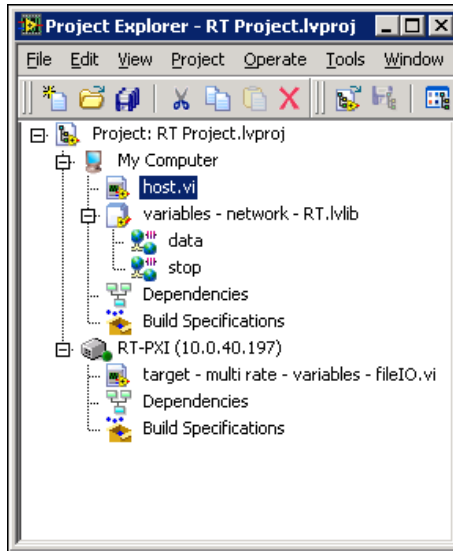


Figure 6. Exploring the Real-Time Project and Application in the Project Explorer Window

You can see the RT target VI, `target - multi rate - variables - fileIO.vi`, listed under **RT-PXI**. Under **My Computer**, the project contains the user interface VI, `host.vi`, and a project library, `variables - network - RT.lvlib`, that contains the shared variables created for communication with this VI. You can use a project library to set access and edit permissions for shared variables. Refer to the *LabVIEW Help* for more information about using project libraries.

Complete the following steps to explore the shared variables and VIs for the project you created with the Real-Time Project Wizard.

1. In the **Project Explorer** window, double-click the `data` shared variable, located under the `variables - network - RT.lvlib` project library of **My Computer**, to open the **Shared Variable Properties** dialog box.

The **Shared Variable Properties** dialog box defines the variable type and other settings for a shared variable. Use the **Shared Variable Properties** dialog box to edit an existing shared variable or to create a new shared variable. You can create new shared variables by right-clicking **My Computer** or an RT target in the **Project Explorer** window and selecting **New»Variable** from the shortcut menu to open the **Shared Variable Properties** dialog box. Refer to the *LabVIEW Help* for more information about creating a shared variable.

2. Click **Real-Time FIFO** in the **Category** list to display the **Real-Time FIFO** page. Use the **Real-Time FIFO** page to define the real-time FIFO of a shared variable with which you can share data

5. Double-click the `host.vi` under **My Computer** and then press the <Ctrl-E> keys to open the block diagram.

The `host.vi` contains a While Loop that reads from the shared variable, `data`, and publishes the data to a waveform chart on the front panel, as shown in Figure 8. The `host.vi` contains a Shared Variable node that writes to the shared variable, `stop`, allowing you to control the RT target VI from the host computer.

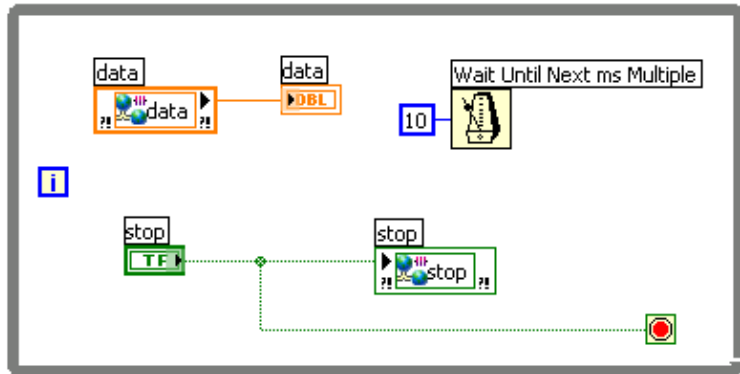


Figure 8. Host VI for User Interface

6. Notice that the RT target in the **Project Explorer** window also includes **Dependencies** and **Build Specifications**.

Use **Dependencies** to view items or subVIs that VIs under the RT target require to execute. Refer to the *LabVIEW Help* for more information about viewing dependencies in a project.

Use **Build Specifications** to create and manage stand-alone real-time applications. Refer to the [Building a Stand-Alone Real-Time Application](#) section for more information about using **Build Specifications** to create stand-alone real-time applications.

Configuring RT Target Properties

Use the RT target **Properties** dialog box to configure the project settings of an RT target. You can configure general, VI Server, Web Server, access, and miscellaneous target settings. For example, you can enable the VI Server on the RT target, as explained in this section.



You can complete the exercises in this section in approximately 10 minutes.

Complete the following step to enable the VI Server on the RT target.

1. Right-click the RT target in the **Project Explorer** window and select **Properties** from the shortcut menu to open the RT target **Properties** dialog box.
2. Select **VI Server: Configuration** from the **Category** list to display the **VI Server: Configuration** page.
3. Place a checkmark in the **TCP/IP** checkbox to enable the VI Server on the RT target.
4. Enable all the options in the **Accessible Server Resources** section to allow VI and application calls on the RT target. Enabling VI and application calls on the RT target allows you to remotely launch VIs that are in memory on the target.
5. Click the **OK** button to accept the settings and close the RT target **Properties** dialog box.
6. Save the project, by selecting **Project»Save Project** from the **Project Explorer** window, to save the settings you selected for the RT target in the RT target **Properties** dialog box. You must deploy the RT target before the settings take effect. Deploying an RT target refers to applying settings defined in the project to a target.



Note Deploying an RT target overwrites the current target settings with the latest settings specified in the RT target **Properties** dialog box.

7. Right-click the RT target and select **Deploy** from the shortcut menu to deploy the settings to the target.

Deploying and Running VIs on the RT Target

In addition to referring to applying properties to an RT target, deploy also refers to downloading VIs and dependent files to an RT target. You can deploy VIs, libraries, and shared variables to an RT target where you can run or reference the items.



You can complete the exercises in this section in approximately 10 minutes.

Complete the following steps to deploy and run the real-time application you previously created on the RT target and host computer.

1. Right-click the `target - multi rate - variables - fileIO.vi` under the RT target in the **Project Explorer** window and select **Deploy** from the shortcut menu to download the VI to the RT target.

LabVIEW deploys the VI to the RT target and opens the front panel to indicate that the VI is in memory on the RT target. Closing the front panel removes the VI from memory on the RT target.

2. Click the **Run** button on the front panel to run the VI on the target.
3. Right-click the RT target in the **Project Explorer** window and select **Disconnect** from the shortcut menu to close the front panel connection with the target while leaving the VI running.
4. Double-click the `host.vi` under **My Computer** in the **Project Explorer** window to open the VI and then click the **Run** button on the front panel to run the VI on the host computer.

The `host.vi` displays a waveform chart with the data received from the RT target.

5. Click the **Stop** button to stop the execution of the Timed Loops in the RT target VI, which stops the execution of the VI.

Building a Stand-Alone Real-Time Application

Use the LabVIEW Application Builder with the Real-Time Module to create stand-alone real-time applications. Stand-alone real-time applications do not require you to run them from within a LabVIEW environment. You can embed a stand-alone real-time application on an RT target and have the application launch automatically when you power on the target. Use the Application Builder to create a build specification that defines how you want to build a stand-alone real-time application.



You can complete the exercises in this section in approximately 20 minutes.

Creating a Real-Time Build Specification

A build specification defines the VIs, support files, and settings for stand-alone real-time applications. You must create a build specification for and then use the build specification to build the stand-alone real-time application.

Complete the following steps to create a build specification.

1. Right-click **Build Specifications** under the RT target in the **Project Explorer** window and select **New»Real-Time Application** from the

shortcut menu to open the **Real-Time Application Properties** dialog box.

2. Enter Real-Time Application in the **Build specification name** text box. The build specification name appears under **Build Specifications** for the RT target.
3. Enter `rtapp.rtexe` in the **Executable filename** text box to set the file name for the stand-alone real-time application executable on the RT target. By default, the **Executable filename** text box contains `startup.rtexe`.
4. Click **Source Files** from the **Category** list to display the **Source Files** page.
5. From the **Project Files** tree, select the `target - multi rate - variables - fileIO.vi`, located under the RT target, and click the right arrow button next to the **Startup VIs** listbox to move the VI into the **Startup VIs** listbox. VIs in the **Startup VIs** listbox execute when you launch the stand-alone real-time application.
6. Click the **OK** button to accept the settings and close the **Real-Time Application Properties** dialog box. The build specification name appears in the **Project Explorer** window under **Build Specifications** for the RT target, as shown in Figure 9.

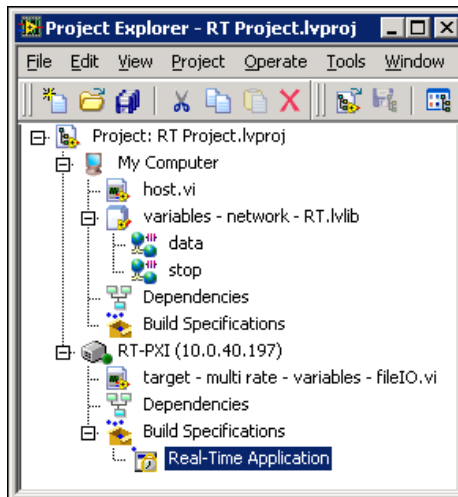


Figure 9. Creating a Build Specification

7. Select **Project>Save Project** from the **Project Explorer** window to save the project and the build specification settings.

Editing a Real-Time Build Specification

You can edit the settings of a build specification using the **Real-Time Application Properties** dialog box. However, if you make changes to a build specification, you must save the project to save the build specification changes.

Complete the following steps to edit the build specification you created in the previous section.

1. From the **Project Explorer** window, right-click the real-time build specification under **Build Specifications** for the RT target and select **Properties** from the shortcut menu to open the **Real-Time Application Properties** dialog box.
2. Click **Advanced** from the **Category** list to display the **Advanced** page.
3. Place a checkmark in the **Enable debugging** checkbox. The **Enable debugging** option allows you to remotely debug the stand-alone real-time application generated with the build specification.
4. Click the **OK** button to accept the settings and close the **Real-Time Application Properties** dialog box.
5. Select **Project»Save Project** from the **Project Explorer** window to save the build specification settings to the project.

Building and Deploying a Stand-Alone Real-Time Application

After creating a build specification, you can build and deploy a stand-alone real-time application to an RT target. You can set the stand-alone real-time application to launch when you power on the RT target.

Complete the following steps to build and deploy a stand-alone real-time application to an RT target.

1. From the **Project Explorer** window, right-click the build specification and select **Set as startup** from the shortcut menu. Setting a build specification as startup enables the stand-alone real-time application generated from the build specification to launch automatically when you power on the RT target.



Note When you set a build specification as the startup application, LabVIEW displays the build specification with a green border around the specification icon in the **Project Explorer** window.

2. Right-click the build specification and select **Build** from the shortcut menu to build the stand-alone real-time application. The Application Builder builds the stand-alone real-time application configured with the settings you defined in the build specification.

3. Right-click the build specification and select **Deploy** from the shortcut menu to deploy the stand-alone real-time application to the RT target.
4. Right-click the RT target in the **Project Explorer** window and select **Utilities»Reboot** from the shortcut menu to reboot the target and launch the stand-alone real-time application.
5. From the **Project Explorer** window, open and run the `host.vi` under **My Computer** to display a chart with the data acquired and sent from the stand-alone real-time application.
6. Right-click the build-specification and select **Unset as startup** to disable the stand-alone real-time application from launching when you power on the RT target.
7. Right-click the build specification and select **Deploy** from the shortcut menu to deploy the changes to the RT target and then reboot the target.

Monitoring RT Target Resources and Errors

The Real-Time Module provides utilities to monitor RT target resources and view target errors.



You can complete the exercises in this section in approximately 10 minutes.

Monitoring RT Target Resources

The Real-Time System Manager displays details about VIs running on an RT target and provides a dynamic display of the target resources, such as the memory and CPU. You also can stop and start VIs that are in memory on the RT target and log alerts when the use of a resource exceeds a level you specify.



Note You must enable the VI Server on the target to use the Real-Time System Manager to monitor the target. Refer to the [Configuring RT Target Properties](#) section for information about enabling the VI Server on the RT target.

Complete the following steps to open the Real-Time System Manager and view the RT target resources.

1. Deploy and run the RT target VI you previously created, `target - multi rate - variables - fileIO.vi`, on the target.
2. From the **Project Explorer** window, select **Tools»Real-Time Module»System Manager** to launch the Real-Time System Manager.
3. Select the RT target from the **Machine Name/IP Address** pull-down menu.
4. Click the **Start Monitoring** button to connect to the selected RT target.

- Click the **VI**s, **Resources**, and **Alerts** tabs to display the VIs in memory, to view target resources, and to set and view alerts for the RT target.

Figure 10 shows an RT target, RT-PXI, using 6.63% of its CPU resources and 14,033.4 K of its memory resources.

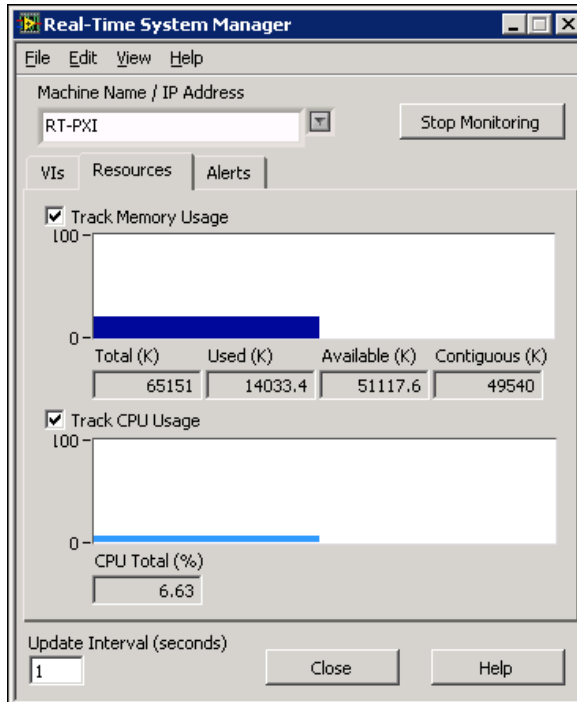


Figure 10. Displaying Target Resources Using the Real-Time System Manager

- Click the **Close** button to close the Real-Time System Manager.
- Close the front panel to remove the VI from memory on the RT target.

Refer to the *LabVIEW Help* for information about using the Real-Time System Manager to monitor RT targets.

Viewing RT Target Errors

The **RT Target Errors** dialog box displays the error logs saved for all sessions of an RT target. An RT session begins when you power on an RT target and ends when you reboot the target. The **RT Target Errors** dialog box displays LabVIEW errors, real-time operating system errors, and crash logs for each session of an RT target. You also can create an error report and save the report to disk on the host computer using the **RT Target Errors** dialog box.

Complete the following step to view the errors logs for a session of an RT target and create a report of the session.

1. Right-click the RT target in the **Project Explorer** window and select **Utilities»View Error Log** from the shortcut menu to open the **RT Target Errors** dialog box.
2. Select the current session in the **LabVIEW RT sessions** listbox to display the error logs for the target. You can use the logs to debug errors or crashes that occur when running a VI on an RT target.
3. Click the **Create Report** button and browse to the directory on the host computer where you want to save the report.
4. Enter a filename in the **File name** text box and click the **OK** button to save the report.

The **RT Target Errors** dialog box saves the report as a text file that contains the information displayed for the selected session.

Debugging RT Target VIs and Stand-Alone Applications

You can use LabVIEW tools and utilities to debug RT target VIs and stand-alone real-time applications (.rtexe) that are in memory on an RT target.



You can complete the exercises in this section in approximately 15 minutes.

Debugging RT Target VIs

You can open a front panel connection with an RT target and use the LabVIEW debugging tools to debug the VIs running on the target.

Complete the following steps to open a front panel connection with VIs running on an RT target and to debug the VIs from the host computer.

1. Deploy and run the RT target VI you previously created, `target - multi rate - variables - fileIO.vi`, on the RT target.
2. Use the LabVIEW debugging tools, such as execution highlighting and single-stepping, while the host computer is connected to an RT target to step through LabVIEW code. Refer to the *LabVIEW Help* for information about using the LabVIEW debugging tools to debug VIs.
3. Close the front panel to remove the VI from memory on the RT target.
4. Right-click the RT target in the **Project Explorer** window and select **Disconnect** from the shortcut menu to close the front panel connection.

Debugging Stand-Alone Real-Time Applications

Use the **Debug Application or Shared Library** dialog box to debug stand-alone real-time applications running on an RT target.



Note You must enable debugging for the stand-alone real-time application to connect to the application using the **Debug Application or Shared Library** dialog box. Refer to the [Editing a Real-Time Build Specification](#) section for information about enabling debugging for a stand-alone real-time application.

Complete the following steps to connect to a stand-alone real-time application running on an RT target.

1. Deploy and launch as startup the stand-alone real-time application you previously created, *Real-Time Application*, on the RT target.
2. From the **Project Explorer** window, select **Operate»Debug Application or Shared Library** to open the **Debug Application or Shared Library** dialog box.
3. Enter the IP address or name of the RT target in the **Machine name or IP address** text box.
4. Click the **Refresh** button to view the list of stand-alone real-time applications that are in memory on the RT target.
5. Select `rtapp.rtexe` from the **Application or shared library** pull-down menu and click the **Connect** button to connect to the stand-alone real-time application.

LabVIEW opens the block diagram of the startup VI for debugging. You can use probes, breakpoints, and other LabVIEW debugging techniques on the block diagram to identify errors in the application.

6. Close the block diagram of the startup VI and the **Debug Application or Shared Library** dialog box.
7. Disable the stand-alone real-time application to launch when you power on the RT target and then deploy the build specification to apply the changes to the startup property.
8. Reboot the RT target.

Summary

The following topics are a summary of the main concepts you learned in this tutorial.

Installing the Real-Time Module and Configuring RT Targets

You must complete three steps to set up a LabVIEW Real-Time Module system.

1. Install software on the host computer—Install LabVIEW, the Real-Time Module, and the National Instruments device drivers on a host computer. Refer to the *LabVIEW Release Notes* for the LabVIEW installation instructions. Refer to the *LabVIEW Real-Time Module Release and Upgrade Notes* for the Real-Time Module and device driver installation instructions.
2. Configure the RT target settings—Use MAX to configure the settings of an RT target.
3. Install software on the RT target—Use the LabVIEW Real-Time Software Wizard in MAX to install the Real-Time Module software and device drivers on an RT target.

Using the Real-Time Project Wizard to Create Real-Time Projects

With the Real-Time Module, you must use a LabVIEW project to build real-time applications and to work with RT targets. Use the Real-Time Project Wizard to create a real-time project that defines RT targets and includes VIs and other application files. Click the **Real-Time Project** link in the **New** section of the **Getting Started** window or select **Tools» Real-Time Module» Project Wizard** to launch the Real-Time Project Wizard.

You also can manually create projects and add RT targets and VIs to the project in LabVIEW. Refer to the *Using LabVIEW Projects with the Real-Time Module* topic of the *LabVIEW Help* for information about manually creating and editing projects for the Real-Time Module.

Using the Project Explorer Window to Manage and Configure Projects

The **Project Explorer** window enables you to manage the RT targets, VIs, and other support files of a project from one location.

- **Configure RT Target Properties**—Use the RT target **Properties** dialog box to configure the project settings of an RT target. Right-click the RT target in the **Project Explorer** window and select **Properties** from the shortcut menu to open the RT target **Properties** dialog box.

- **Deploy and Run VIs**—From the **Project Explorer** window, you can deploy VIs, libraries, and shared variables to an RT target where you can run or reference the items. Right-click the VI under the RT target and select **Deploy** from the shortcut menu to deploy the VI to the target. Click the **Run** button on the front panel to run the deployed VI on the RT target.

Using the LabVIEW Application Builder to Create Stand-Alone Real-Time Applications

Use the Application Builder to create a build specification that you can use to build a stand-alone real-time application. A build specification defines the VIs, support files, and settings for stand-alone real-time applications.

- **Create a Build Specification**—Right-click **Build Specifications** under the RT target in the **Project Explorer** window and select **New»Real-Time Application** from the shortcut menu to create a new build specification. You also can use the build specification to define the stand-alone real-time application to launch when you power on the RT target. Right-click the build specification in the **Project Explorer** window and select **Set as startup** from the shortcut menu to set the stand-alone real-time application to launch when you power on the RT target.
- **Build and Deploy a Stand-Alone Real-Time Application**—Right-click the build specification and select **Build** from the shortcut menu to build the stand-alone real-time application. You then can deploy the stand-alone real-time application to the RT target from the **Project Explorer** window by right-clicking the build specification and selecting **Deploy** from the shortcut menu.

Using the Real-Time System Manager to Manage RT Target Resources

The Real-Time System Manager displays details about VIs running on an RT target and provides a dynamic display of the target resources, such as the memory and CPU. From the **Project Explorer** window, select **Tools»Real-Time Module»System Manager** to launch the Real-Time System Manager.

Using the RT Target Errors Dialog Box to View RT Target Error Logs

The **RT Target Errors** dialog box displays LabVIEW errors, real-time operating system errors, and crash logs for each session of an RT target. Right-click an RT target in the **Project Explorer** window and select **Utilities»View Error Log** from the shortcut menu to open the **RT Target Errors** dialog box.

Debugging RT Target VIs and Stand-Alone Applications

- **Debug RT Target VIs**—You can open a front panel connection with an RT target and use the LabVIEW debugging tools to debug the VIs running on the target. Right-click the RT target in the **Project Explorer** window and select **Connect** from the shortcut menu to open a front panel connection with the target. Right-click the RT target in the **Project Explorer** window and select **Disconnect** from the shortcut menu to close the front panel connection.
- **Debug Stand-Alone Real-Time Applications**—Use the **Debug Application or Shared Library** dialog box to debug stand-alone real-time applications running on an RT target. From the **Project Explorer** window, select **Operate»Debug Application or Shared Library** to open the **Debug Application or Shared Library** dialog box.

Where to Go from Here

Now that you have completed this introductory tutorial, you can refer to the following resources for additional information about the LabVIEW Real-Time Module.

Real-Time Module Concepts

The *Real-Time Module Concepts* book of the *LabVIEW Help* includes conceptual information about real-time programming techniques, application architectures, and Real-Time Module features you can use to create real-time applications. Refer to the Real-Time Module concepts before attempting to create a deterministic real-time application.

Real-Time Module Examples

Use the NI Example Finder, available by selecting **Help»Find Examples** from LabVIEW, to browse or search for example VIs. You also can access the example VIs from the `examples\Real-Time` directory. The Real-Time Module includes examples of multithreaded communication, network communication, and shared memory access.

National Instruments, NI, ni.com, and LabVIEW are trademarks of National Instruments Corporation. Refer to the *Terms of Use* section on ni.com/legal for more information about National Instruments trademarks. Other product and company names mentioned herein are trademarks or trade names of their respective companies. For patents covering National Instruments products, refer to the appropriate location: **Help»Patents** in your software, the `patents.txt` file on your CD, or ni.com/patents.