

Features

- **Megapixel Resolution:** 1300 (H) x 1030 (V) x 12 bits
- **Fast Readout:** 20.25 MSPS
- **High Sensitivity:** 0.003 fc for full video at 12f/sec
- **Long Term Exposure:** Up to 15 min
- **High Signal / Noise Ratio:** >65 dB
- **Selectable Binning Modes:** 1x2, 2x2, 4x4, 8x8
- **Progressive Scan:** 12 or 24 f/sec.
- **C-View™:** Image Capture and Control Software
- **Asynchronous Reset:** with fast shutter SNAPSHOT mode
- **Ultra-stable in-camera Digitization**
- **Precision Opto-mechanical Mount**
- **Optional TE Cooler:** -20° C
- **No Mechanical Shutter required**
- **CE/UL/CUL/FCC Certified**

**Additional Information
Available at:**
www.dvcco.com

Description

The DVC-1312 is a high resolution, high sensitivity digital camera utilizing a unique megapixel 2/3" progressive scan interline CCD sensor. The CCD sensor has a particularly high QE in the Blue-Green spectrum resulting in higher sensitivity for most applications.

The compact and lightweight design is particularly well suited for coupling to precision optical instruments. The highly stable optical mount utilizes an adjustable C-mount coupling to provide critical system focusing adjustments.

The camera is supplied with the all new **C-View™**, a PC based software program for real-time viewing and image capture. **C-View™** includes an integrated camera control panel which encompasses all camera control functions including 5 user programmable, single-click application controls, plus TWAIN and Image Pro® drivers to facilitate ease-of-use with popular imaging programs. The camera output and controls are interfaced to a frame grabber within a computer via a single multipinned cable, which provides simple and reliable operation.



DVC-1312

Precision Megapixel Digital Camera

Specifications

Specification	DVC-1312
Sensor:	2/3" progressive scan interline CCD
Active picture elements	1300 (H) x 1030 (V)
Pick up area	8.71 mm x 6.90 mm (2/3" format)
Picture element size	6.7 μ m x 6.7 μ m (square format)
Aspect ratio	5:4
Digital Video output:	12 Bit RS-422/RS-644 (LVDS)
Readout Rate	20 MHz, 10 MHz, 5 MHz, 2.5 MHz (user selectable via software)
Resolution/Frame Rate (Binning)	1300 x 1030 at 12 f/s (1x1) 1300 x 515 at 24 f/s (1x2) 650 x 515 at 24 f/s (2x2) 325 x 257 at 41 f/s (4x4) 162 x 128 at 65 f/s (8x8)
Signal to noise	>65 dB, at min. gain
Sensitivity (light required for full scale output)	0.05fc@0dB gain, 12 f/sec 0.003fc@max gain, 12 f/sec 0.0007fc@0dB gain, 10 sec exposure
Gamma	1.0 (linear)

Camera Control:

RS-232C, **C-View™** Interface Software module, standard

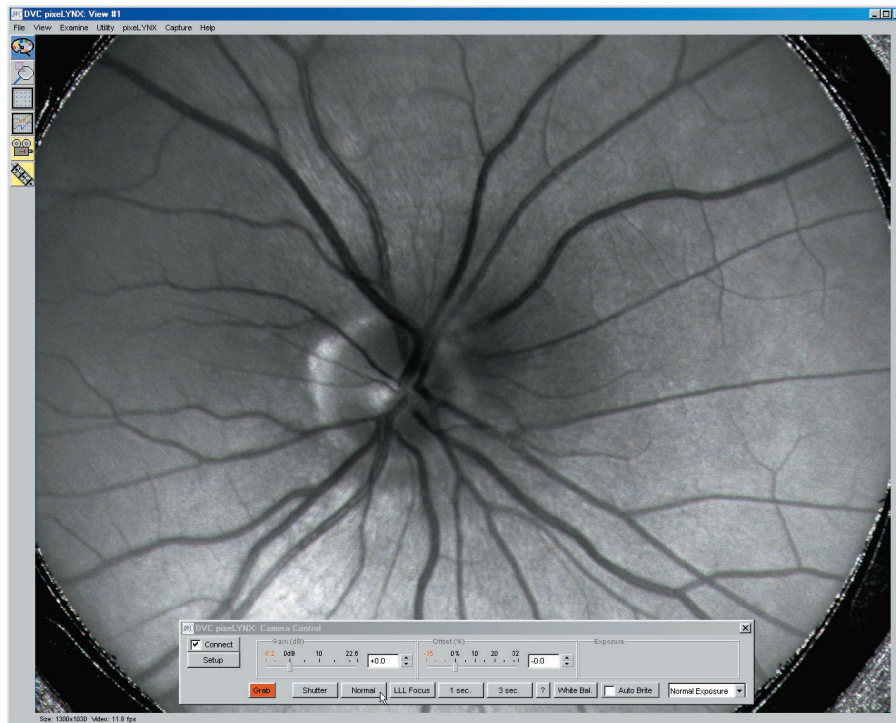
Gain control	30 dB
Offset control (black)	-16% to +34%
High speed shutter	80 μ s to 83.33 ms
Integration control	83.33 ms to 15 min.

Electrical:

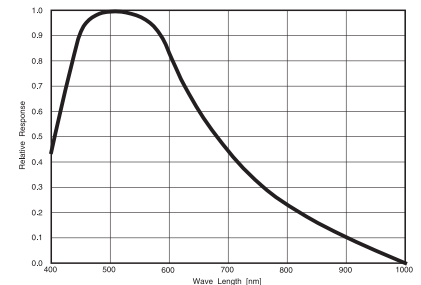
Input voltage	110/220 VAC 50/60 Hz
Power	10 Watts
Clock	Internal crystal @ 80 MHz

Mechanical:

Size	3.25" H x 3.25" W x 1.75" L
Weight (without lens)	14 ozs. (400 grams)
Lens mount	Standard C-mount
Camera mount	1/4"x 20 Standard tripod mount
Camera connector	DB-44F
Power connector	DB-9M



C-View™ Viewer and Camera Control Panel



CCD Spectral Response (without IR filter)

