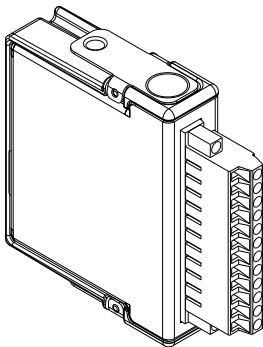


## GETTING STARTED GUIDE

# NI 9326

6-Channel, 150 V, 128 kHz C Series Frequency  
Input Module



This document explains how to connect to the NI 9326.



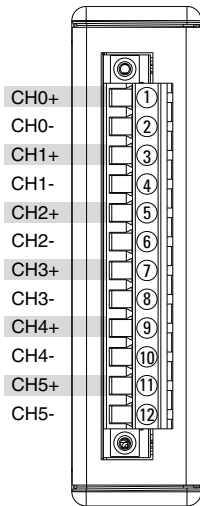
**Note** Before you begin, read the *NI 9326 Safety, Environmental, and Regulatory Information* document on [ni.com/manuals](http://ni.com/manuals) and complete the software and hardware installation procedures in your chassis documentation.



**Note** The guidelines in this document are specific to the NI 9326. The other components in the system might not meet the same safety ratings. Refer to the documentation for each component in the system to determine the safety and EMC ratings for the entire system.

# NI 9326 Pinout

---

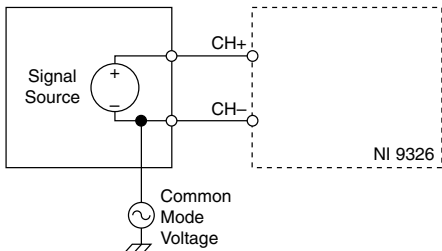


**Table 1.** Signal Descriptions

Signal	Description
CH+	Positive input signal connection
CH-	Negative input signal connection

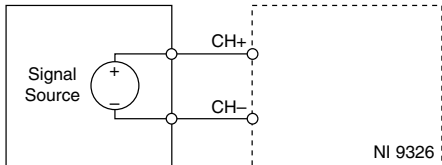
## Grounded Differential Connections

---



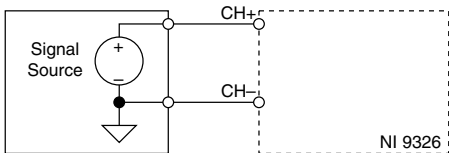
## Floating Differential Connections

---



## Single-Ended Connections

---



## NI 9326 Connection Guidelines

---

- Make sure that devices you connect to the NI 9326 are compatible with the module specifications.

### High-Vibration Application Connections

If your application is subject to high vibration, NI recommends that you follow these guidelines to protect connections to the NI 9326:

- Use ferrules to terminate wires to the detachable connector.
- Use the NI 9929 connector backshell kit.

### Overvoltage Protection

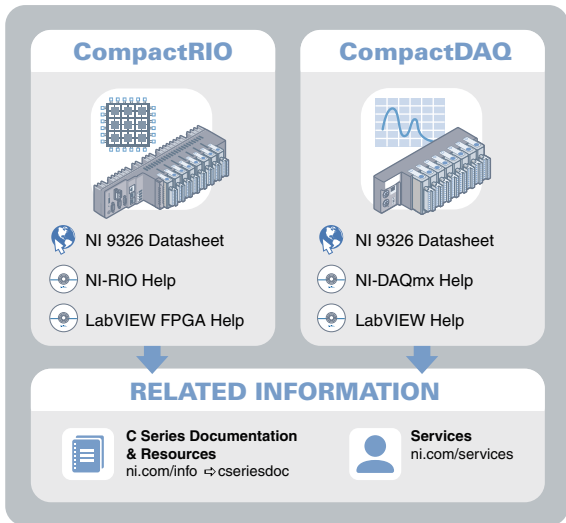
The NI 9326 provides overvoltage protection for each channel.



**Note** Refer to the device datasheet on [ni.com/manuals](https://ni.com/manuals) for more information about overvoltage protection.

# Where to Go Next

---



Located at [ni.com/manuals](http://ni.com/manuals)



Installs with the software

## Worldwide Support and Services

---

The NI website is your complete resource for technical support. At [ni.com/support](https://ni.com/support), you have access to everything from troubleshooting and application development self-help resources to email and phone assistance from NI Application Engineers.

Visit [ni.com/services](https://ni.com/services) for information about the services NI offers.

Visit [ni.com/register](https://ni.com/register) to register your NI product. Product registration facilitates technical support and ensures that you receive important information updates from NI.

NI corporate headquarters is located at 11500 North Mopac Expressway, Austin, Texas, 78759-3504, USA. For up-to-date contact information for your location, visit [ni.com/contact](https://ni.com/contact).



Information is subject to change without notice. Refer to the *NI Trademarks and Logo Guidelines* at [ni.com/trademarks](http://ni.com/trademarks) for information on NI trademarks. Other product and company names mentioned herein are trademarks or trade names of their respective companies. For patents covering NI products/technology, refer to the appropriate location: **Help»Patents** in your software, the `patents.txt` file on your media, or the *National Instruments Patent Notice* at [ni.com/patents](http://ni.com/patents). You can find information about end-user license agreements (EULAs) and third-party legal notices in the readme file for your NI product. Refer to the *Export Compliance Information* at [ni.com/legal/export-compliance](http://ni.com/legal/export-compliance) for the NI global trade compliance policy and how to obtain relevant HTS codes, ECCNs, and other import/export data. NI MAKES NO EXPRESS OR IMPLIED WARRANTIES AS TO THE ACCURACY OF THE INFORMATION CONTAINED HEREIN AND SHALL NOT BE LIABLE FOR ANY ERRORS. U.S. Government Customers: The data contained in this manual was developed at private expense and is subject to the applicable limited rights and restricted data rights as set forth in FAR 52.227-14, DFAR 252.227-7014, and DFAR 252.227-7015.

© 2020 National Instruments. All rights reserved.

378305A-01      May 28, 2020