

of Pins  
Initialize Globals  
Counter = 1

NI Vision Builder AI - Configuration - Connector Inspection.vbat

File Edit View Operate Tools Help

State: Acquire Image and Locate Pins

Display Result Image for this State

Acquire Image Connector 01.jpg

Locate Pins 1-5 # Objects = 5

Locate Pins 6-9 # Objects = 4

Check Number



# NI Vision Builder for Automated Inspection

## GETTING STARTED

# NI Vision Builder AI and Sony XCI Smart Cameras

This document describes how to install and configure NI Vision Builder for Automated Inspection (Vision Builder AI) software on a Sony XCI smart camera. Vision Builder AI is configurable software for building, benchmarking, and deploying machine vision applications. Vision Builder AI does not require programming. A built-in deployment interface is included so you can quickly deploy your inspection, guidance, and identification applications. Vision Builder AI also includes the ability to set up complex pass/fail decisions to control digital I/O devices and communicate with Ethernet devices such as PLCs, PACs, and HMIs.

## Installing the Software

---

The following sections describe how to install Vision Builder AI on the Sony XCI camera. You can install Vision Builder AI either by installing the software directly from the Vision Builder AI CD, or by connecting the Sony XCI camera to a network and installing Vision Builder AI over the network. Complete the steps in one of the following sections to install Vision Builder AI on a Sony XCI camera.

## Required Components

The following items are necessary to install Vision Builder AI on the Sony XCI camera:

- Sony XCI smart camera and documentation
- Monitor
- USB keyboard
- USB mouse

## Additional Components for Direct Installation

- USB CD-ROM drive
- USB hub

## Additional Components for Network Installation

- Ethernet cable
- Remote computer with CD-ROM drive

## Direct Installation

This section describes how to install Vision Builder AI directly onto a Sony XCI camera using a USB CD-ROM drive connected to the Sony XCI camera.

1. Connect the monitor and USB hub to the Sony XCI camera.
2. Connect the USB keyboard, USB mouse, and USB CD-ROM drive to the USB hub connected to the Sony XCI camera.
3. Turn on the Sony XCI camera.
4. Insert the Vision Builder AI CD into the CD-ROM drive. If the CD startup screen does not appear, use Windows Explorer to run `setup.exe` from the Vision Builder AI CD.
5. Follow the setup instructions on your screen.
6. Restart the Sony XCI camera.

Vision Builder AI is now installed on the Sony XCI camera.

## Network Installation

This section describes how to install Vision Builder AI on a Sony XCI camera using a CD-ROM drive that is shared on a network.

1. Connect the monitor, USB keyboard, and USB mouse to the Sony XCI camera.
2. Use an Ethernet cable to connect the Sony XCI camera to a network that contains a computer with a CD-ROM drive.
3. Turn on the Sony XCI camera. Refer to the Sony XCI camera documentation for specific instructions on how to turn on the camera.

## On a Network Computer

4. On a computer connected to the same network as the Sony XCI camera, insert the Vision Builder AI CD into the CD-ROM drive.
5. If the CD startup screen appears, click **Exit**.
6. Launch Windows Explorer.
7. Right-click the CD-ROM drive that contains the Vision Builder AI CD and select **Sharing and Security**.
8. In the drive properties window, select the **Share this Folder** option, and click **OK**.

## On the Sony XCI Camera

9. On the Sony XCI camera, select **Start»Run** to launch the Run dialog box.
10. In the Run dialog box, enter \\<computerName>, where <computerName> is the name of the computer that contains the CD-ROM drive with the Vision Builder AI CD. Click **OK**.
11. If necessary, enter your login information.
12. Double-click the shared CD-ROM drive containing the Vision Builder AI CD.
13. Double-click `setup.exe`.
14. Follow the setup instructions on your screen.
15. Restart the Sony XCI camera. Refer to the Sony XCI camera documentation for specific instructions on how to restart the camera.

Vision Builder AI is now installed on the Sony XCI camera.

# Activating the Software

---

This CD contains an evaluation version of Vision Builder AI that allows full access to all of the features for 30 days. After 30 days, if you wish to continue using Vision Builder AI, contact an NI sales representative at 800 433 3488 or visit [ni.com/vision](http://ni.com/vision) to purchase a licensed copy of Vision Builder AI.

## Configuring an Inspection

---

For information about configuring an inspection using Vision Builder AI, refer to the *NI Vision Builder for Automated Inspection Tutorial*. The *NI Vision Builder for Automated Inspection Tutorial* provides a series of exercises designed to introduce you to the Vision Builder AI environment and demonstrate how to perform common machine vision tasks.

To view an Adobe portable document format (PDF) file of the NI Vision Builder for Automated Inspection Tutorial, select **Start»All Programs»National Instruments»Vision Builder AI»Documentation»Vision Builder AI Tutorial**.

## Related Documentation

---

NI Vision Builder AI documentation is installed on the Sony XCI camera with the Vision Builder AI software. To view the Vision Builder AI documentation, select **Start»All Programs»National Instruments»Vision Builder AI»Documentation**.

The following documents contain information that you might find helpful and are provided as PDF files and HTML Help files.

- *NI Vision Builder for Automated Inspection Tutorial*—Contains general information about Vision Builder AI and provides step-by-step instructions for solving common visual inspection tasks, such as inspection, gauging, part presence, guidance, and counting.
- *NI Vision Builder for Automated Inspection: Configuration Help*—Contains information about using the Vision Builder AI Configuration interface to create a machine vision application.
- *NI Vision Builder for Automated Inspection: Inspection Help*—Contains information about running applications created using Vision Builder AI in the Vision Builder AI Inspection interface.

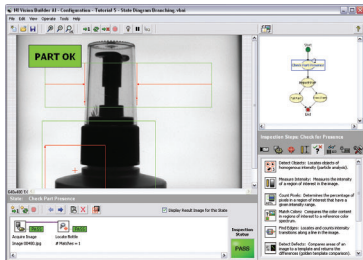


**Note** You must have Adobe Reader with Search and Accessibility 5.0.5 or later installed to view the PDF files. Refer to the Adobe Systems Incorporated Web site at [www.adobe.com](http://www.adobe.com) to download Adobe Reader.

# NI Vision Builder for Automated Inspection

## Configurable Vision Software

- Configure and deploy complete machine vision applications without programming
- Process images with more than 100 machine vision tools
- Communicate inspection results directly using the digital I/O and Ethernet protocols available on the Sony smart camera



*Evaluate Vision Builder for Automated Inspection  
FREE for 30 days, or license it for permanent use by  
calling the number below.*

[ni.com/vision](http://ni.com/vision) • Tel: 800 433 3488 • Fax: 512 683 9300 • [info@ni.com](mailto:info@ni.com)

National Instruments, NI, ni.com, and LabVIEW are trademarks of National Instruments Corporation. Refer to the *Terms of Use* section on [ni.com/legal](http://ni.com/legal) for more information about National Instruments trademarks. Other product and company names mentioned herein are trademarks or trade names of their respective companies. For patents covering National Instruments products, refer to the appropriate location: **Help>Patents** in your software, the `patents.txt` file on your CD, or [ni.com/patents](http://ni.com/patents).