

MATRIXx™

System Administrator's Guide (Windows)

The MATRIXx products and related items have been purchased from Wind River Systems, Inc. (formerly Integrated Systems, Inc.). These reformatted user materials may contain references to those entities. Any trademark or copyright notices to those entities are no longer valid and any references to those entities as the licensor to the MATRIXx products and related items should now be considered as referring to National Instruments Corporation.

National Instruments did not acquire RealSim hardware (AC-1000, AC-104, PCI Pro) and does not plan to further develop or support RealSim software.

NI is directing users who wish to continue to use RealSim software and hardware to third parties. The list of NI Alliance Members (third parties) that can provide RealSim support and the parts list for RealSim hardware are available in our online KnowledgeBase. You can access the KnowledgeBase at www.ni.com/support.

NI plans to make it easy for customers to target NI software and hardware, including LabVIEW real-time and PXI, with MATRIXx in the future. For information regarding NI real-time products, please visit www.ni.com/realtime or contact us at matrixx@ni.com.

Worldwide Technical Support and Product Information

ni.com

National Instruments Corporate Headquarters

11500 North Mopac Expressway Austin, Texas 78759-3504 USA Tel: 512 683 0100

Worldwide Offices

Australia 1800 300 800, Austria 43 0 662 45 79 90 0, Belgium 32 0 2 757 00 20, Brazil 55 11 3262 3599,
Canada (Calgary) 403 274 9391, Canada (Montreal) 514 288 5722, Canada (Ottawa) 613 233 5949,
Canada (Québec) 514 694 8521, Canada (Toronto) 905 785 0085, Canada (Vancouver) 514 685 7530,
China 86 21 6555 7838, Czech Republic 420 2 2423 5774, Denmark 45 45 76 26 00,
Finland 385 0 9 725 725 11, France 33 0 1 48 14 24 24, Germany 49 0 89 741 31 30, Greece 30 2 10 42 96 427,
India 91 80 51190000, Israel 972 0 3 6393737, Italy 39 02 413091, Japan 81 3 5472 2970,
Korea 82 02 3451 3400, Malaysia 603 9131 0918, Mexico 001 800 010 0793, Netherlands 31 0 348 433 466,
New Zealand 1800 300 800, Norway 47 0 66 90 76 60, Poland 48 0 22 3390 150, Portugal 351 210 311 210,
Russia 7 095 238 7139, Singapore 65 6226 5886, Slovenia 386 3 425 4200, South Africa 27 0 11 805 8197,
Spain 34 91 640 0085, Sweden 46 0 8 587 895 00, Switzerland 41 56 200 51 51, Taiwan 886 2 2528 7227,
Thailand 662 992 7519, United Kingdom 44 0 1635 523545

For further support information, refer to the *Technical Support and Professional Services* appendix. To comment on the documentation, send email to techpubs@ni.com.

Important Information

Warranty

The media on which you receive National Instruments software are warranted not to fail to execute programming instructions, due to defects in materials and workmanship, for a period of 90 days from date of shipment, as evidenced by receipts or other documentation. National Instruments will, at its option, repair or replace software media that do not execute programming instructions if National Instruments receives notice of such defects during the warranty period. National Instruments does not warrant that the operation of the software shall be uninterrupted or error free.

A Return Material Authorization (RMA) number must be obtained from the factory and clearly marked on the outside of the package before any equipment will be accepted for warranty work. National Instruments will pay the shipping costs of returning to the owner parts which are covered by warranty.

National Instruments believes that the information in this document is accurate. The document has been carefully reviewed for technical accuracy. In the event that technical or typographical errors exist, National Instruments reserves the right to make changes to subsequent editions of this document without prior notice to holders of this edition. The reader should consult National Instruments if errors are suspected. In no event shall National Instruments be liable for any damages arising out of or related to this document or the information contained in it.

EXCEPT AS SPECIFIED HEREIN, NATIONAL INSTRUMENTS MAKES NO WARRANTIES, EXPRESS OR IMPLIED, AND SPECIFICALLY DISCLAIMS ANY WARRANTY OF MERCHANTABILITY OR FITNESS FOR A PARTICULAR PURPOSE. CUSTOMER'S RIGHT TO RECOVER DAMAGES CAUSED BY FAULT OR NEGLIGENCE ON THE PART OF NATIONAL INSTRUMENTS SHALL BE LIMITED TO THE AMOUNT THEREOF PAID BY THE CUSTOMER. NATIONAL INSTRUMENTS WILL NOT BE LIABLE FOR DAMAGES RESULTING FROM LOSS OF DATA, PROFITS, USE OF PRODUCTS, OR INCIDENTAL OR CONSEQUENTIAL DAMAGES, EVEN IF ADVISED OF THE POSSIBILITY THEREOF. This limitation of the liability of National Instruments will apply regardless of the form of action, whether in contract or tort, including negligence. Any action against National Instruments must be brought within one year after the cause of action accrues. National Instruments shall not be liable for any delay in performance due to causes beyond its reasonable control. The warranty provided herein does not cover damages, defects, malfunctions, or service failures caused by owner's failure to follow the National Instruments installation, operation, or maintenance instructions; owner's modification of the product; owner's abuse, misuse, or negligent acts; and power failure or surges, fire, flood, accident, actions of third parties, or other events outside reasonable control.

Copyright

Under the copyright laws, this publication may not be reproduced or transmitted in any form, electronic or mechanical, including photocopying, recording, storing in an information retrieval system, or translating, in whole or in part, without the prior written consent of National Instruments Corporation.

Trademarks

AutoCode™, DocumentIt™, LabVIEW™, MATRIXx™, National Instruments™, NI™, ni.com™, RealSim™, SystemBuild™, and Xmath™ are trademarks of National Instruments Corporation.

Product and company names mentioned herein are trademarks or trade names of their respective companies.

Patents

For patents covering National Instruments products, refer to the appropriate location: **Help»Patents** in your software, the `patents.txt` file on your CD, or ni.com/patents.

WARNING REGARDING USE OF NATIONAL INSTRUMENTS PRODUCTS

(1) NATIONAL INSTRUMENTS PRODUCTS ARE NOT DESIGNED WITH COMPONENTS AND TESTING FOR A LEVEL OF RELIABILITY SUITABLE FOR USE IN OR IN CONNECTION WITH SURGICAL IMPLANTS OR AS CRITICAL COMPONENTS IN ANY LIFE SUPPORT SYSTEMS WHOSE FAILURE TO PERFORM CAN REASONABLY BE EXPECTED TO CAUSE SIGNIFICANT INJURY TO A HUMAN.

(2) IN ANY APPLICATION, INCLUDING THE ABOVE, RELIABILITY OF OPERATION OF THE SOFTWARE PRODUCTS CAN BE IMPAIRED BY ADVERSE FACTORS, INCLUDING BUT NOT LIMITED TO FLUCTUATIONS IN ELECTRICAL POWER SUPPLY, COMPUTER HARDWARE MALFUNCTIONS, COMPUTER OPERATING SYSTEM SOFTWARE FITNESS, FITNESS OF COMPILERS AND DEVELOPMENT SOFTWARE USED TO DEVELOP AN APPLICATION, INSTALLATION ERRORS, SOFTWARE AND HARDWARE COMPATIBILITY PROBLEMS, MALFUNCTIONS OR FAILURES OF ELECTRONIC MONITORING OR CONTROL DEVICES, TRANSIENT FAILURES OF ELECTRONIC SYSTEMS (HARDWARE AND/OR SOFTWARE), UNANTICIPATED USES OR MISUSES, OR ERRORS ON THE PART OF THE USER OR APPLICATIONS DESIGNER (ADVERSE FACTORS SUCH AS THESE ARE HEREAFTER COLLECTIVELY TERMED "SYSTEM FAILURES"). ANY APPLICATION WHERE A SYSTEM FAILURE WOULD CREATE A RISK OF HARM TO PROPERTY OR PERSONS (INCLUDING THE RISK OF BODILY INJURY AND DEATH) SHOULD NOT BE RELIANT SOLELY UPON ONE FORM OF ELECTRONIC SYSTEM DUE TO THE RISK OF SYSTEM FAILURE. TO AVOID DAMAGE, INJURY, OR DEATH, THE USER OR APPLICATION DESIGNER MUST TAKE REASONABLY PRUDENT STEPS TO PROTECT AGAINST SYSTEM FAILURES, INCLUDING BUT NOT LIMITED TO BACK-UP OR SHUT DOWN MECHANISMS. BECAUSE EACH END-USER SYSTEM IS CUSTOMIZED AND DIFFERS FROM NATIONAL INSTRUMENTS' TESTING PLATFORMS AND BECAUSE A USER OR APPLICATION DESIGNER MAY USE NATIONAL INSTRUMENTS PRODUCTS IN COMBINATION WITH OTHER PRODUCTS IN A MANNER NOT EVALUATED OR CONTEMPLATED BY NATIONAL INSTRUMENTS, THE USER OR APPLICATION DESIGNER IS ULTIMATELY RESPONSIBLE FOR VERIFYING AND VALIDATING THE SUITABILITY OF NATIONAL INSTRUMENTS PRODUCTS WHENEVER NATIONAL INSTRUMENTS PRODUCTS ARE INCORPORATED IN A SYSTEM OR APPLICATION, INCLUDING, WITHOUT LIMITATION, THE APPROPRIATE DESIGN, PROCESS AND SAFETY LEVEL OF SUCH SYSTEM OR APPLICATION.

Contents

About This Manual

Organization.....	ix
Conventions	ix
Font Conventions.....	ix
Format Conventions	x
Code Examples or Program Output	x
Symbol Conventions	x
Interactive Selections	x
Environment Variables	x
Note, Caution, and Warning Conventions.....	x
Related Publications	xi

Chapter 1

Installation Overview and Platform Requirements

Installation Overview.....	1-1
Platform Requirements	1-1
Hardware Requirements	1-2
Software Requirements	1-2
Compatible Compilers and Operating System Versions	1-3
Minimum Disk Space Requirements	1-3
Installation Configurations	1-4
Standard Installation.....	1-4
Server Installation.....	1-5
Client Installation	1-5
Licensing.....	1-5
Troubleshooting Information.....	1-5

Chapter 2

Software Structure

Planning Options.....	2-1
Directory Structure	2-1

Chapter 3 Licensing and Terminology

Licensing Overview.....	3-1
Floating and Node-Locked Licenses.....	3-1
Redundant License Servers.....	3-1
Flexible License Checkout.....	3-2
Xmath Licensing Commands.....	3-3
LICENSECHECKOUT.....	3-3
LICENSEUSER.....	3-3
LICENSEINFO.....	3-5
LICENSEFILE.....	3-5
ISIREFNUM.....	3-5
Using Licensing.....	3-6
License Files.....	3-6
Proxy License Files.....	3-8
Compatibility.....	3-8
Licensing Requirements.....	3-9
Finding the Host ID.....	3-9
Finding the Computer Name.....	3-10
Contacting National Instruments.....	3-10

Chapter 4 Installation and Related Tasks

Version 6.X Installation.....	4-1
Installing Other Components.....	4-6
Installing Altia Design Animation.....	4-6
Installing Altia FacePlate.....	4-6
Installing the Standalone License Manager.....	4-7
Installing Redundant License Servers.....	4-7
Updating a License File.....	4-8
Using Online Help.....	4-8
Installation-Related Tasks.....	4-9
Setting Up a User Environment for Printing.....	4-9
Running Multiple MATRIXx Versions.....	4-9
Recording Your Reference Number.....	4-9
Moving the ISIHOMEDirectory Tree to Another Directory.....	4-10
Troubleshooting Your Installation.....	4-10
Uninstalling Version 6.X.....	4-12

Chapter 5

FLEXlm Licensing Tools

FLEXlm Utilities	5-1
lmgrd.....	5-1
lmstat	5-2
lmreread.....	5-3
lmhostid.....	5-3
lmdiag.....	5-4
lmver.....	5-4
Resolving Problems	5-4
General Debugging Tips.....	5-5
Support Issues.....	5-5
Troubleshooting License Manager Problems	5-6
Host ID Problems	5-6
Connection Problems.....	5-6
Other Client Problems	5-7
Other Server Problems	5-8
Daemon Log File	5-10
Informational Messages.....	5-10
Configuration Problem Messages.....	5-12
Daemon Software Error Messages	5-13

Appendix A

Technical Support and Professional Services

About This Manual

This manual tells how to install MATRIXx Product Family version 6.X.

Organization

This manual includes the following:

- Chapter 1, *Installation Overview and Platform Requirements*, defines the version 6.X installation and platform requirements.
- Chapter 2, *Software Structure*, describes the MATRIXx Product Family directory structure and planning options.
- Chapter 3, *Licensing and Terminology*, describes licensing-related terminology and tasks.
- Chapter 4, *Installation and Related Tasks*, gives a detailed explanation of the version 6.X installation procedure and related tasks.
- Chapter 5, *FLEXlm Licensing Tools*, discusses the version 6.X license manager utilities, license manager debugging, and daemon log file.

Conventions

The following font, format, symbol and note, caution, and warning conventions appear in this document:

Font Conventions

Fonts other than the standard text default font are used as follows:

`Courier`

`Courier` is used for command and function names, file names, directory paths, environment variables, messages and other system output, code and program examples, system calls, prompt responses, and syntax examples.

bold Courier:

User input (anything you are expected to type in) is set in **bold Courier**.

italics

Italics are used with the default font for emphasis, first instances of terms, and publication titles.

Italics are used with **Courier** or **bold Courier** to denote placeholders in syntax examples or generic examples.

bold Helvetica Narrow Buttons, fields, and icons in a graphical user interface are set in **bold Helvetica narrow** type. Keyboard keys are also set in this type.

Format Conventions

Code Examples or Program Output

This manual uses a special formatting convention to present code examples or screen output from the installation program. The example format has a numbered heading followed by a line; the end of the example is also followed by a line.

Symbol Conventions

This manual uses the following symbols as described:

Interactive Selections

This manual uses the » symbol to link a sequence of interactive selections. Selections can be a series of menu selections or a series of icons. The following statement instructs you to click on each of the named icons in sequence to open the tool you need:

Check your System Log using the Event Viewer (select **Programs»Administrative Tools»Event Viewer**).

Environment Variables

This manual uses the % character to denote environment variables. For example, %SystemRoot%\system32\drivers\etc\hosts is not an absolute path, because it depends on the definition of %SystemRoot%. The most commonly used environment variable in this document is %ISIHOM%, which is used to refer to the MATRIXx Product Family installation directory.

Note, Caution, and Warning Conventions

Within the text of this manual, you may find notes, cautions, and warnings. These statements are used for the purposes described below.



Note Notes provide special considerations or details which are important to the procedures or explanations presented.



Caution Cautions indicate actions that may result in possible loss of work performed and associated data. An example might be a system crash that results in the loss of data for that given session.



Warning Warnings indicate actions or circumstances that may result in file corruption, irrecoverable data loss, data security risk, or damage to hardware.

Related Publications

National Instruments provides a library of publications to support its products. Of special interest to the users of this publication are the installation guides, summarized as follows:

- MATRIXx Product Family CD and booklet *Installation Guide (Windows)*
- *Using MATRIXx Version 6.X Online Documentation*
- *FLEXlm End User Manual* (from Macrovision Corporation)
- For additional documentation, see MATRIXx Help or the National Instruments Web site at ni.com/matrixx.

Installation Overview and Platform Requirements

This chapter provides an overview of hardware and software requirements for MATRIXx version 6.X.

Installation Overview

MATRIXx version 6.X includes installation software that performs a complete installation for the product. This includes three setup types as described in Table 1-1.

Table 1-1. Setup Types

Type	Description
Client	Installs client software only.
Server	Installs the product software on a network server (Windows NT only).
Standard	Installs the product software on a local PC.



Note The Server and Standard installation processes require approximately 100 MB of disk space during the installation process. The product software requires approximately 24 to 48 MB of RAM.

The installation software includes the Flexible License Manager (FLEXlm).



Note MATRIXx can be installed on a file server using a shared license manager.

Platform Requirements

National Instruments supports the MATRIXx version 6.X software in the hardware and software environments described in the following sections.

Hardware Requirements

The following requirements apply to all computers that will run MATRIXx on Windows 2000/NT/XP:

- Pentium II 500 MHz or equivalent.
- Minimum 32 MB RAM, 64 MB recommended.
- A video card that supports a minimum of 256 colors at 800 × 600 resolution; 65,536 colors at 1024 × 768 resolution is recommended; True Color setting (16 million) is supported.
- A CD-ROM drive.
- Approximately 100 MBs of disk space to complete a full MATRIXx installation. See Table 1-3 for details.
- A 2-button Microsoft compatible mouse, with a 3-button Logitech mouse or equivalent preferred.



Note You can change the number of colors for your display through **Start»Settings»Control Panel»Display»Settings**.

Software Requirements

The following requirements apply to all computers that will run MATRIXx on Windows 2000/NT/XP:

- The MATRIXx software requires Windows 2000, Windows NT version 4.0 or Windows XP. Supported installations include English, Japanese, and German.
- If you want to link your own C code to Xmath or SystemBuild, you must purchase and install a copy of Microsoft Visual C++ 5.0 or 6.0. For FORTRAN you must install a copy of DIGITAL Visual Fortran 5.0 or 6.0.



Note DIGITAL Visual Fortran 5.0 for Windows NT (releases 408 through 333E) requires a patch for the linker before it will work properly. Contact Digital at www.digital.com/fortran to acquire the patch.

- Floating licenses require properly functioning TCP/IP networking which includes Winsock 1.1 or later.
- Internet Explorer 5 or later is required for MATRIXx Help.

Compatible Compilers and Operating System Versions

The MATRIXx version 6.X software was developed and tested with the operating system versions and compiler versions listed in Table 1-2. These configurations are recommended for optimal compatibility.

Other operating system versions and compiler versions may be compatible with the MATRIXx version 6.X software, please check the National Instruments Support page at ni.com/support or contact Technical Support at support@ni.com or (877) 493-2404.

Table 1-2. Verified Compilers

Compiler	Windows NT 4.0, Windows 98, or Windows 95
C or C++	Microsoft Visual C / C++ version 5.0 or 6.0
FORTRAN	DIGITAL Visual Fortran version 5.0 or 6.0



Warning Other compilers may work in certain cases, but they are not supported. NI recommends against using unsupported compilers.

Minimum Disk Space Requirements

The minimum space requirements for the MATRIXx software on a Windows host are shown in Table 1-3. A complete installation requires approximately 100 MB of disk space during the MATRIXx installation process. This may be significantly larger for large disk partitions that use a FAT format.

Table 1-3. Minimum Disk Space Requirements

Product	Space Required
MATRIXx	77 MB
License Manager	3 MB
Netscape Navigator Stand-Alone (International)	16 MB
Altia Design Animation (optional)	22 MB
Altia FacePlate (optional)	20 MB
Full installation	~138 MB

Installation Configurations

MATRIXx supports three installation types on Windows hosts: standard, server, and client. A PC can only support one of these installation types at a time for a given version of MATRIXx. If you want to change installation types for a version, you should uninstall and then reinstall that version. Multiple different versions of MATRIXx software can be installed at one time on the same machine, possibly for different installation types.

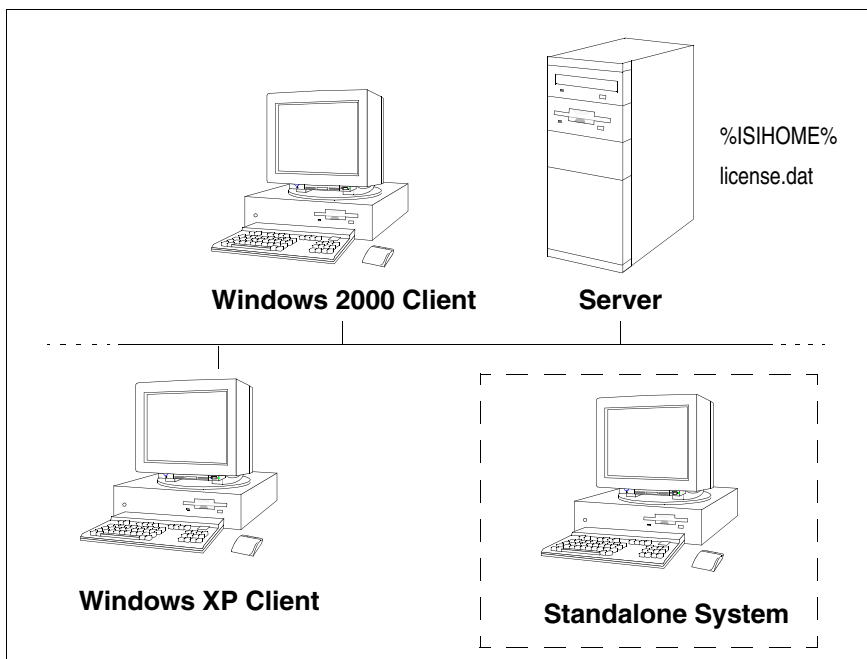


Figure 1-1. Typical Client-Server Configuration

Standard Installation

A standard installation installs the full set of MATRIXx software on the local Windows system. Typically, this type of installation is not visible to other machines on the network because it uses a local installation path not accessible to other systems.

If you perform a standard install specifying the installation directory with a valid pathname in Uniform Naming Convention (UNC) format, for example:

```
\\computername\sharename\ni
```

then the installation will be visible to other users similar to a server installation.

Server Installation

A server installation, installs the full set of MATRIXx software on the local Windows system similar to a standard installation. However, a server installation will, if necessary, automatically create a directory share with a user specified name for the local install directory, thus ensuring that the software is visible to other client systems on a network. A server installation can also accept a valid UNC format pathname for the installation directory path.

Client Installation

A client installation (requiring only 5 KB of disk space) creates shortcuts to an existing server installation of MATRIXx and updates any Windows shared system files on the client required to run the MATRIXx software. It does not place any other software on the client system. During a client installation of MATRIXx, you will be asked to specify the network pathname of an existing MATRIXx server installation.

All client machines that will use MATRIXx software must be able to access the %ISIHOMERoot directory on the server machine.

Licensing

MATRIXx uses FLEXlm licensing utilities. For licensing information, see Chapter 3, *Licensing and Terminology*, Chapter 5, *FLEXlm Licensing Tools*, or the FLEXlm End User Manual on the MATRIXx documentation CD.

Troubleshooting Information

For troubleshooting tips, see the *Troubleshooting Your Installation* section of Chapter 4, *Installation and Related Tasks*. For additional troubleshooting assistance contact support@ni.com.

Software Structure

This chapter describes installation planning options and version 6.X directory structure.

Planning Options

Before starting the installation, you should make decisions about how and where you want to install MATRIXx tools. These issues must be addressed *before* you start the installation procedure detailed in Chapter 4, [Installation and Related Tasks](#).

MATRIXx version 6.X must be installed in a different installation directory if you plan to keep versions prior to 6.X. The version 6.X installation will not affect an older version of MATRIXx software as long as you do not use the same parent directory. You do not have to do any extra work to keep the older version of MATRIXx, which will still use its own license manager.

You can install a copy of MATRIXx on a local node using either floating or node-locked licensing, or, you can use a file server (a shareable disk) and a shared license manager to install the MATRIXx software on a network server. The directory structure detailed here is of interest in both situations, as it handles multiple versions and multiple platforms.

Directory Structure

The directory structure shown in Figure 2-1, shows the MATRIXx product structure, which enables you to manage the software in a central location in a network environment. This structure reduces the system administration issues of multiple installations for a given platform, because installation can be completed solely on a file server using a common license manager. Then a simple client installation on a networked node will let you access the file server installation. You can safely install multiple versions of MATRIXx version 6.X into a common root installation directory (%I\$HOME%).



Note All machines that will use MATRIXx software must be able to access the %ISIHOMEx% root directory. %ISIHOMEx% and *installation_directory* (referred to elsewhere in this document) are equivalent.

The commands used to invoke the MATRIXx suite of products can be found in the directory %ISIHOMEx%\bin.

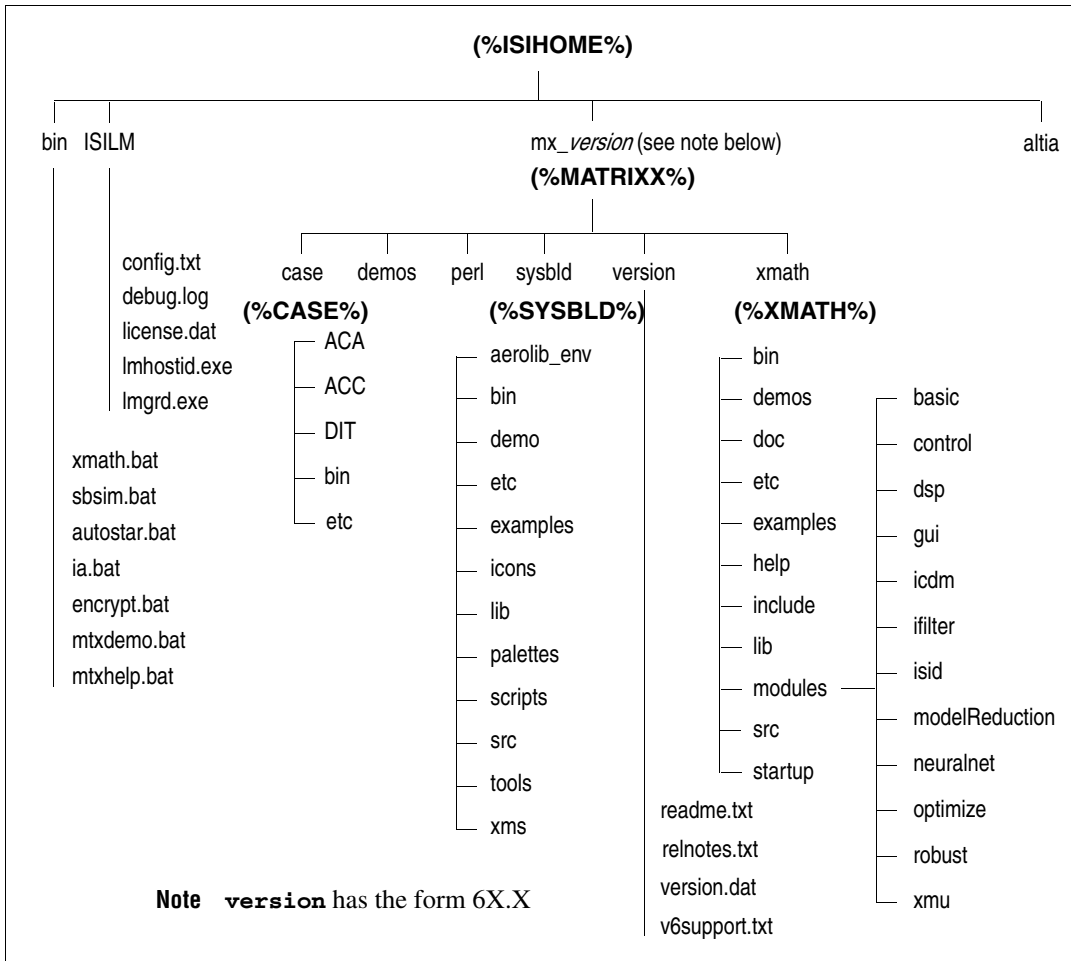


Figure 2-1. MATRIXx Product Family Sample File Structure

Licensing and Terminology

This chapter provides an overview of licensing and describes licensing-related terminology and tasks. Version 6.X includes a license daemon, `lmgrd.exe` which controls all Integrated Systems product licenses. `lmgrd.exe` resides in the directory `ISILM` and must be running on your license server (or on all three if you have a redundant license server configuration). It does not have to be on the node where you install version 6.X.

Licensing Overview

MATRIXx licensing includes the following features:

- Floating and node-locked licenses
- Redundant license servers (optional)
- Flexible license checkout

Floating and Node-Locked Licenses

License configurations for counted floating licenses, node-locked licenses, and evaluation licenses are available on Windows 2000/NT/XP systems. To check out a floating license or counted node-locked licenses, a client system must be connected to the network and have properly functioning TCP/IP software with Winsock support. Evaluation and uncounted node-locked licenses do not require that you have a running license server or network support.

Windows 2000/NT/XP systems can check out floating licenses from either a Windows NT or UNIX license server. To check out licenses from a network license server, a Windows system must reference a copy of the same `license.dat` file used by the network server, or it must reference a proxy license file (refer to the [Proxy License Files](#) section).

Redundant License Servers

Redundant license servers are a set of three nodes designated to serve the same license file. If any node fails, the other two nodes will still be available to serve the licenses for MATRIXx.

To support the redundant license server scheme, National Instruments requires information for three Windows servers. This information includes the computername and `hostid` (that is, an Ethernet address) for each server.

NI issues redundant license server keys once you provide the `hostid` of the three servers. At a minimum, you need to run the standalone license server installation program and start the license server on each machine. Follow the instructions described in the *Installing Redundant License Servers* section of Chapter 4, *Installation and Related Tasks*.

Figure 3-1 shows a typical redundant license-server configuration.

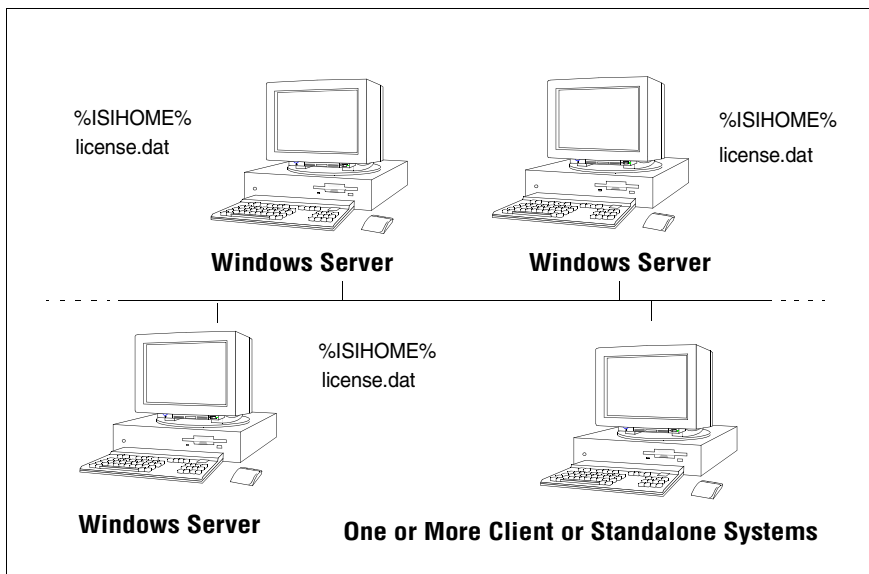


Figure 3-1. Typical Redundant License Server Configuration

Flexible License Checkout

With MATRIXx version 6.X licensing, a feature (product component) is checked out as you use it. A feature stays checked out until you exit that product component. For example, Xmath and SystemBuild modules are checked out when first used and stay checked out until you exit Xmath or SystemBuild. SystemBuild is checked out when you launch the Catalog Browser (by starting SystemBuild) and stays checked out until you exit SystemBuild. The flexible license checkout feature is also known as on-demand checkout.

Xmath Licensing Commands

Xmath has the following license-related commands:

- `LICENSECHECKOUT` for checking out features for future use
- `LICENSEUSER` for displaying assigned licenses for any feature names specified
- `LICENSEINFO` for displaying a license report for your site
- `LICENSEFILE` for displaying the current license file search path
- `ISIREFNUM` for identifying your reference number

All of these commands must be run from the Xmath Commands window.

LICENSECHECKOUT

`LICENSECHECKOUT` is an intrinsic command that checks out a license for the listed feature or features. Run `LICENSEINFO` to see a list of feature names. Features are specified as strings, and the name must be exactly as displayed by `LICENSEINFO`.

Although features are normally checked out on-demand, you can use `LICENSECHECKOUT` to reserve features for future use (for example, for a scheduled demo or presentation). They are checked in when you exit Xmath.

This command can be placed in a global or local `startup.ms` file to check out required features at startup. The syntax is as follows:

`LICENSECHECKOUT feature1, feature2, ... featureN`

For example:

`LICENSECHECKOUT "Xmath", "Control", "Sysid", "Sysid2", "sysbld", "case"`

LICENSEUSER

The `LICENSEUSER` utility displays assigned licenses for any feature names specified. The default feature is Xmath if no argument is specified. `LICENSEUSER` accepts feature names in string form. To see a list of the feature names for products you have purchased (for example, `aca` indicates AutoCode Ada), issue the `LICENSEINFO` command. The syntax for `LICENSEUSER` is as follows:

`LICENSEUSER feature1, feature2, ... featureN`

Typical output is shown in Example 3-1.

Example 3-1: LICENSEUSER output

licenseuser "xmath", "aca"

Users of Xmath:

Number of licenses purchased : 10
Number of unused licenses : 4

User	Node Name	Starting Time
muemura	sampras	Thu May 29 19:33:44 1999
lynch	tribble	Thu May 29 19:34:36 1999
sanjay	castaway	Sat May 31 19:01:04 1999
rpizzi	castor	Mon Jun 2 15:21:54 1999
dawn	venus	Wed Jun 4 11:05:06 1999
uma	sampras	Mon Jun 9 13:45:47 1999

Users of aca:

Number of licenses purchased : 4
Number of unused licenses : 2

User	Node Name	Starting Time
muemura	sampras	Thu May 29 19:56:44 1999
uma	sampras	Mon Jun 9 13:51:47 1999

LICENSEINFO

LICENSEINFO displays a license report for your site as shown in Example 3-2.

Example 3-2: LICENSEINFO license report

```

licenseinfo

License File: C:\Program Files\National Instruments\MATRIXx\mx_63\isilm\license.dat
=====
License Server Name: hardrock
License Server ID: 18000000
=====
Module Name           Feature Name  Expiration Date  Type           Seats  Licensed Node
-----
Xmath                 Xmath        31-jan-2002     Floating       10
Control Design Module Control       31-jan-2002     Floating       10
SystemBuild          sysbld       31-jan-2002     Floating       10
AutoCode C Single Processor acc          31-jan-2002     Node-Locked   4      80379b46
Model Reduction Module Modred       31-jan-2002     Floating       10
Interactive Animation Module Icdm        31-jan-2002     Floating       10
Robust Control Module Robust       31-jan-2002     Floating       10
RT/Fuzzy Module      blk_fuz     31-jan-2002     Floating       10
AutoCode Ada Single Processor aca         31-jan-2002     Floating       10
DocumentIt           docit       31-jan-2002     Node-Locked   4      80379b46

```

LICENSEFILE

The LICENSEFILE command displays the current license file search path. The syntax and example output are as follows:

LICENSEFILE

License files searched by MATRIXx are as follows:

```

\\AGGIES\isi\isilm\license.dat
\\AGGIES\isi\isilm\tplic.dat

```

ISIREFNUM

The ISIREFNUM command displays the reference number (also known as your customer identification number). You should have this number ready if you plan to call customer support.

The syntax and example output are as follows:

ISIREFNUM

```

Your ISI Reference Number is :
CUSTOMID99

```

Using Licensing

With concurrent licensing, you can have a different number of licenses for each module or application. An application or module is either available on a first-come, first served basis, or node-locked to a given CPU. Some common uses of licensing are as follows:

- To see all the features your site has purchased or to view the license expiration date, use the command `LICENSEINFO`.
- To see who is using a given feature, or to see if a feature is available, use the `LICENSEUSER` command and specify the desired feature.
- To see the current license file search path, use the command `LICENSEFILE`.
- To reserve features for future use (for example, for a scheduled demo or presentation), use the `LICENSECHECKOUT` feature.

The initial distribution of licenses is determined at the time of the installation; to change licensing, your system administrator must get a new key from National Instruments. To generate a new license file from this key, run the standalone license installation as described in the, [Updating a License File](#) section of Chapter 4, [Installation and Related Tasks](#).

National Instruments uses the FLEXlm license manager, a product of Macrovision Corporation. If you have license manager questions beyond the scope of this document, please see the *FLEXlm End User Manual* on the MATRIXx online documentation CD. For additional information about FLEXlm, see the Macrovision FAQ at www.macrovision.com/solutions/esd/support/lmwinfaq.htm.

License Files

The set of licensed features available for checkout by a MATRIXx user are contained in one or more license files, each containing encrypted feature lines.

The following default license files are used by the MATRIXx products:

- `%SIHOME%\SILM\license.dat`—This primary license file contains feature lines for built-in MATRIXx features. The `license.dat` file is generated from NI provided authorization keys during the MATRIXx or standalone license manager installation procedures.

- `%SIHOME%\ISILM\tplic.dat`—This optional file contains license feature lines for third-party MATRIXx components. The encrypted feature lines in this file and the instructions for using the file will typically be provided by your third-party supplier. Multiple features from different third-party suppliers can be placed in this file. Typically, this file will also contain the same SERVER and DAEMON lines as `license.dat`. This file is not modified during a MATRIXx or license manager installation, nor is it deleted by uninstall procedures.

The search paths used to locate these license files are set in the environment variable `%LM_LICENSE_FILE%` by the MATRIXx product launching scripts. The above NI license file paths are prepended to any existing definition of `%LM_LICENSE_FILE%`, thus allowing access to other MATRIXx or non-MATRIXx products also licensed by a FLEXlm license manager.

Normally, the only things you can change in a license file are:

- The hostname (not the hostid).
- The port number on the SERVER line. If this port number is already in use, the license daemon (`lmgrd`) will report `Address In Use`. The default port number used in MATRIXx 6.X license files is 27000, whereas for prior releases it was 5200. A valid number is any unused port number between 1025 and 64000. Beginning with MATRIXx 6.X, the port number can be removed and the FLEXlm license manager will serve on any available FLEXlm reserved port in the range 27000-27009. For redundant license servers, however, you must use a fixed port number.
- The path to the vendor daemon executable on the DAEMON line. (The vendor daemon is named `mtx.lmd`.)
- `name=value` pairs on a FEATURE line can be changed if name is lowercase.

Redundant license server files contain three SERVER lines. The first SERVER line defines the primary license server. The second and third lines define the secondary license servers.

Proxy License Files

If you are using a floating-license server, each licensing client needs a copy of the same license file used by the server. Alternatively, to avoid copying the license server file to each installation of MATRIXx, you can create a proxy license file in the ISILM directory of each MATRIXx installation. This approach can be used for both single and redundant license server configurations. The proxy license file (`license.dat`) can be constructed by taking the `SERVER` line or lines from the license server file and then adding a line containing `USE_SERVER`. For example, a proxy license file for a single server configuration would be as follows:

```
SERVER host1 17003456 27000
USE_SERVER
```

A proxy license file for a redundant server configuration, for example, would be:

```
SERVER host1 17003456 27002
SERVER host2 17004355 27002
SERVER host3 17007ea8 27002
USE_SERVER
```

Unless your server nodes are changed, you will not have to update the license file for each individual MATRIXx installation when the server license file is updated.

Although a proxy license file is the preferred way to reference the actual license file used by a remote license server, you can also use a `port@host` definition for either of the environment variables `LM_LICENSE_FILE` or `MTXLMD_LICENSE_FILE`. `port` is the license file port number and `host` is the hostname, and both are taken from the `SERVER` line of the actual license file. `MTXLMD_LICENSE_FILE` is similar in use to `LM_LICENSE_FILE`, except that it is specific to the MATRIXx license manager daemon and overrides any concurrent definition of `LM_LICENSE_FILE`.

Compatibility

The MATRIXx 6.X license manager uses the vendor daemon name `mtxlm` (versus `isilm` in prior releases) and the default port number 27000 (versus 5200 in prior releases). As a result, the MATRIXx 6.X license manager can coexist with earlier versions running on the same machine. Since version 6.X software must be installed in a different `%ISIHOMES%` directory, versions of the MATRIXx license manager prior to

version 6.X do not have to be stopped to install the new software. You would only need to kill the older license manager daemon (`lmgrd`) if you choose to remove the old software.

Because of the addition of new features and new license manager functionality, license keys issued prior to MATRIXx 6.X cannot be used to regenerate a license file for version 6.X.

Licensing Requirements

If you are a new user, your software is shipped with an evaluation key. Note that the key clearly states the expiration date. You can install the evaluation license, and then later regenerate the license file for a standard installation (as described in the [Updating a License File](#) section of Chapter 4, [Installation and Related Tasks](#)). In order to obtain a standard license, you must provide the `computername` and `hostid` for each license server machine.

Finding the Host ID

FLEXlm uses different machine identifications for different machine architectures. An Ethernet address is the preferred “host ID” for a Windows platform. An Ethernet address is a 6-byte quantity, with each byte specified as two hexadecimal digits. Specify all 12 hex digits when using an Ethernet address as a host ID.

The program `%ISIHOMEx%\ISILM\lmhostid` will print the Ethernet host ID that FLEXlm expects to use on any given machine. For floating licenses, you must provide an Ethernet address. For node-locked licenses, an Ethernet address is preferred, but a disk volume serial number for drive C: can be used. A disk volume serial number is an 8-character string with the dash omitted. Table 3-1 lists alternate methods to obtain the required host ID.

Table 3-1. Obtaining the Host ID

Host ID	DOS Shell Command	Example
Ethernet address	<code>ipconfig /all</code> (Physical address)	08002be5a721
Disk volume serial number for C: drive	<code>c: vol</code>	1F68-5D8A (disregard dash)

Finding the Computer Name

The Computer Name is defined at the time Windows is installed. To see the Computer Name, select **Start»Settings»Control Panel»Network**. The Identification tab appears; the first entry is the Computer Name.

Contacting National Instruments

Contact NI in one of the following ways:

- Complete a Key Request Form (included with your software) and fax it to (512) 683-9007.
- Send email with the information asked for in the Key Request Form to matrixx@ni.com
- Call (877) 493-2404 between 7a.m. and 7p.m. Central Time, Monday through Friday to speak with a MATRIXx representative to assist you with obtaining your license key.

NI supplies the authorization key(s) and checksum(s) used to generate the license file, which enables you to use the packages and modules you purchased. An authorization key or checksum is an alphanumeric string that does *not* contain the numbers 0, 1 or 5 to avoid confusion with the uppercase letters O, I, and S.

Installation and Related Tasks

This chapter describes how to install MATRIXx software, including any optional components such as Altia Design animation, and perform related tasks.

Version 6.X Installation

This section provides a detailed description of how to install MATRIXx Product Family version 6.X software on a client, server, or standalone PC.

Requirements

- Your system must meet the hardware and software requirements for your platform specified in Chapter 1, *Installation Overview and Platform Requirements*.
- Floating licenses require properly functioning TCP/IP networking which includes Winsock version 1.1 or later.

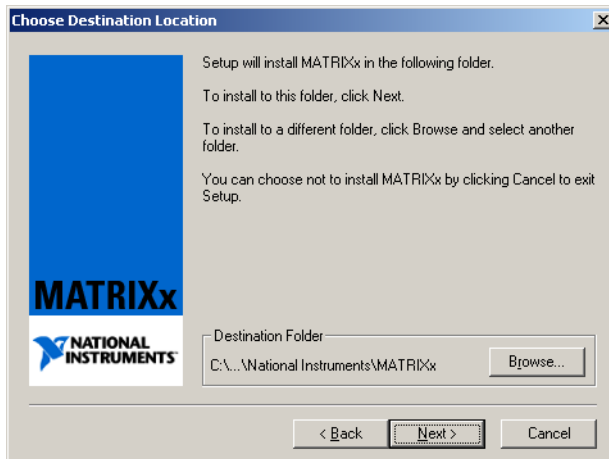
Installation Procedure

Before running the installation program, you will need the reference number, authorization key, and checksum.

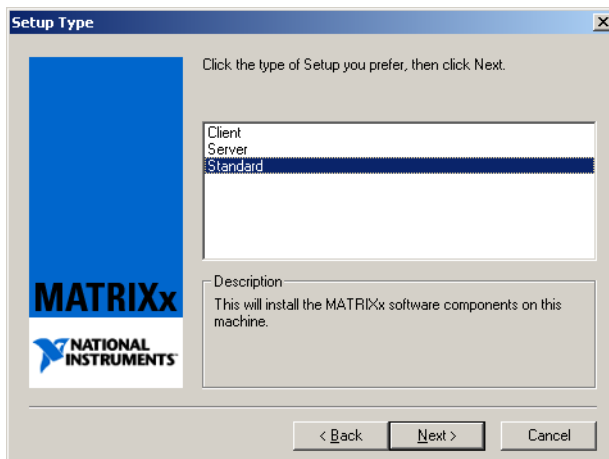


Note Before beginning the installation make sure you exit from any other software and stop all virus scan software.

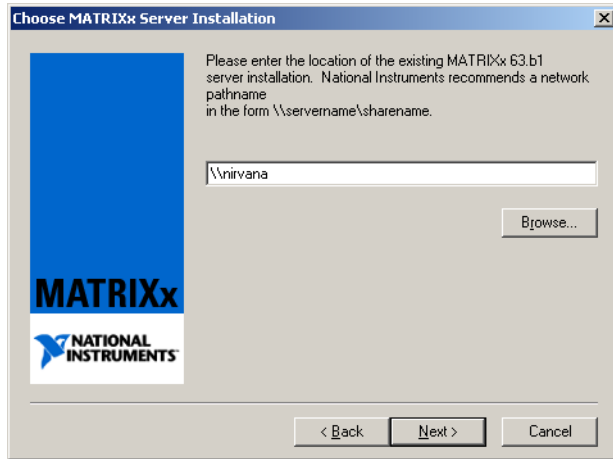
1. Place the version 6.X CD in the CD-ROM drive.
2. Use the Windows Explorer to find the `setup.exe` file in the `MATRIXx` directory and launch it.
3. After the Welcome screen (not shown), the following dialog prompts you for the location of your installation directory.



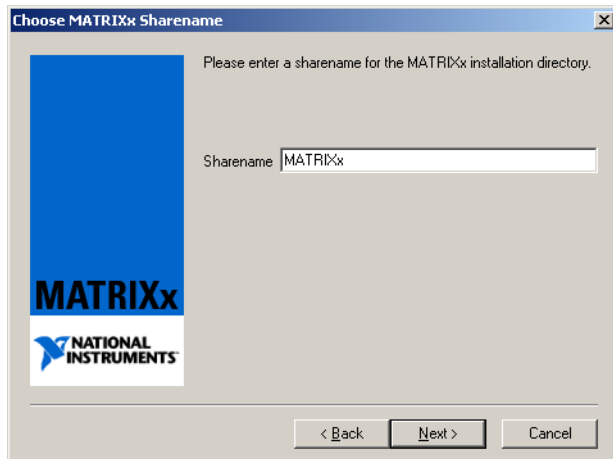
4. Setup defaults to `c:\Program Files\National Instruments\MATRIXx` but you can use the **Browse** button to select any other local (or server) location.
5. After you click **Next**, the Setup Type dialog prompts you to select Client, Server, or Standard (the default). Select the appropriate type as described in the [Installation Configurations](#) section of Chapter 1, [Installation and Related Tasks](#).



- a. If you select Client, you will be prompted for the path to an existing MATRIXx server installation.



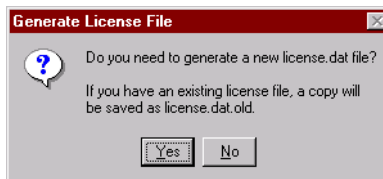
- b. If you select Server, you will be prompted for the Sharename for the installation directory unless you entered a universal naming convention (UNC) pathname as the install location.



6. Setup copies the MATRIXx product files, updates any shared components, and launches the license manager installation.

License Installation

7. The License Manager (ISILM) installation asks you whether you want to generate a new license file (`license.dat`).



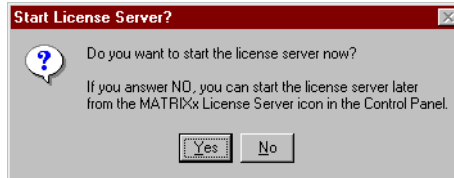
Note If you don't already have a version 6.X license file, click **Yes** to generate one. If you intend to access a floating license provided by another host, click **No** to avoid generating a new license. Then when the installation is complete, use a text editor to create a proxy license file named `license.dat` in the `installation_directory\ISILM` folder as described in the [Proxy License Files](#) section of Chapter 4, *Installation and Related Tasks*.

- a. If you click **No**, go to step 8.
- b. If you click **Yes**, the installation prompts you for your ISI reference number, authorization key, and checksum.

The version 6.X software has an option for running backup license servers called *redundant servers*. If you are using the redundant server option, you will also be prompted to enter the hostnames of the additional license servers.

After you enter valid data, the License File dialog (not shown) displays the generated license file.

- c. You will be prompted to start the license server, unless you have an Evaluation license.



Note The license server is not required for an Evaluation license. For other licenses, the license server can always be started later from the MATRIXx License Server icon in the Control Panel.



8. Upon completion, you can select to display the README file (an ASCII version of the release notes that are also available in the MATRIXx Help) or exit the installation.



Note In most cases rebooting is not necessary, but Setup will prompt you to reboot if required. If you have just completed a server installation, be sure to set your desired access permissions for the ISIHOMEDIR directory share.

9. If you are installing redundant license servers, complete the procedure described in the [Installing Redundant License Servers](#) section.
10. To start Xmath version 6.X, select **Start»National Instruments»MATRIXx 6.3»Xmath**, or enter either of the following from the Command Prompt:

```
installation_directory\bin\xmath
```

-or-

```
installation_directory\bin\xmath -v version
```

where version is the installation version that you just installed, or one of the versions in `installation_directory\bin`.

11. (Optional) Once you have verified that Xmath starts successfully, go to the *Installing Other Components* section, if you plan to use Altia Design animation or Altia FacePlate.

Installing Other Components

This section describes the installation procedures for installing optional MATRIXx components.

Installing Altia Design Animation

Since the Altia Design software uses the MATRIXx license manager, you must have either MATRIXx or the standalone license manager installed.

To install Altia Design animation software, follow these steps:

1. Verify that the MATRIXx CD is in your CD-ROM drive.
2. Use the Windows Explorer to find the `setup.exe` file in the `Altia\Design` directory, and launch it.
3. When the installation dialog prompts you for the installation directory, specify `ISIHOME` where `ISIHOME` is your existing MATRIXx installation directory.



Note If you choose not to install within your current `ISIHOME` directory, you must edit the Altia code words file after installation is complete to identify the path of the ISI license manager file (`license.dat`). Select **Start»Programs»Altia Design»Codeword File** and specify the path to the MATRIXx license file.

Installing Altia FacePlate

Since the Altia FacePlate software uses the MATRIXx license manager, you must have either MATRIXx or the standalone license manager installed.

To install Altia FacePlate software, follow these steps:

1. Verify that the MATRIXx CD is in your CD-ROM drive.
2. Use the Windows Explorer to find the `setup.exe` file in the `Altia\Face` directory, and launch it.
3. When the installation dialog prompts you for the installation directory, specify `ISIHOME` where `ISIHOME` is your existing MATRIXx installation directory.



Note If you choose not to install within your current ISIHOMEDIR directory, you must edit the Altia code words file after installation is complete to identify the path of the ISI license manager file (`license.dat`). Select **Start»Programs»Altia FacePlate»Codeword File** and specify the path to the license file.

Installing the Standalone License Manager

The standalone license manager installation, which populates only the ISILM subdirectory tree, is a subset of the full MATRIXx installation. It can be used to provide support for other standalone product installations such as Altia animation, which require MATRIXx licensing but may not need the full MATRIXx product set to function. In addition, it can provide the required licensing installation on single or redundant license servers.

Installation Procedure

Before running the installation program, you will need the ISI reference number, authorization key, and checksum.

1. Place the version 6.X CD in the CD-ROM drive.
2. Use the Windows Explorer to find the `setup.exe` file in the ISILM directory and launch it.
3. Select the **Install License Manager** setup type and follow the dialog prompts to complete the installation.
4. Each installation of MATRIXx installed in a separate location can access the license server via the proxy license file described in the [Proxy License Files](#) section of Chapter 3, *Licensing and Terminology*.

Installing Redundant License Servers

At a minimum, installing redundant license servers requires the installation of standalone license manager software and starting the license manager daemon on two other nodes in addition to the primary license server. Special license keys are required for a redundant license server configuration.

To install a typical redundant license server configuration, follow these steps:

1. Perform a standalone license manager installation on the primary license server (refer to *Installing the Standalone License Manager* section) or a complete MATRIXx installation if you want this machine to also serve the MATRIXx application files (refer to the [Version 6.X Installation](#) section). Either procedure requires generating a license file and starting the license daemon.

2. On each of two secondary license servers, run either the standalone license manager installation (refer to the [Installing the Standalone License Manager](#) section) or a complete MATRIXx installation (if you want to replicate all the MATRIXx files), and then start the license daemon on each machine.



Note Rather than generating the license file on each secondary license server, copy `license.dat` from the `ISILM` directory of the primary server to the `ISILM` directory of each secondary server before starting the license daemons. Edit the `DAEMON` line of each secondary copy of the `license.dat` file to point to the daemon path that contains `mtx1md.exe` for that server.

3. Each separate installation of MATRIXx can access the license server with a proxy license file as described in the [Proxy License Files](#) section of Chapter 3, [Licensing and Terminology](#).

Updating a License File

To update a license file, run the standalone license manager installation as described in the [Installing the Standalone License Manager](#) section and select the **Update License File** setup type.

Using Online Help

MATRIXx version 6.X provides a hypertext markup language (HTML) help system. MATRIXx Help is a self-contained system with multiple hypertext links from one component to another. This help system, augmented by online and printed manuals, covers most MATRIXx topics except for installation.

MATRIXx Help runs with Internet Explorer. The MATRIXx CD-ROM includes the supported version, which must be installed independently using the Netscape installation.

Printing Files

To print a Help topic, go to the Topics Hierarchy, and select a topic (for example, **Dynamic Systems»Control Design**) and then right click and hold. An Internet Explorer window displays with one of the options saying “Open Frame in New Window.” Once the Help topic is in the new window, select Print (or any other standard Internet Explorer capability).

Installation-Related Tasks

Setting Up a User Environment for Printing

The environment variable %XMATH_PRINT% defines the printer for MATRIXx. The following are sample definitions for %XMATH_PRINT%, where \\pluto\hp4 should be replaced by your printer.

Set the following using the Control Panel system applet:

```
set XMATH_PRINT=%MATRIXX%\xmath\bin\
xmprint \\pluto\hp4
```

Running Multiple MATRIXx Versions

You can install multiple versions of MATRIXx version 6.X or later under a common directory. If you have multiple versions installed, the following command lets you run a selected version:

```
installation_directory\bin\command_name -v version
```

where *command_name* is *xmath*, *sbsim*, *autostar*, *ia*, *encrypt*, *mtxdemo*, or *mtxhelp*, and *version* is one of the versions in *installation_directory\bin*. The version string appears as a suffix on the launching scripts.

Recording Your Reference Number

To help us provide rapid support when you call National Instruments, the installation procedure prompts you for the 10-character reference number while installing MATRIXx 6.X or the license manager. Your reference number is stored in the file %ISIHOM% \ISILM\config.txt. If you do not have a reference number, you can obtain one from National Instruments when you request your Authorization Key and enter it into the first line of the config.txt file as follows:

```
ISI REFERENCE NUMBER: 10_character_string
```

You can use the Xmath ISIREFNUM command to display the reference number.

Moving the ISIHOMEDirectory Tree to Another Directory

If you want to move the ISIHOMEDirectory tree to another directory after installing MATRIXx version 6.X, the preferred method is as follows:

1. Save the license.dat file (if required).
2. Uninstall the MATRIXx software after stopping the license daemon.
3. Reinstall MATRIXx in the new directory location.
4. Copy the license.dat file to the new directory location.
5. Restart the license daemon.

Troubleshooting Your Installation

The following sections provide some troubleshooting tips.

Virus Scanners and Utility Software

It is important that virus scanner software be disabled before installing MATRIXx. Virus scanners and some utility software can interfere with the ability of the InstallShield program to run external programs during installation. External programs are used during install to set the installation path in MATRIXx launching scripts and to generate the license file. Symptoms of external program failure are that the MATRIXx launching scripts do not have the correct installation path set in environment variables such as %ISIHOMEDirectory%, thus causing Xmath and other programs to fail to launch. If license file generation fails during an install, Xmath may report a license file error when trying to run.

It is possible to run the external programs from the command line after an install to fix these problems without performing a complete reinstall. You can invoke each of the two programs listed below without providing parameters to get a usage message that describes the required command-line arguments.

- To generate a new license file from the Command Prompt window, change directory to %ISIHOMEDirectory%\ISILM and run the license file generator engine.exe. You should use the -nolog parameter when generating the license from the command-line. This program replaces the license.dat file in the %ISIHOMEDirectory%\ISILM directory.
- To reset the installation path in the MATRIXx launching scripts, run the Perl program moveinstall.pl. You can invoke this program as follows to get its usage description:

```
%MATRIXx%\perl\perl.exe %MATRIXx%\version\  
moveinstall.pl
```

where %MATRIXX% is the MATRIXx product subdirectory as shown in Figure 2-1, *MATRIXx Product Family Sample File Structure*.

Temp Directory Usage During Install

InstallShield uses the Windows TEMP folder during installations. It is therefore important that sufficient disk space exist on the disk drive containing TEMP (which may be different from the drive where you are installing MATRIXx). An installation can fail when there is insufficient disk space on the TEMP drive. On rare occasions, an InstallShield install can fail due to remnants in the TEMP folder of a previously aborted install. You can avoid this problem by clearing the contents of the TEMP folder.

License Servers

The license server must be started unless you are using an Evaluation license or are using another network node as a floating license server. When the license server is properly started, the lmgrd and mtxmlmd processes should appear in the process list of the Windows task manager. You can use the MATRIXx License Server applet in the Windows Control Panel to start or stop the license server or to check its status. You can also check the contents of the license server diagnostic log file,

installation_directory\ISILM\debug.log, to see if the license server is running correctly. If the license server is running and you wish to use a different copy of the license.dat file, you should stop the license server first, copy the new license.dat file and then restart the license server.

If you try to perform one of the following licensing tasks and receive an error message, you may be able to correct it by identifying the cause as described in Table 4-1.

Table 4-1. Error Message Definitions

Command	Error Message or Problem	Cause or Remedy
lmdiag	lmdiag reports that the hostid is correct, but the license daemon has not been started.	Kill all lmgrd processes started for the license.dat file (they are trying to use the same TCP/IP port) and start a new lmgrd process.
lmreread -c license_file	You cannot use lmreread to change server node names or port numbers.	You have changed the server name or port number. Kill the old daemon, then restart the license daemon .

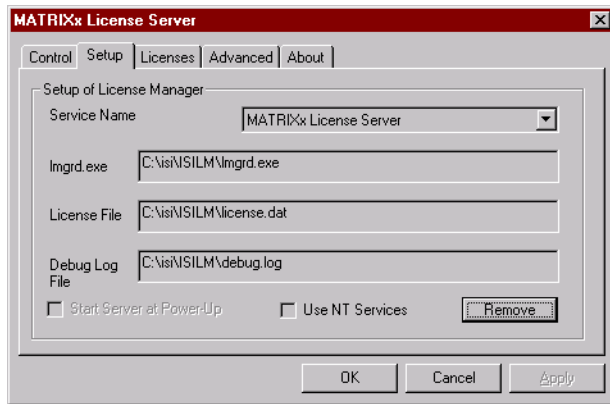
Uninstalling Version 6.X

The following summarizes the items to consider when performing a complete uninstall of MATRIXx software:

- All MATRIXx and Altia software should be removed by using the **Add/Remove Programs** applet in the System Control Panel.
- If you want to uninstall the optional Altia Design animation software and it is installed under the MATRIXx installation directory, then NI recommends that you uninstall it before removing MATRIXx.
- On Windows NT only, if you want to uninstall the MATRIXx License Server, then NI recommends that you uninstall it before removing MATRIXx.
- On Windows NT only, if you want to uninstall a server installation of the MATRIXx version 6.X software, you should first remove any file shares associated with the MATRIXx installation directory.

You will need to take the following steps to completely remove both the license server and the MATRIXx software:

1. Stop and remove the MATRIXx License Server service from your machine by taking *one* of the following steps:
 - Select **Control Panel**»**MATRIXx** License Server. On the Control tab dialog, click **Stop** (if a failure is reported, the server may already be stopped). On the Setup tab click **Remove**



- Alternatively, invoke `%ISIHOMEx% \ISILM\stopsrv.exe` from a Command Prompt window to shut down the license server and remove it.
2. Remove the MATRIXx License Server and MATRIXx version 6.X software by taking these steps:
 - a. Use **Control Panel»Add/Remove Programs** to remove the MATRIXx License Server.
 - b. Use **Control Panel»Add/Remove Programs** to remove the MATRIXx version 6.X software.
 3. Close the Control Panel, and then remove the MATRIXx License Server icon from the Control Panel by deleting the `mtxlm.cpl` file from the Windows `system32` directory. This file must be removed manually because Windows will not let you remove it during the uninstall process.

FLEXlm Licensing Tools

This chapter describes the FLEXlm utilities. This includes explaining how to troubleshoot common license manager problems and describes messages from the daemon log file. For additional licensing documentation, see the *FLEXlm End User Manual* from Macrovision Corporation on the MATRIXx documentation CD.

FLEXlm Utilities

MATRIXx Product Family version 6.X uses FLEXlm for its license server. FLEXlm provides the following utilities to help manage the licensing activities on the network:

<code>lmstat</code>	Helps you monitor the status of all network licensing activities.
<code>lmdiag</code>	Lets you diagnose problems when you cannot check out a license.
<code>lmdown</code>	Provides the means for an orderly shutdown of license daemons.
<code>lmgrd</code>	Starts the license daemon.
<code>lmhostid</code>	Reports the host ID of a system.
<code>lmreread</code>	Causes the license daemon to reread the license file and start any new vendor daemons.
<code>lmver</code>	Reports the FLEXlm version of a library or a binary.

lmgrd

`lmgrd` is the main daemon program for FLEXlm. When you invoke `lmgrd`, it looks for the license file. The license file contains information about vendors and features.

Syntax is:

```
lmgrd [ -c license_file ] [ -t timeout ] [ -s interval ]
[ -b ] [ -l logfile ]
```

where:

<i>-app</i>	Is required for Windows systems.
<i>-c</i> <i>license_file</i>	Uses the specified license file.
<i>-t timeout</i>	Sets a timeout interval, in seconds, during which redundant daemons must complete their connections to each other. The default value is 10 seconds. A larger value may be desirable if the daemons are being run on busy systems or a heavily loaded network.
<i>-s interval</i>	Specifies the <i>logfile</i> timestamp interval, in minutes. The default is 360 minutes.
<i>-l logfile</i>	Specifies the pathname to the log file. If this option is not specified, the log will be sent to standard output.
<i>-v</i>	Prints the <i>lmgrd</i> version number.

lmstat

The *lmstat* utility helps you monitor the status of all network licensing activities, including:

- Which daemons are running
- Users of individual features
- Users of features served by a specific daemon

Syntax is:

```
lmstat [-a] [-S [DAEMON]] [-f [feature]]
[-s [server_name]] [-t value] [-c license_file] [-A]
[-l [regular expression]]
```

where:

<i>-a</i>	Displays everything.
<i>-A</i>	Lists all active licenses.

```

-c          Uses license_file.
license_file

-S [DAEMON] Lists all users of the specified daemon's features.

-f          Lists users of the specified feature(s).
[feature_name]

-l [regular expression] Lists users of matching license(s).

-s          Displays status of server node(s).
[server_name]

-t value   Sets lmstat time-out to value.

```

lmreread

The `lmreread` utility causes the license daemon to reread the license file and start any new vendor daemons that have been added. Additionally, all pre-existing daemons will be signaled to reread the license file for changes in feature licensing information. Syntax is:

```
lmreread [-c license_file]
```



Note If you use the `-c` option, the license file specified will be read by `lmreread`, not by `lmgrd`; `lmgrd` rereads the file it read originally. Also, `lmreread` cannot be used to change server node names or port numbers. Vendor daemons will not reread their option files as a result of `lmreread`.

lmhostid

The `lmhostid` utility reports the host ID of a system. Syntax is:

```
lmhostid [ether | long]
```

The output of this command appears as follows:

```
lmhostid - Copyright (c) 1989, 199x Highland Software,
Inc. The FLEXlm host ID of this machine is "69021c89"
```

The `ether` option causes `lmhostid` to print the Ethernet address on Hewlett-Packard (HP) systems. On HP systems the `long` option prints the value of the HP ID module. These options are only available in FLEXlm v2.21 or later. The default is `long` for FLEXlm v2.21 or earlier, and `ether` for FLEXlm v2.4 or later.

lmdiag

`lmdiag` allows you to diagnose problems when you cannot check out a license.

Usage is:

```
lmdiag [-c license_file] [-n] [feature]
```

where `-c license_file` path to file to diagnose. `-n` run in noninteractive mode; `lmdiag` will not prompt for any input in this mode. In this mode, extended connection diagnostics are not available. Feature diagnose this feature only.

If no feature is specified, `lmdiag` will operate on all features in the license file(s) in your path. `lmdiag` will first print information about the license, then attempt to check out each license. If the checkout succeeds, `lmdiag` will indicate this. If the checkout fails, `lmdiag` will give you the reason for the failure. If the checkout fails because `lmdiag` cannot connect to the license server, then you have the option of running “extended connection diagnostics.”

These extended diagnostics attempt to connect to each port on the license server node, and can detect if the port number in the license file is incorrect. `lmdiag` will indicate each port number that is listening, and if it is an `lmdiag` process, `lmdiag` will indicate this as well. If `lmdiag` finds the vendor daemon for the feature being tested, then it will indicate the correct port number for the license file to correct the problem.

lmver

`lmver` reports the FLEXlm version of a library in binary. Usage is:

```
lmver [filename]
```

where `filename` can be `mtxld.exe` or `lmgrd.exe`.

Resolving Problems

This section offers some general debugging tips, and discusses information you should gather before contacting support. The Troubleshooting and License Manager Problems section lists common license manager problems users have encountered before.

General Debugging Tips

The following are tips for debugging:

- Examine the `%ISIHOME%\ISILM\debug.log` file.
- If you cannot check out a feature, run:

```
%ISIHOME%\ISILM\lmdiag -c %ISIHOME%\ISILM\license.dat
```
- If the license daemon appears to have started correctly (which you should be able to determine from the `isi.log` file), try running `lmstat` to see if that program has the same problem as your application.

```
lmstat -a -c %ISIHOME%\ISILM\license.dat
```

Support Issues

When you make a support call, please be prepared to answer the following questions:

- What kind of machine is your license daemon running on? What version of the operating system is the application running on?
- What version of FLEXlm does the program use? Use the following command on your `mtx1md` vendor daemon and application:

```
%ISIHOME%\ISILM\lmver %ISIHOME%\ISILM\mtx1md.exe
```
- What error or warning messages appear in the log file? Did the daemon start correctly? Look for a message such as:

```
server xyz started for: feature1 feature2.
```
- What is the output from running `lmstat -a`?
- Are you running other products which are also licensed by FLEXlm? National Instruments does not support combined license files.

Troubleshooting License Manager Problems

This section lists areas of FLEXlm administration that have given customers difficulty in the past. Categories are *Host ID Problems*, *Connection Problems*, and *Other Client Problems*.

Host ID Problems

symptom When I run the license manager on my machine, it tells me it is the wrong host ID.

cause The vendor daemon checks the host ID listed on the `server` line in the license file; if it does not match the host ID of the machine it is running on, this message will be printed.

Possible causes include:

1. You are trying to run the license daemon on a different machine from the machine the file was made for.
2. The host ID of the machine you are running on changed (for example, the HP ID module was moved, or the CPU board was replaced).
3. The host ID in the license file was modified.

solution Verify that the host ID of the machine where the vendor daemon (or node-locked client program) is being run matches the host ID specified in the license file (on the `server` line for the vendor, or on the `feature` line for a node-locked client). You can run the `lmhostid` program to see what FLEXlm thinks the host ID is. You cannot modify the host ID in the license file. If the host ID of your server machine changes, you will have to get a new license file from your software vendor.

Connection Problems

symptom The application program (or `lmstat`) can't connect to the server to check out a license.

cause The FLEXlm routines in the application are unable to make a TCP connection to the server and port specified in the license file. Possible reasons for this are:

1. The wrong license file is being referenced by the application program.
2. The server machine specified in the license file is down.
3. The vendor daemon specified in the license file is not running.
4. The `hostname` in the license file is not recognized by the system.
5. The network between the client machine and the server machine is down.
6. TCP is not running on your machine.

solution

Verify that the application is using the proper license file. Verify that the specified server machine is up and reachable by executing another command that uses TCP, such as `rsh` or `rlogin`, from the client to the server. Verify that the vendor daemon is running (you can use the `ps` command on the server to look for it). Examine the license log file to see if any problems are reported, particularly messages indicating that the vendor daemon has quit. Run `lmstat -a` from the server machine to verify that the vendor daemon is alive. Run `lmstat -a` from the client machine to verify the connection from client to vendor daemon across the network. Try using `telnet hostname portnum` where `hostname` and `portnum` are the same as on the `server` line in your license file.

Other Client Problems

symptom

When I run my application program (or vendor daemon), I get the error `bad code`.

cause

Possible causes for this are:

1. The license file was modified (either the host ID on a `server` line or anything on the `feature` line was changed).
2. The vendor used the wrong version of his license creation program to generate your license file (or there is a bug in that process).

solution

You cannot modify the license file. If you need to change something in your license file, you must get a new license from Integrated Systems.

- symptom** When the second user tries to check out a license, the vendor daemon prints an error concerning `Parameter mismatch` in the log file and refuses the license.
- cause** The most likely cause of this problem is that you are simultaneously trying to run two different versions of the application program, and the software vendor has not specifically set up the new version for this kind of compatibility. Check the license server log file for a `comm version mismatch` warning message; this indicates that someone is running a V1.5 client with a V2.1 or later license server.
- solution** Run only the new version of the application (or only the old version).

Other Server Problems

- symptom** When I start `lmgrd`, it says `Retrying socket bind (address in use: port xxxx)`.
- cause** The license server listens on the port `xxxx` that has already been used by another server program. 99.44% of the time, if it's in use, it's because `lmgrd` from ISI or another vendor is already running on the port—or was recently killed, and the port isn't freed yet.
- solution** In the `license.dat` file ISI has put 27000 at the end of the `SERVER` line as the port number. You can remove it to let `lmgrd` scan for a free port from 27000 to 27009. You can also specify a port number selected by yourself for other concerns like farewell.



Warning The portscan feature of `lmgrd` is only available for FLEXlm v6+ licenses. You cannot drop the port numbers when configuring redundant servers.

- symptom** When I start up `lmgrd`, it says `exec1 failed on my vendor daemon`.

- cause** `lmgrd` uses `exec1` to start each vendor daemon running. If there is a problem starting the vendor daemon, this message is output to the log file. This error is typically caused by one of the following:
1. There is no executable at the location referred to by the license file (and printed out in the log file).
 2. The executable does not have the proper protection to be run (the file does not have the **X** bit set, or one of the directories in the path is not readable).
 3. There was an error building the executable, and it cannot be run.
 4. The executable is for a different machine architecture.
- solution** Verify that the path to the vendor daemon is absolute, and that it points to the executable program itself, not the containing directory (for FLEXlm v1.5). Ensure that the file exists by doing an `ls -l` of the vendor daemon `filename(s)` specified in the log file. Make sure you do this as the same user that started `lmgrd`. Verify that the file is executable. Run the vendor daemon directly from the command line. If the vendor daemon is properly linked, it will tell you that it must be run from `lmgrd`; if it crashes or fails to execute, then it is not properly linked.
- symptom** The license server keeps reporting `lost lock` errors in the log file and exiting.
- cause** The lockfile is being removed by someone else. There could be another daemon running, or the system administrator (or a script) could have deleted the file.
- solution** Check to see if there is more than one copy of the daemon running. Check for more than one `lmgrd` running as well, since it will restart your vendor daemon when it is killed. If more than one `lmgrd` is running, kill them all, then kill any remaining vendor daemons and start one fresh copy of `lmgrd`. Check to see whether a shell script is running that cleans out `tmp`. If so, try modifying it so that it does not delete zero length files.

Daemon Log File

Daemons generate log files with `DAEMON NAME` messages where:

`DAEMON NAME` Either license daemon or the string from the `DAEMON` line that describes your daemon. In the case where a single copy of the daemon cannot handle all of the requested licenses, an optional underscore followed by a number indicates that this message comes from a forked daemon.

`message` The text of the message.

The log file, available as `%ISIHOME%\ISILMdebug.log`, can be used to:

- Inform users when they need to purchase additional application software licenses.
- Diagnose configuration problems.
- Diagnose daemon software errors.

Informational Messages

These messages are only informational and do not necessarily indicate an error or a problem.

Connected to <i>node</i> .	This daemon is connected to its peer on node <i>node</i> .
CONNECTED, master is <i>name</i> .	The license daemons log this message when a quorum is up and everyone has selected a master.
DENIED: <i>N feature to user (N licenses)</i>	<i>user</i> was denied access to <i>N</i> licenses of <i>feature</i> .
EXITING DUE TO SIGNAL <i>nnn</i> . EXITING with code <i>nnn</i> .	All daemons list the reason that the daemon has exited.
EXPIRED: <i>feature</i> .	<i>feature</i> has passed its expiration date.
IN: <i>feature</i> by <i>user</i> (<i>N licenses</i>).	<i>user</i> has checked back in <i>N</i> licenses of <i>feature</i> .
License Manager server started.	The license daemon was started.

Lost connection to <i>host</i> .	A daemon can no longer communicate with its peer on node <i>host</i> , which can cause the clients to have to reconnect, or cause the number of daemons to go below the minimum number, in which case clients may start exiting. If the license daemons lose the connection to the master, they will kill all the vendor daemons; vendor daemons will shut themselves down.
Lost quorum.	The daemon lost quorum, so it will only process connection requests from other daemons.
MULTIPLE <i>xxx</i> servers running. Please kill, and restart license daemon.	The license daemon has detected that multiple copies of vendor daemon <i>xxx</i> are running. The user should kill all <i>xxx</i> daemon processes and restart the license daemon.
OUT: <i>feature</i> by <i>user</i> (<i>N</i> licenses).	<i>user</i> has checked out <i>N</i> licenses of <i>feature</i>
RESERVE <i>feature</i> for HOST <i>name</i> . RESERVE <i>feature</i> for USER <i>name</i> .	A license of <i>feature</i> is reserved for either user <i>name</i> or host <i>name</i> .
REStarted <i>xxx</i> (internet port <i>nnn</i>)	Vendor daemon <i>xxx</i> was restarted at internet port <i>nnn</i> .
Retrying socket bind (address in use).	The license servers try to bind their sockets for approximately 6 minutes if they detect “address in use” errors.
Selected (EXISTING) master node.	This license daemon has selected an existing master (node) as the master.
SERVER shutdown requested.	A daemon was requested to shut down via a user-generated kill command.
[NEW] Server started for: <i>feature-list</i>	A (possibly new) server was started for the features listed.
Shutting down <i>xxx</i> .	The license daemon is shutting down the vendor daemon <i>xxx</i> .
SIGCHLD received. Killing child servers.	A vendor daemon logs this message when a shutdown was requested by the license daemon.
Started <i>name</i> .	The license daemon logs this message whenever it starts a new vendor daemon.
Trying connection to <i>node</i> .	The daemon is attempting a connection to <i>node</i> .

Configuration Problem Messages

hostname: Not a valid server host, exiting	This daemon was run on an invalid hostname.
hostname: Wrong hostid, exiting	The host ID is wrong for <i>hostname</i> .
BAD CODE for <i>feature-name</i>	The specified feature name has a bad encryption code.
CANNOT OPEN options file <i>file</i>	The options file specified in the license file could not be opened.
license daemon: lost all connections	This message is logged when all the connections to a daemon are lost, which often indicates a network problem.
lost lock, exiting	Error closing lock file.
Unable to re-open lock <i>file</i>	The vendor daemon has a problem with its lock file, usually because of an attempt to run more than one copy of the daemon on a single node. Locate the other daemon that is running via a <code>ps</code> command, and kill it with <code>kill -9</code> .
NO DAEMON line for <i>daemon</i>	The license file does not contain a <i>DAEMON</i> line for <i>daemon</i> .
No <i>license</i> service found	The TCP <i>license</i> service did not exist.
No license data for <i>feat</i> , feature unsupported	There is no feature line for <i>feat</i> in the license file.
No features to serve!	A vendor daemon found no features to serve. This could be caused by bad data in the license file.
UNSUPPORTED FEATURE request: <i>feature</i> by <i>user</i>	The <i>user</i> has requested a feature that this vendor daemon does not support. This can happen for a number of reasons: the license file is bad, the feature has expired, or the daemon is accessing the wrong license file.
Unknown host: <i>hostname</i>	The hostname specified on a <i>SERVER</i> line in the license file does not exist in the network database.

NO DAEMON lines, exiting	The license daemon logs this message if there are no DAEMON lines in the license file. Since there are no vendor daemons to start, there is nothing to do.
NO DAEMON line for name	A vendor daemon logs this error if it cannot find its own DAEMON name in the license file.

Daemon Software Error Messages

select: message	An error in a select system call was detected.
Server exiting	The server is exiting. This is normally due to an error.

Technical Support and Professional Services

Visit the following sections of the National Instruments Web site at ni.com for technical support and professional services:

- **Support**—Online technical support resources include the following:
 - **Self-Help Resources**—For immediate answers and solutions, visit our extensive library of technical support resources available in English, Japanese, and Spanish at ni.com/support. These resources are available for most products at no cost to registered users and include software drivers and updates, a KnowledgeBase, product manuals, step-by-step troubleshooting wizards, conformity documentation, example code, tutorials and application notes, instrument drivers, discussion forums, a measurement glossary, and so on.
 - **Assisted Support Options**—Contact NI engineers and other measurement and automation professionals by visiting ni.com/support. Our online system helps you define your question and connects you to the experts by phone, discussion forum, or email.
- **Training**—Visit ni.com/training for self-paced tutorials, videos, and interactive CDs. You also can register for instructor-led, hands-on courses at locations around the world.
- **System Integration**—If you have time constraints, limited in-house technical resources, or other project challenges, NI Alliance Program members can help. To learn more, call your local NI office or visit ni.com/alliance.

If you searched ni.com and could not find the answers you need, contact your local office or NI corporate headquarters. Phone numbers for our worldwide offices are listed at the front of this manual. You also can visit the Worldwide Offices section of ni.com/niglobal to access the branch office Web sites, which provide up-to-date contact information, support phone numbers, email addresses, and current events.