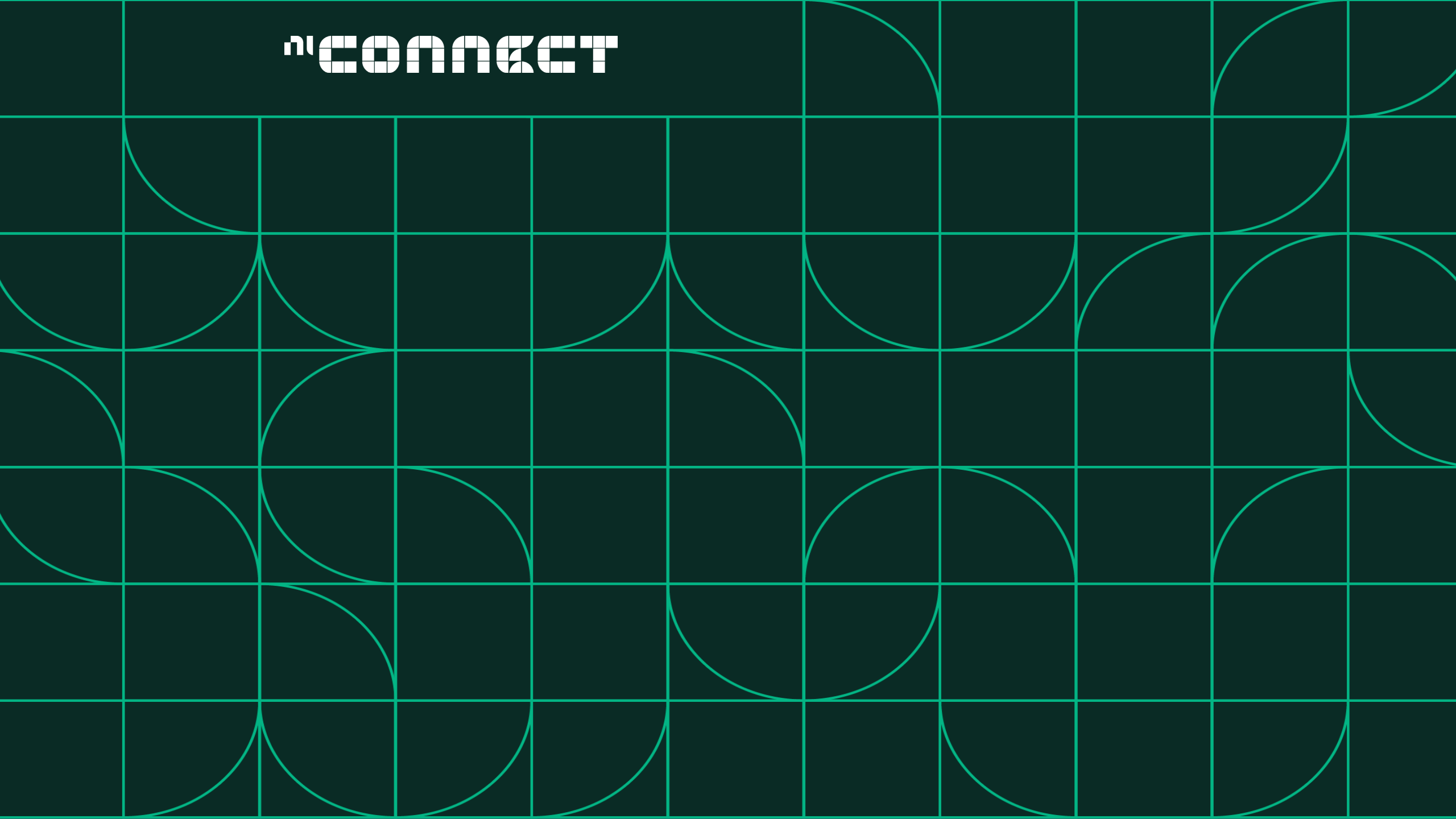


י"ח **connect**



ActiveUptime: Condition Monitoring & Predictive Maintenance For Test Assets & Test Facilities

Andranik Meliqsetyan

Service Engineering

Lead Architect for ActiveUptime

ActiveUptime™



Eliminate
unplanned
downtime



Maximize
total
uptime



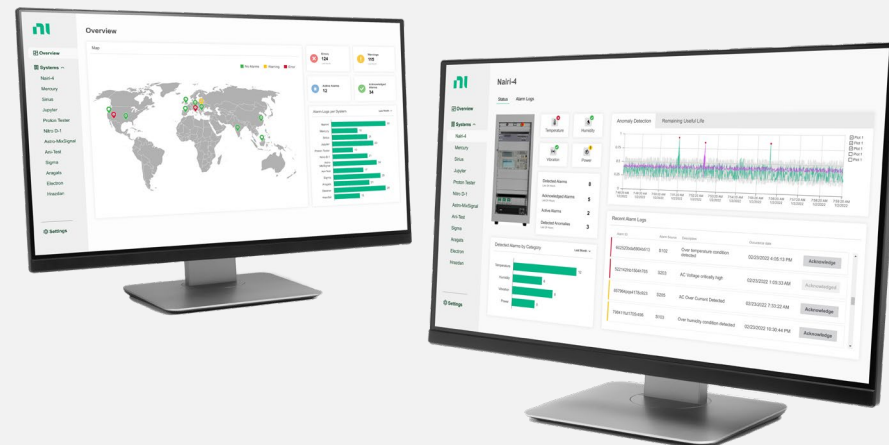
Optimize
operational
costs

Agenda

- ActiveUptime™ Overview
- Maintenance Maturity Model
- Condition Based Monitoring and Predictive Maintenance
- State-of-the-Art Smart Sensors
- Using Data for CbM and PdM
- Corrective Actions

ActiveUptime™

Condition Monitoring and Predictive Maintenance of Test Assets and Test Facilities



Eliminate unplanned
downtime

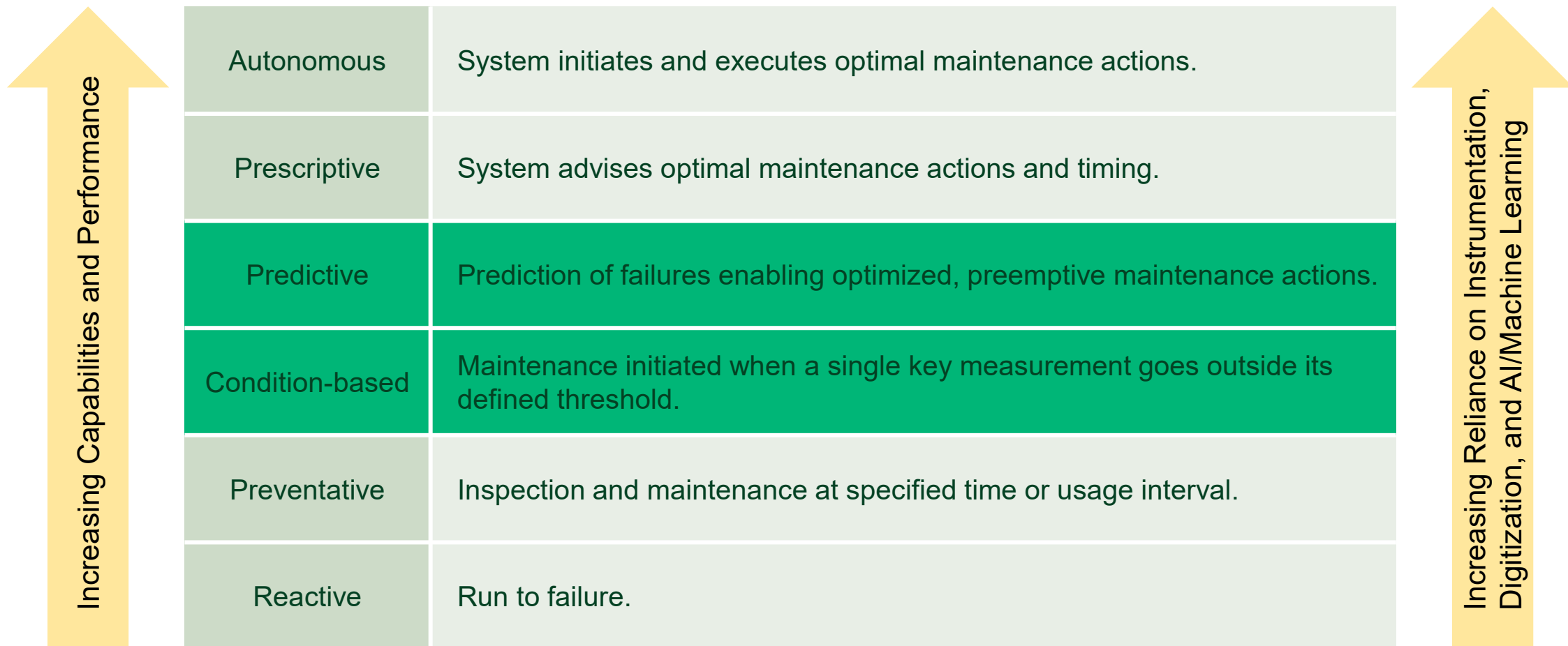


Maximize total
uptime



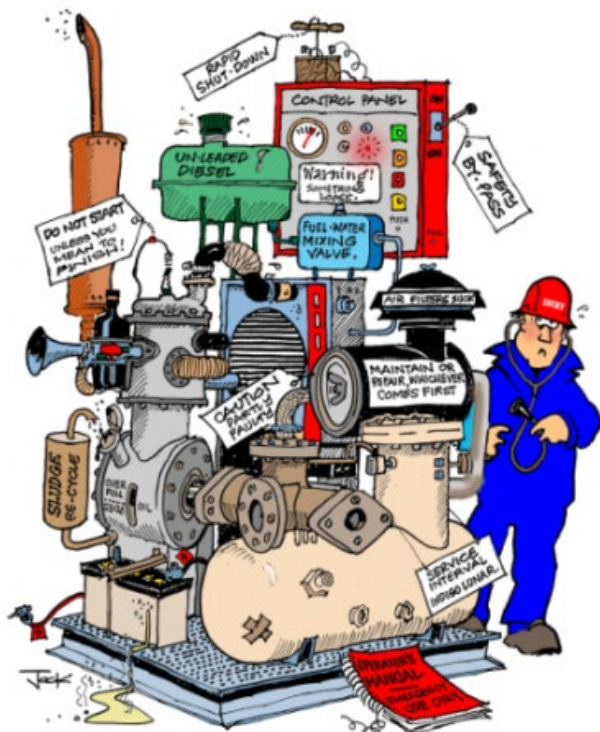
Optimize
operational
costs

Maintenance Maturity Model



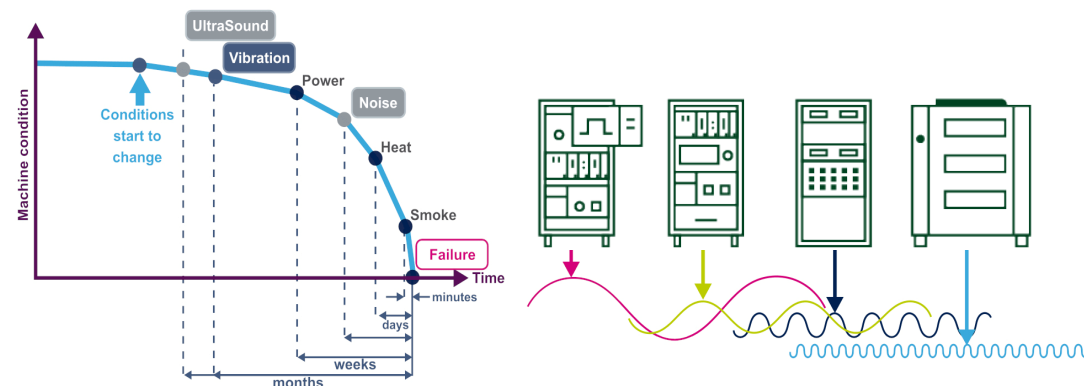
Condition Based Monitoring and Predictive Maintenance

Predictive vs. Condition-Based Maintenance (PdM / CbM)

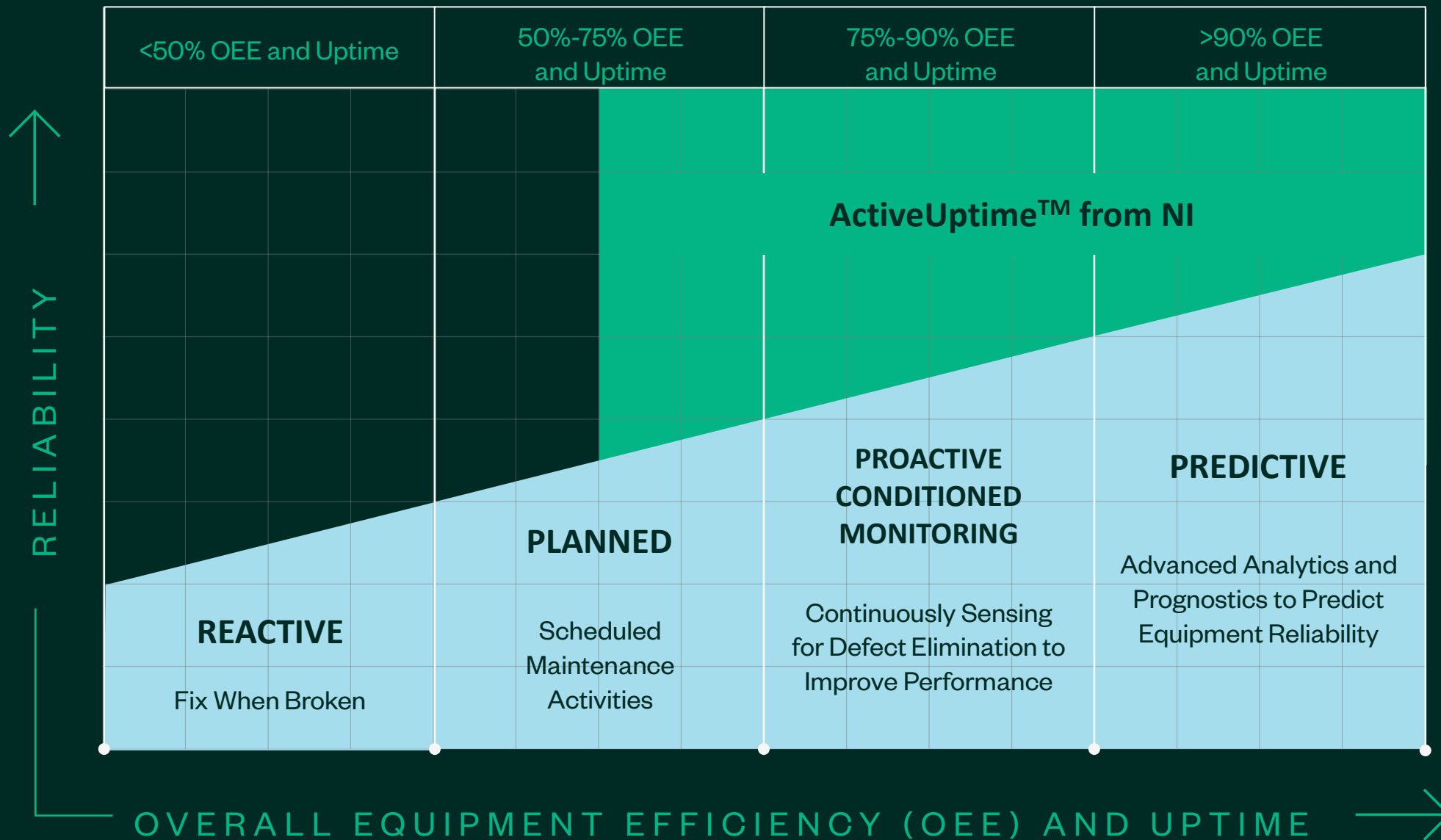


TRADITIONAL CONDITION MONITORING

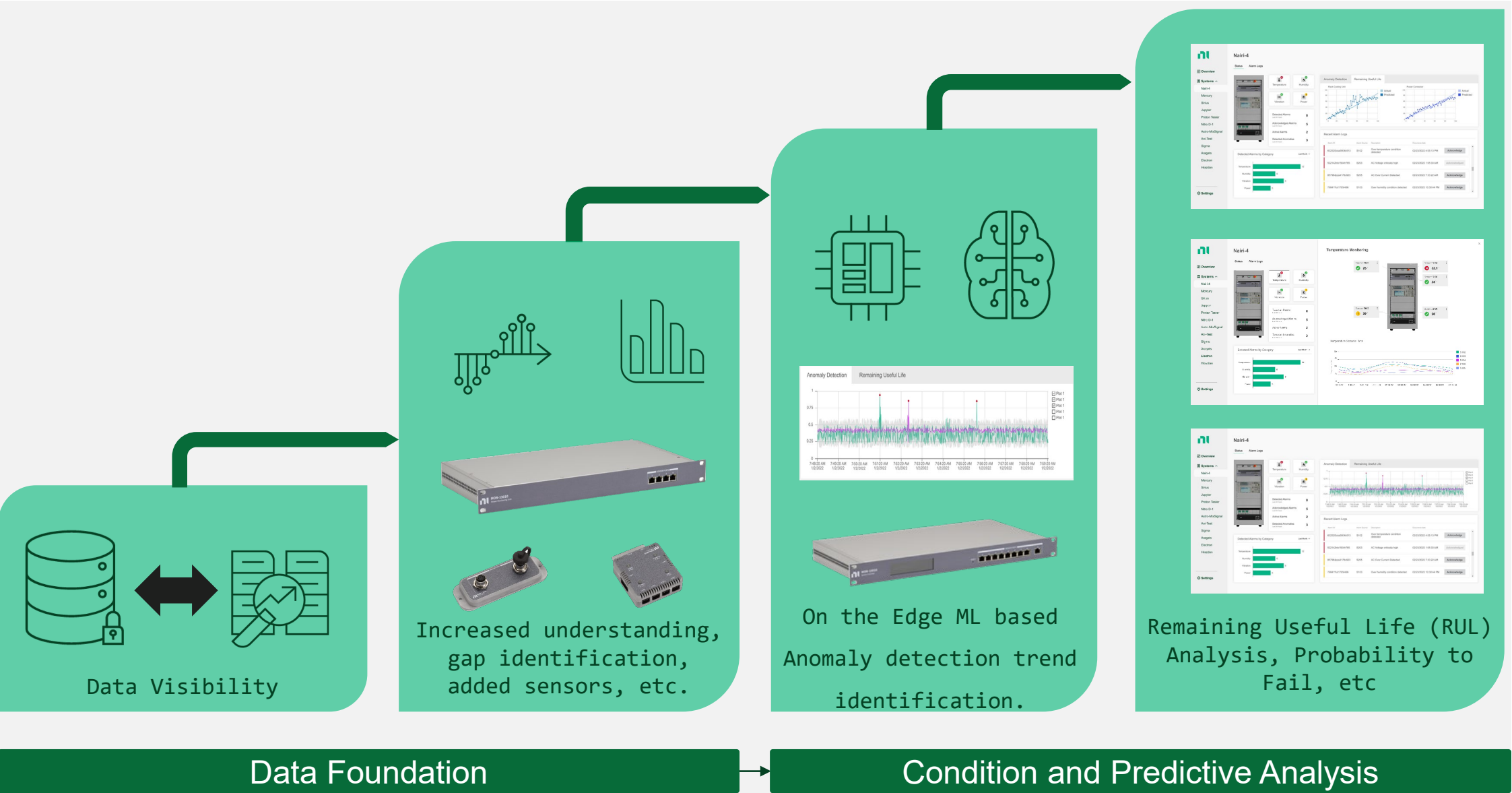
Condition-based maintenance (CbM) is work that is performed at the exact moment when measured parameters reach unacceptable levels.



Predictive maintenance (PdM) is a next evaluation of condition-based maintenance that monitors the condition of assets using smart sensor devices. These smart sensor devices supply data in real-time and process, which is used to predict when the asset will require maintenance and prevent equipment failure.

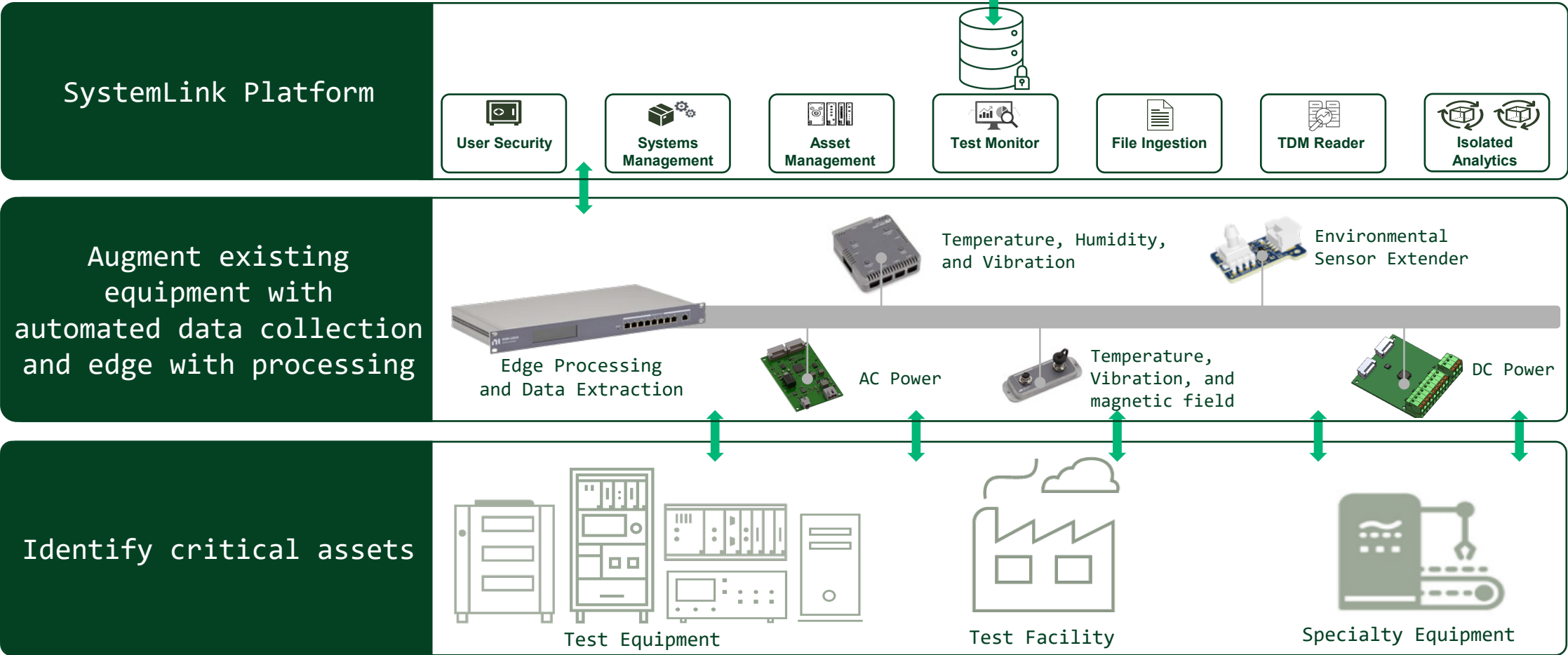
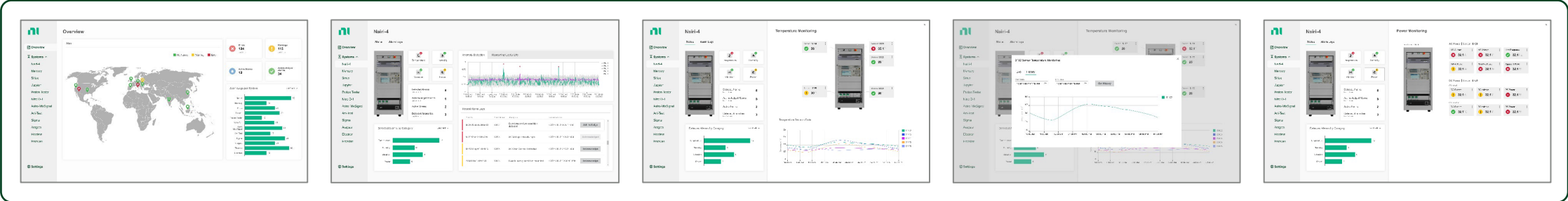


Enabling Condition and Predictive Maintenance with NI

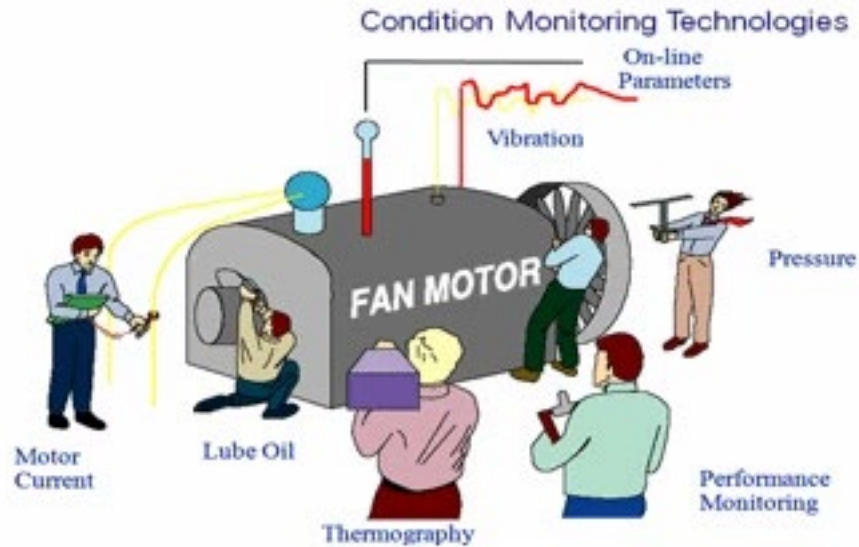




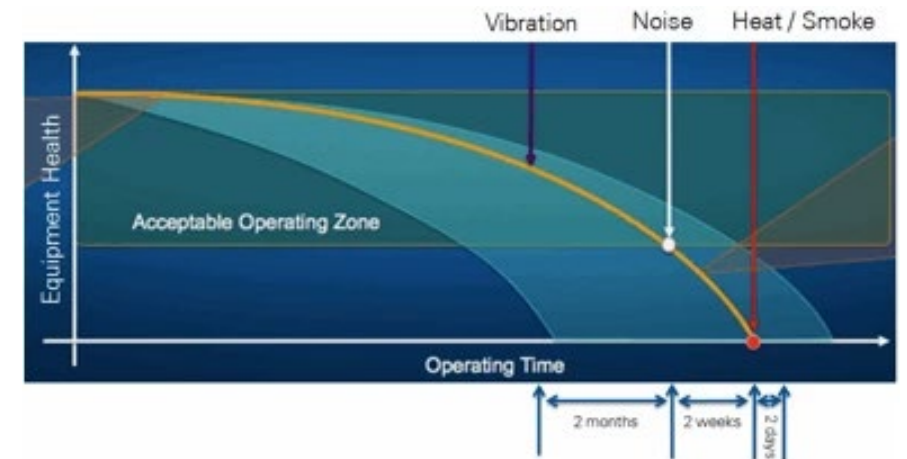
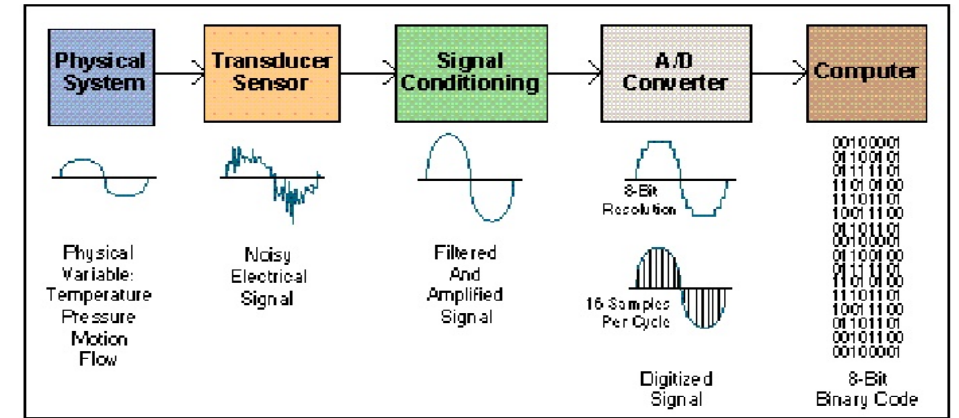
Proactive Conditioned Monitoring Using MaaS from NI



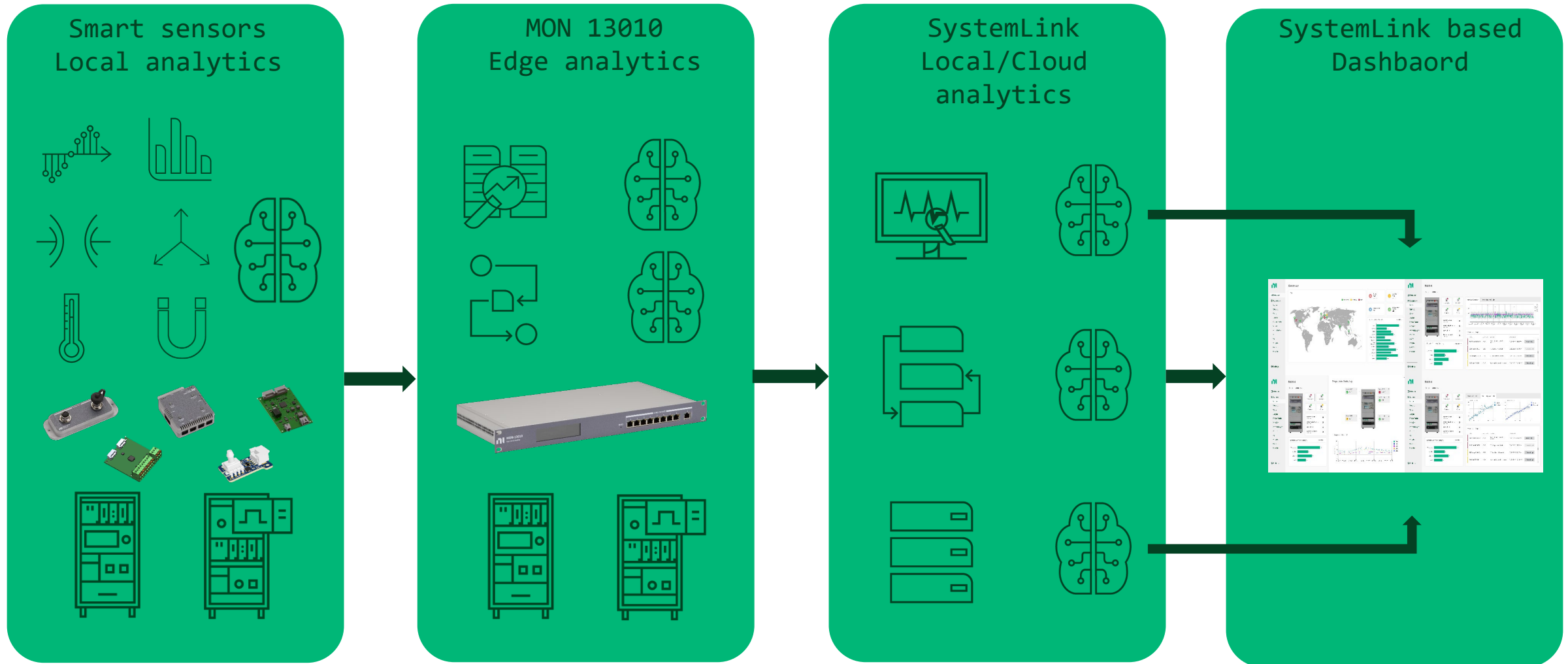
Conventional CbM and PdM Solutions



DAQ BLOCK DIAGRAM

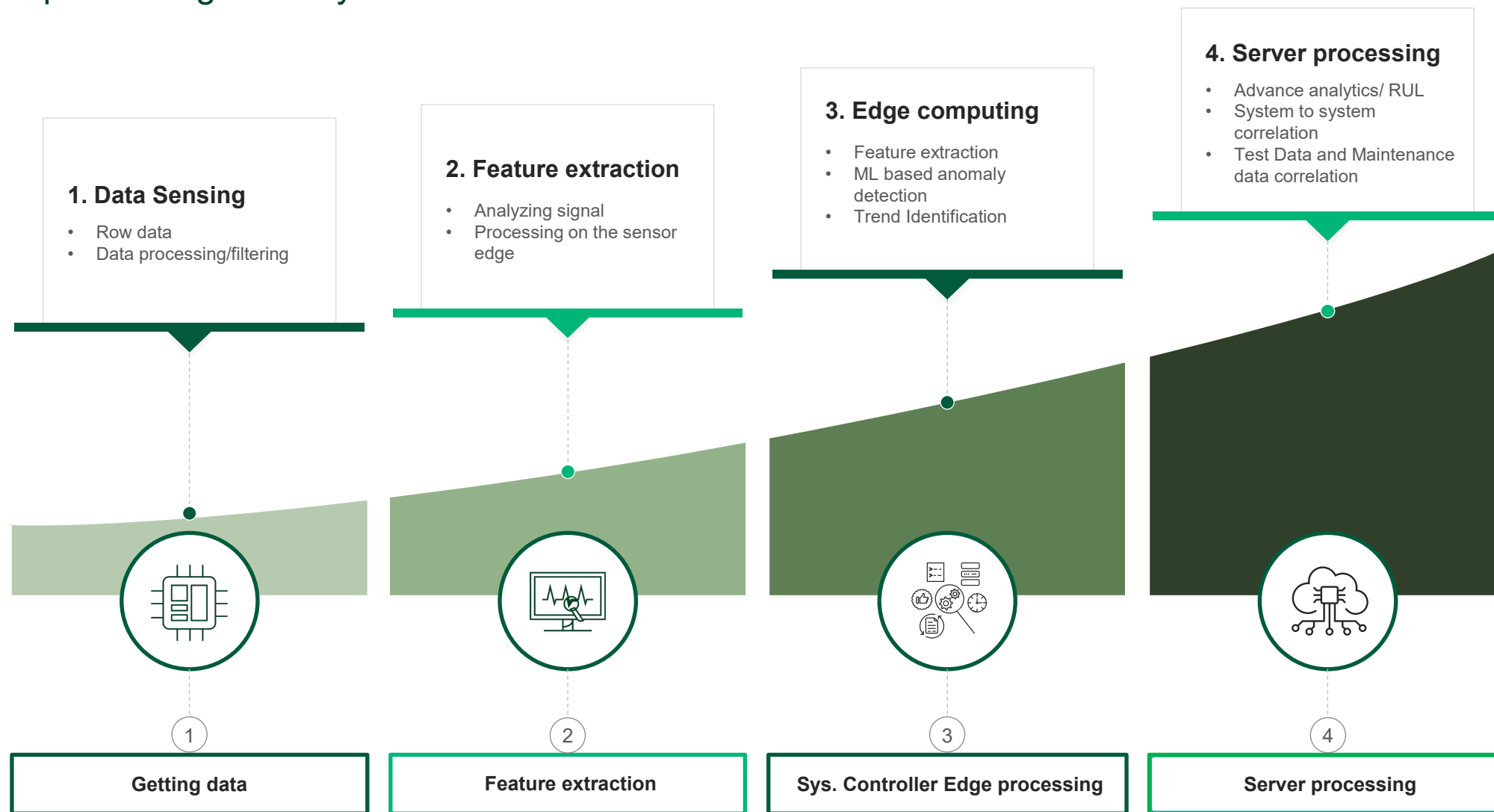


ActiveUptime State-of-the-Art Smart Sensors



ni Using Data for CbM & PdM

Data processing maturity levels



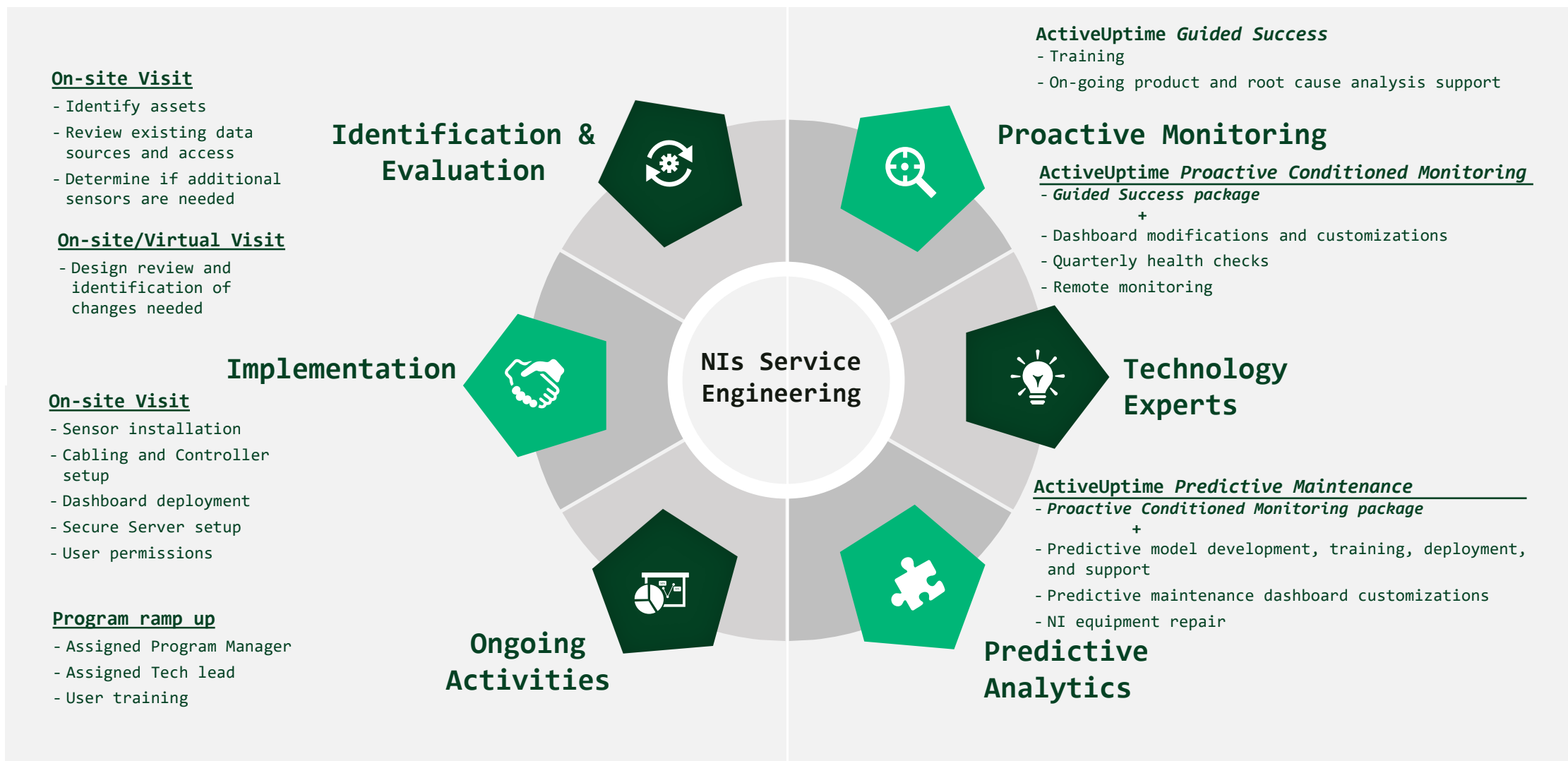
Using AR for Corrective Actions



Benefits of using AR for Maintenance

- Quick visual demonstration of the complex assembly
- Step by step visualization capability
- Ability to add appropriate information along with the animation
- Significantly to increase the first-time fix rate
- Reducing iatrogenic failure rate
- Intuitive rework instruction for complex subassemblies
- Allowing junior technicians to perform complex reworks
- Customer self-service rework instructions

From Evaluation through Ongoing Activities



Check out ActiveUptime DEMO
at the Design to Test Pavilion !

Thanks!