

# Maximizing Test Value with Centralized Orchestration

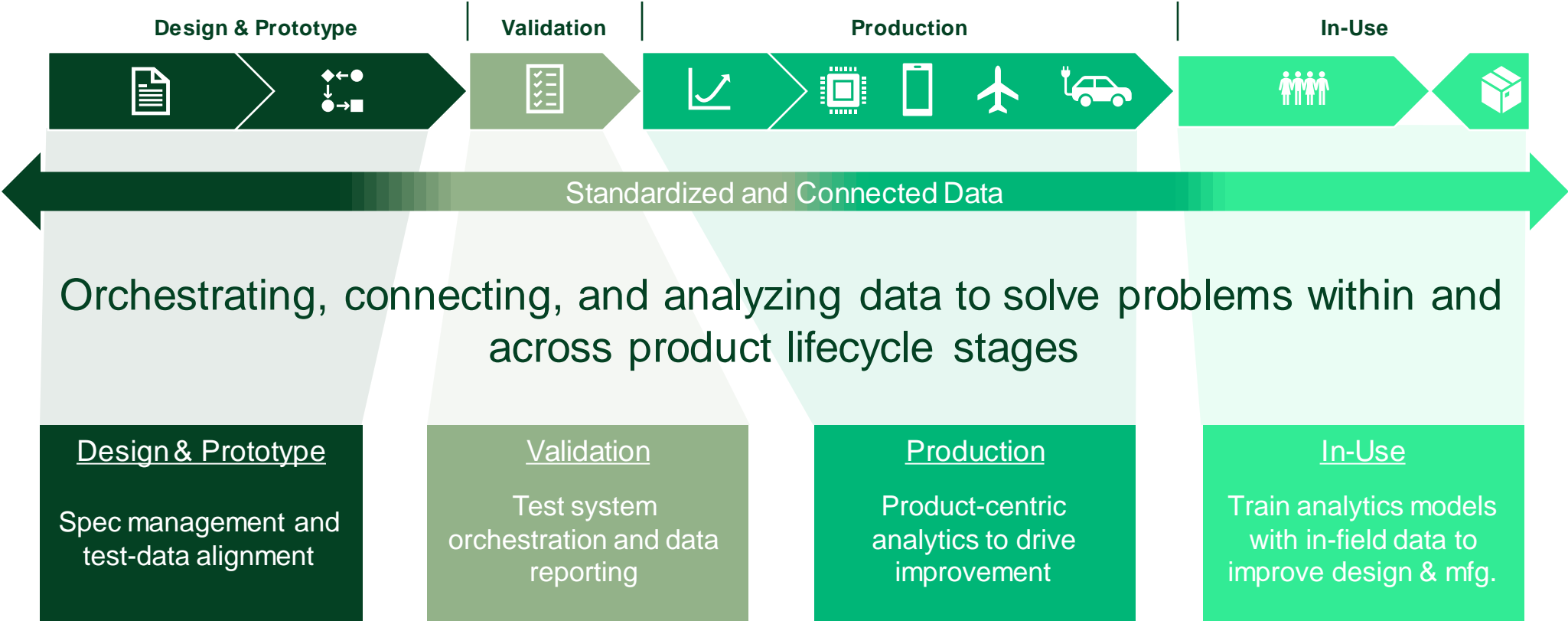
Session time

Josh Prewitt

SystemLink Product Manager

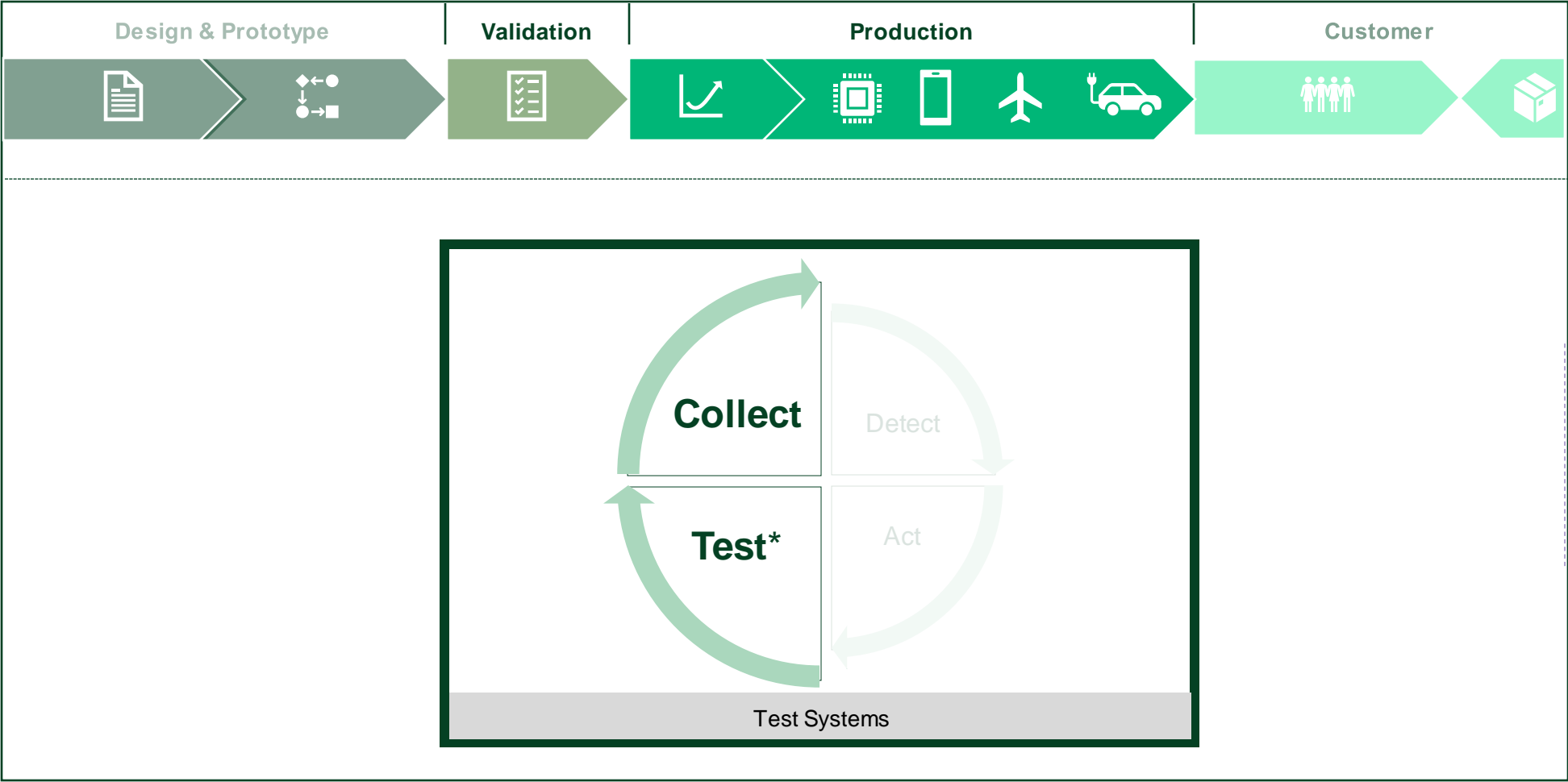


# NI Lifecycle Solutions





# Test and Data Solutions: Validation and Production



\*Compatible with Test HW and Systems from **any Vendor**

# Workflow for Test Organizations

## Pre-Test

Prepare and Manage Test Systems

### Major Tasks:

- Procure Test Assets
- Software Configuration and Setup

### Concerns:

- Increasing # of Systems
- Time and HC spent on Pre-Test
- Maintenance and Calibrations

## Test

Execution of Tests

### Major Tasks:

- Collect and Store Test Data

### Concerns:

- Monitor Test Progress
- Monitor System Health

## Post-Test

Analysis and Reporting of Test Data

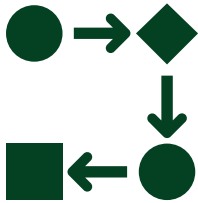
### Major Tasks:

- Process and Report Data
- Analyze Data for Insights

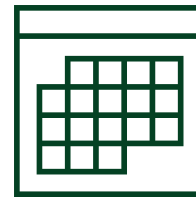
### Concerns:

- Location and Access to Data
- Consistency and Usability of Data
- Timely Analysis for Output

# Pressures and Dynamics Affecting Test Organizations



Increasing  
Product Complexity



Schedule and  
Time-to-Market Pressure



Operational  
Efficiency

1



**Reduce Overhead**  
of Managing Complex  
Test Configurations

2



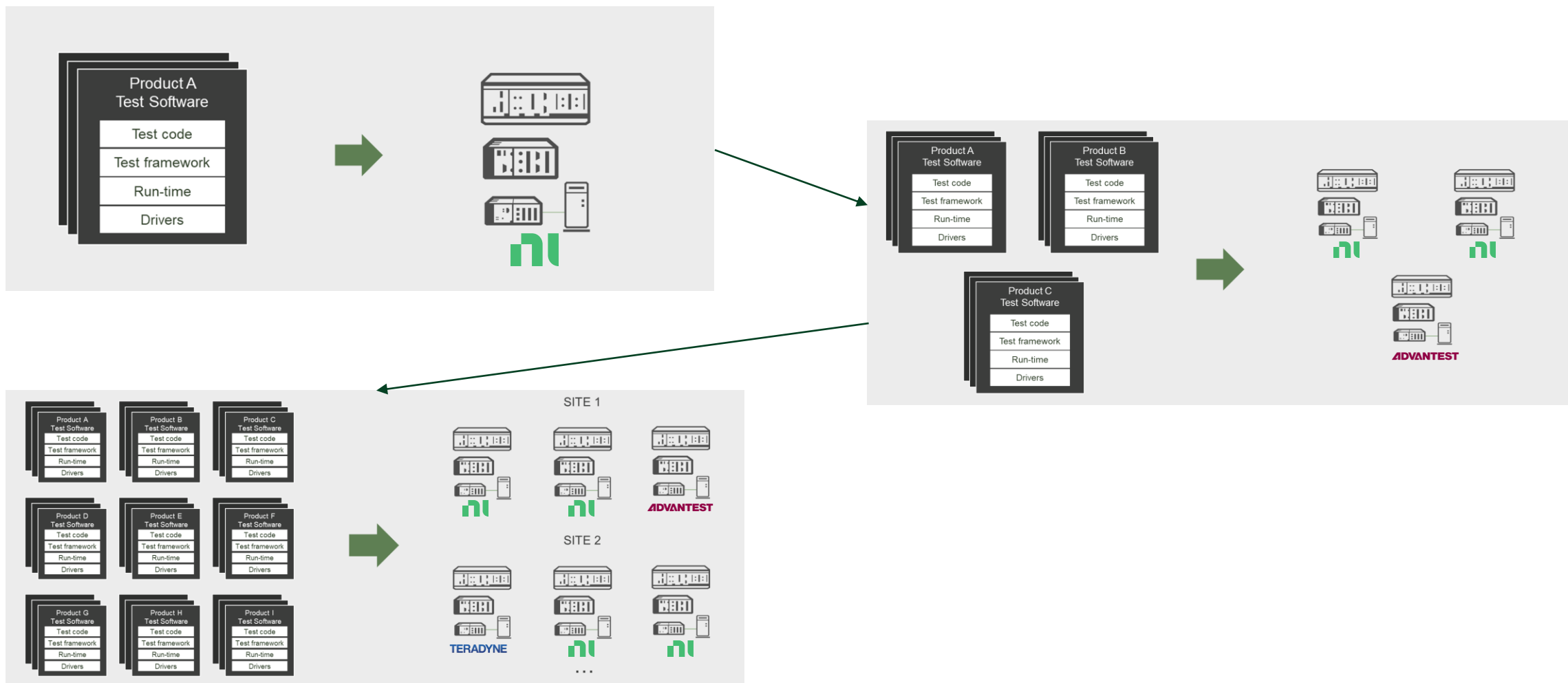
**Optimize Expenditure**  
with Insights on Operational  
Metrics

3

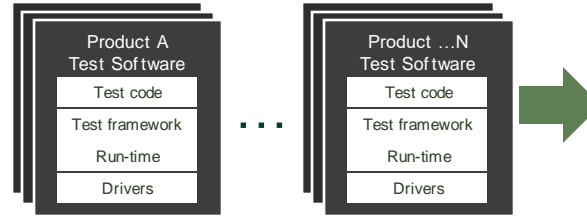


**Decrease Time**  
for Test Data Mining and  
Analysis

# Managing Systems and Configurations at Scale



# Manage Complexity with SystemLink



## Central SystemLink System Management

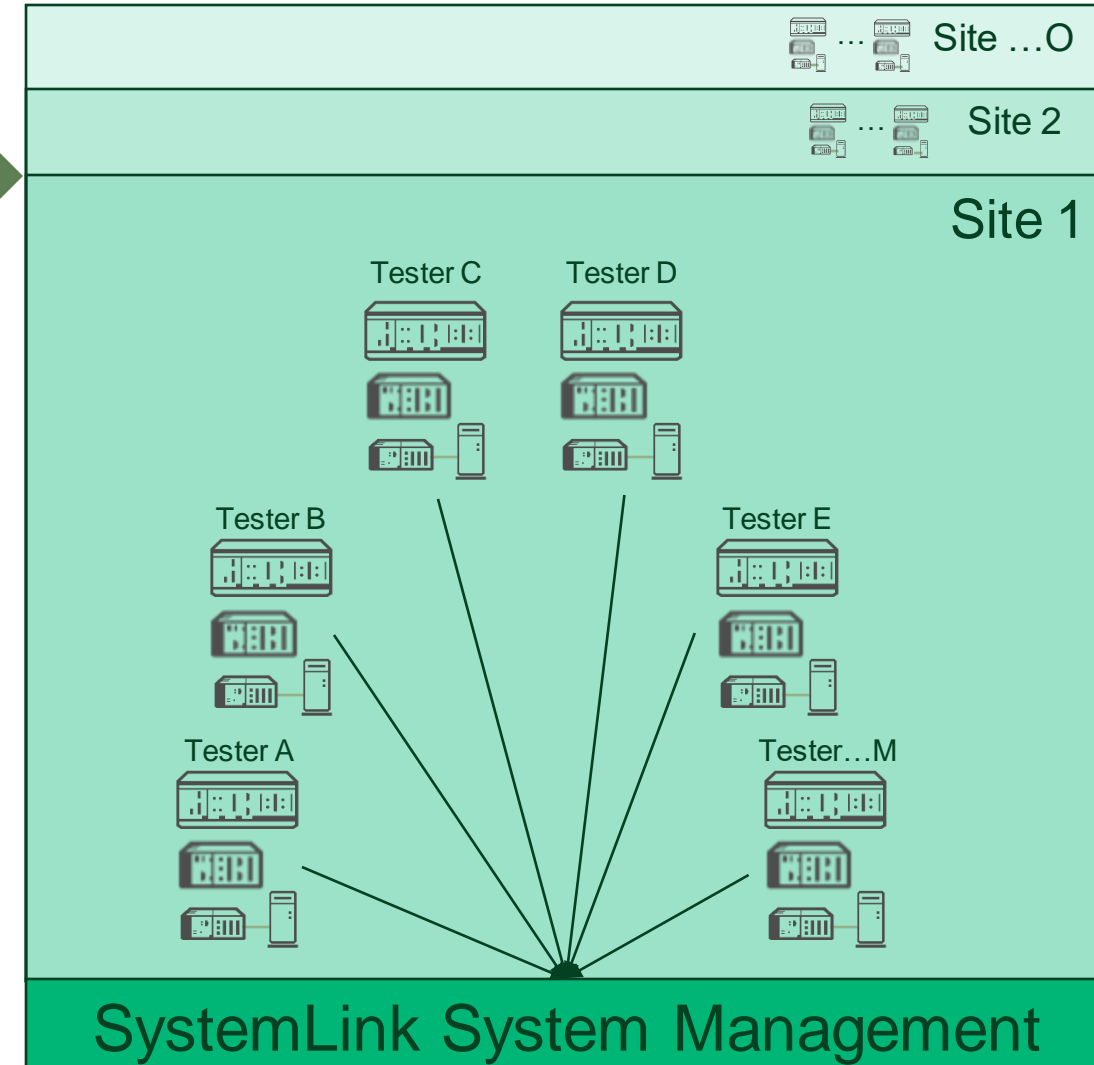
Manage all T&M systems,  
From validation through production

## Simplify **M x N x O** Management Complexity

**M**: Centrally manage systems within each lab

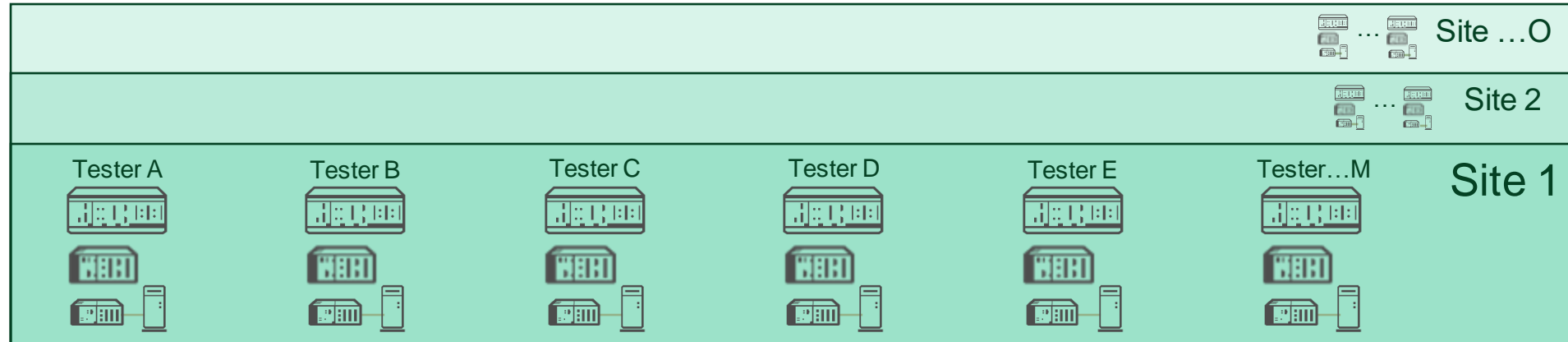
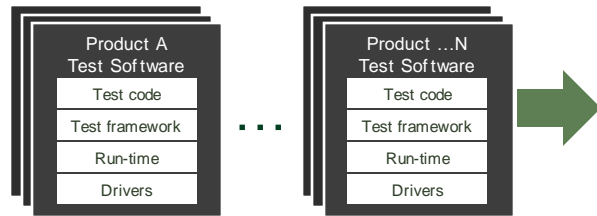
**N**: Save test profiles and configurations for each product

**O**: Standardize processes across sites





# SystemLink Capabilities



## SystemLink System Management

### Scalable Management of Assets and Devices



Discover and  
connect to available  
HW



Search and locate  
specific asset and  
device types

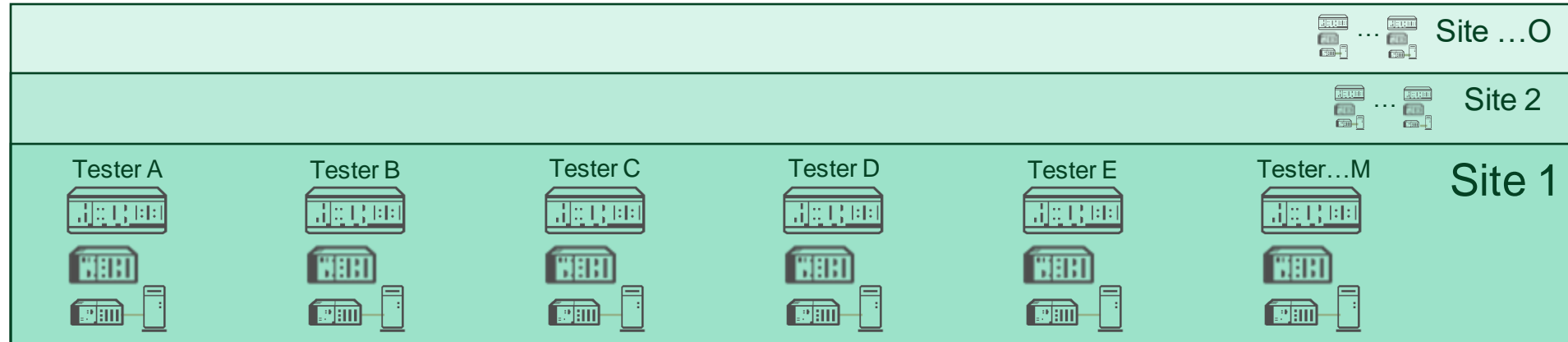
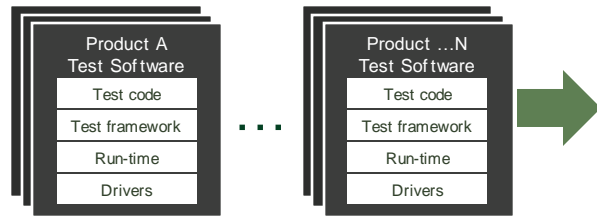


Track calibration due  
dates and history



Execute remote  
diagnostics

# SystemLink Capabilities



## SystemLink System Management

Maximize Tester Utility and Uptime



Monitor system  
health metrics with  
in-box services



Configure health  
alarms and  
notifications

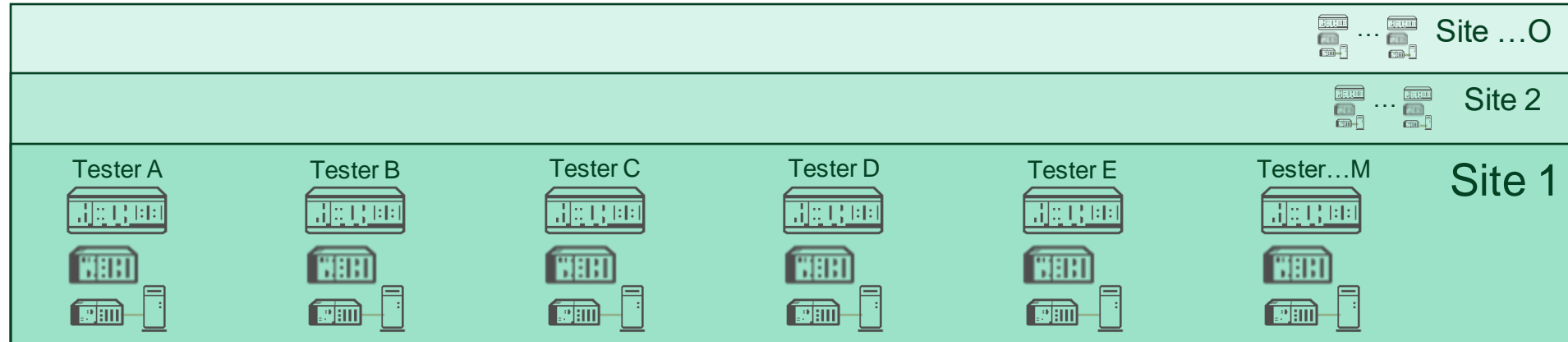
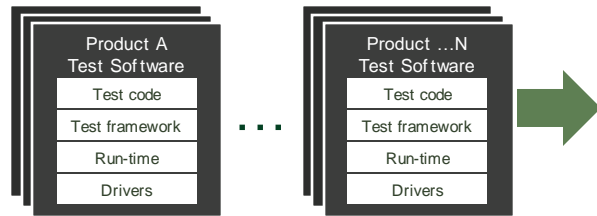


Monitor real-time  
data from  
dashboards



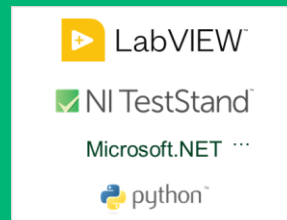
Track system  
utilization and plan  
asset procurement

# SystemLink Capabilities



## SystemLink System Management

### Simple SW Configuration Deployment



Leverage existing  
tools to package test  
application



Define system  
“states” for easily  
config. replication



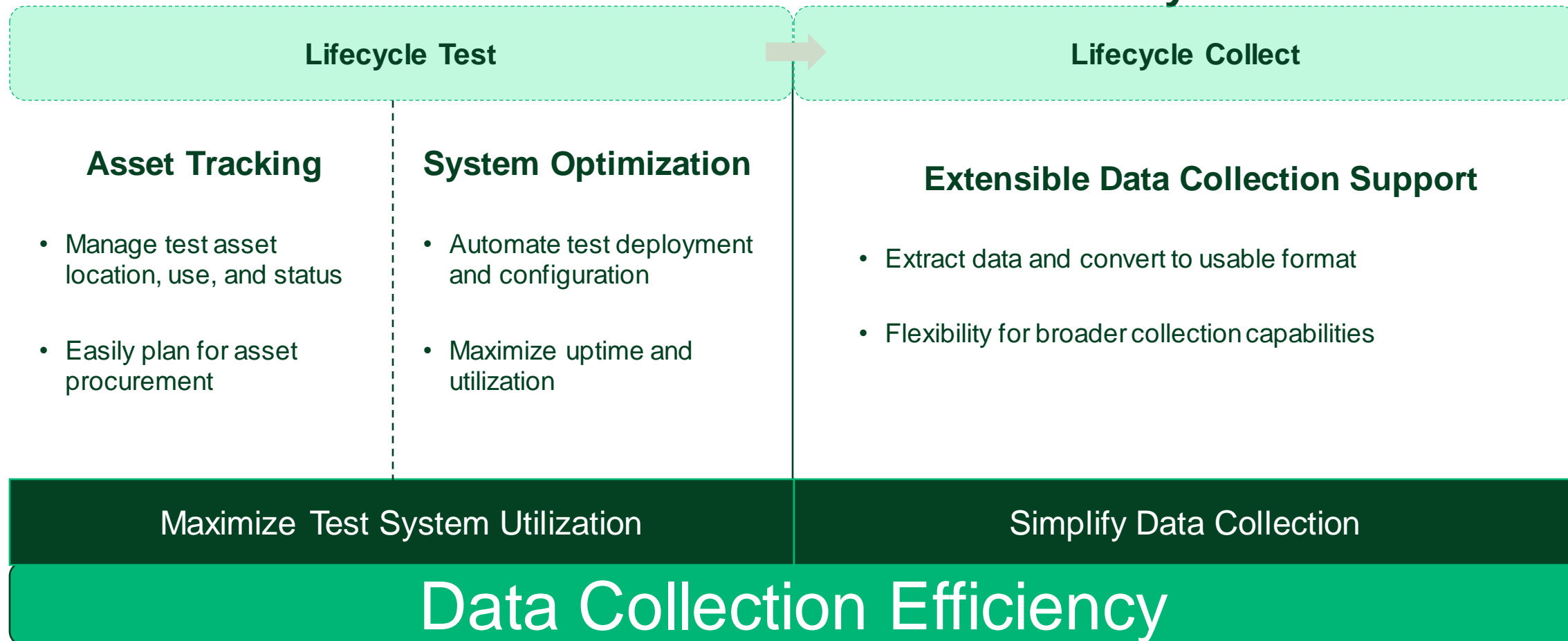
Update SW  
packages by  
component



Remote SW install,  
upgrade, and  
version control

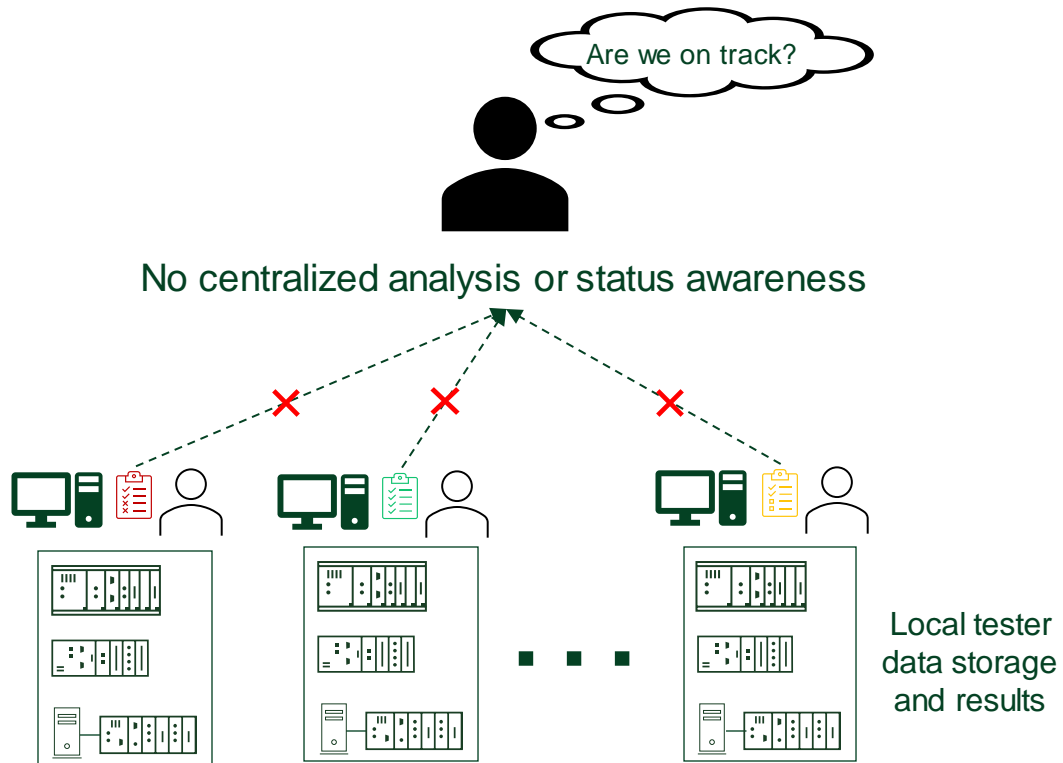
# Target Critical Mass of Test Data

## Maximize data collection efficiency



# Data Visibility and Utility

## Data Locale and Review



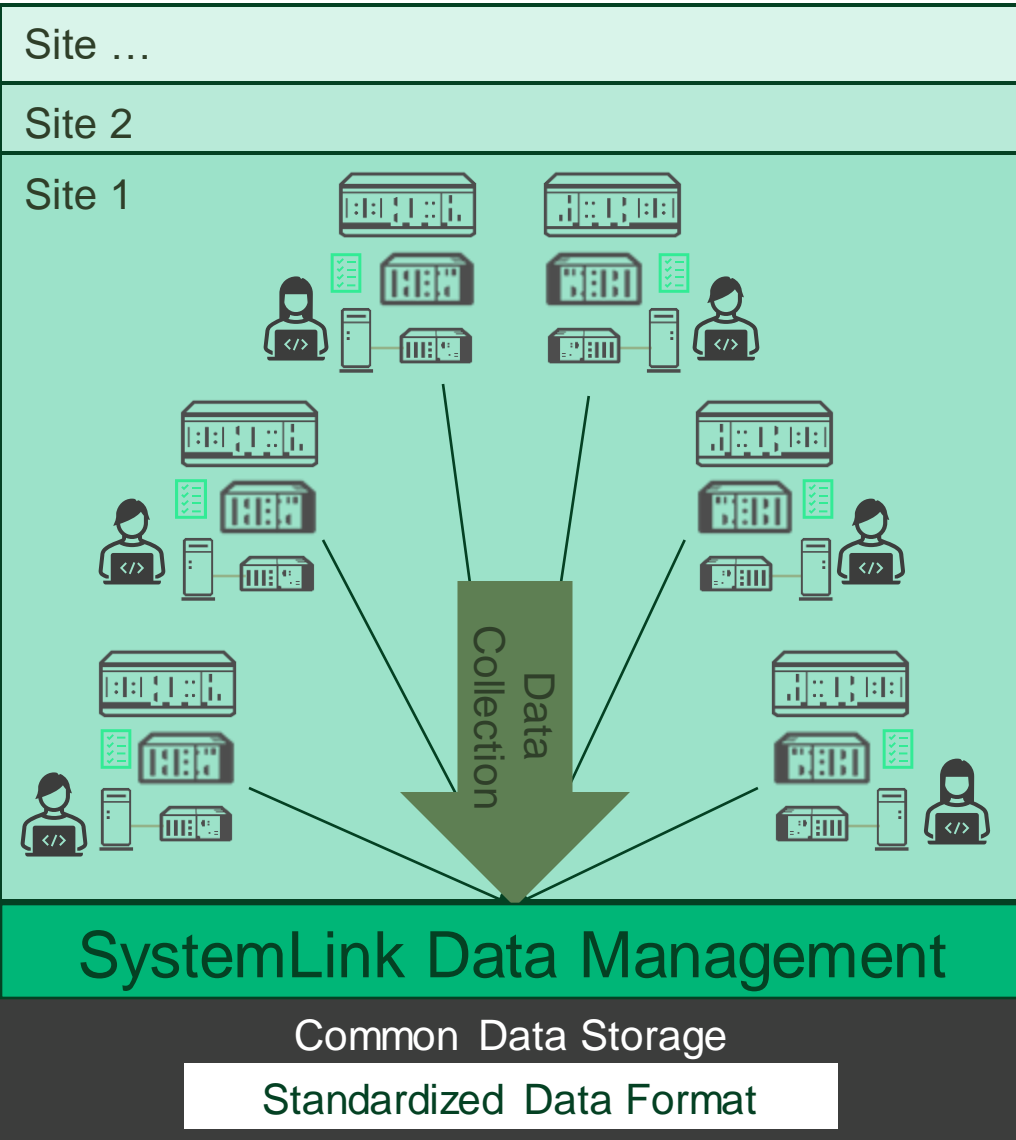
## The Inconsistent Data Problem

Multiple Sources and Formats	Metadata	Units	Errors
Raw Data A	Diesel	Pa	100/100 pts
Raw Data B	DIESEL	psi	100/100 pts
Raw Data B	d	bar	76/100 pts
Historical Data	Engine_d	Torr	100/100 pts

Inconsistent Data = Inconsistent Analysis

Time and resources to process data for analysis and reporting

# Transform Data Management with SystemLink



## Central SystemLink Data Management

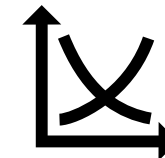
Manage all T&M data incoming from *any system vendor*

## Simplify Data Management Complexity

Unify data to a common storage location and format

Increase visibility, decrease manual data activities

Data Search, Visualization and Reporting

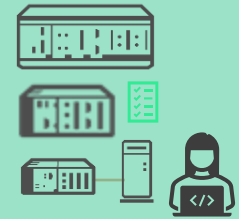
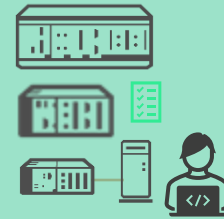
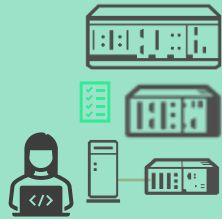
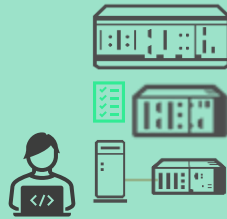
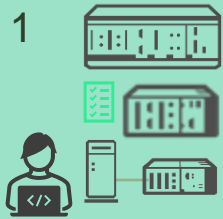


# SystemLink Data Capabilities

Site ...

Site 2

Site 1



## SystemLink Data Management

### Simplify Data Tracking and Ingest



Automatic upload to  
common storage  
location



Extract and  
transform data to a  
common format



Real-time  
dashboards of  
project progress



Monitor test activity  
and results

# SystemLink Data Capabilities

Site ...

Site 2

Site 1



## SystemLink Data Management

### Streamline Data Visualizations and Reporting



Easily search data  
for specific results



Visualize and  
analyze parametric  
data



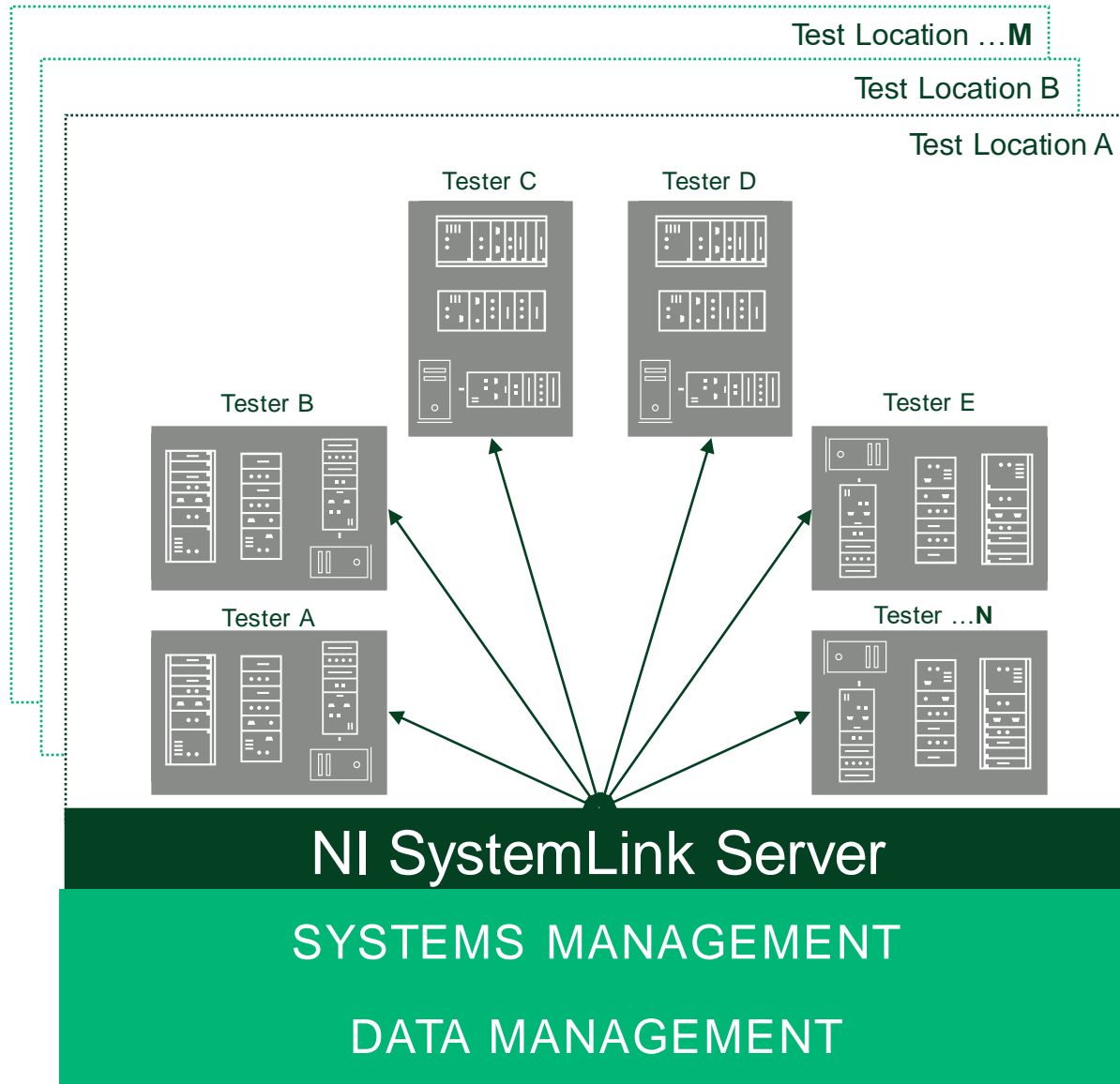
Automatic report  
generation



Common toolset  
across test  
organization



# ni Connect and Automate Test Operations with SystemLink



Simplify management by connecting data from all testers and locations

Centrally manage all T&M systems, from validation through production

Collect and standardize test data for storage, visualization, analysis, and reporting.

## Benefits

- ✓ Monitor system health, utilization, & compliance
- ✓ Easier asset planning and administration
- ✓ Data visualization and reporting
- ✓ Accelerate data-driven decisions about products



# An NI Platform for Lab Efficiency

## Pre-Test

Prepare and Manage Test Systems

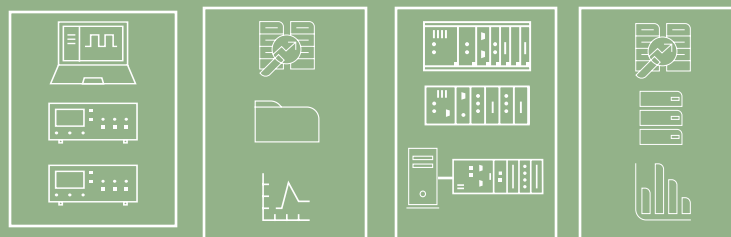
- Review System Utilization
- Deploy Test SW Configurations
- Plan Test Asset Procurement

### Advantages:

**More tests-per-system**

## Test


Automation and Execution of Tests




Traditional NI or Third-Party T&M Systems

Standardize and Automate



TEST AUTOMATION  
 TestStand™

TEST CREATION  
 LabVIEW™

## Post-Test

Analysis and Reporting of Test Data

- Collect data from all testers
- Process into consistent formats
- Analyze for insights

### Advantages:

**Meet project schedules**

Allow Test Engineers to Focus on Test Activities



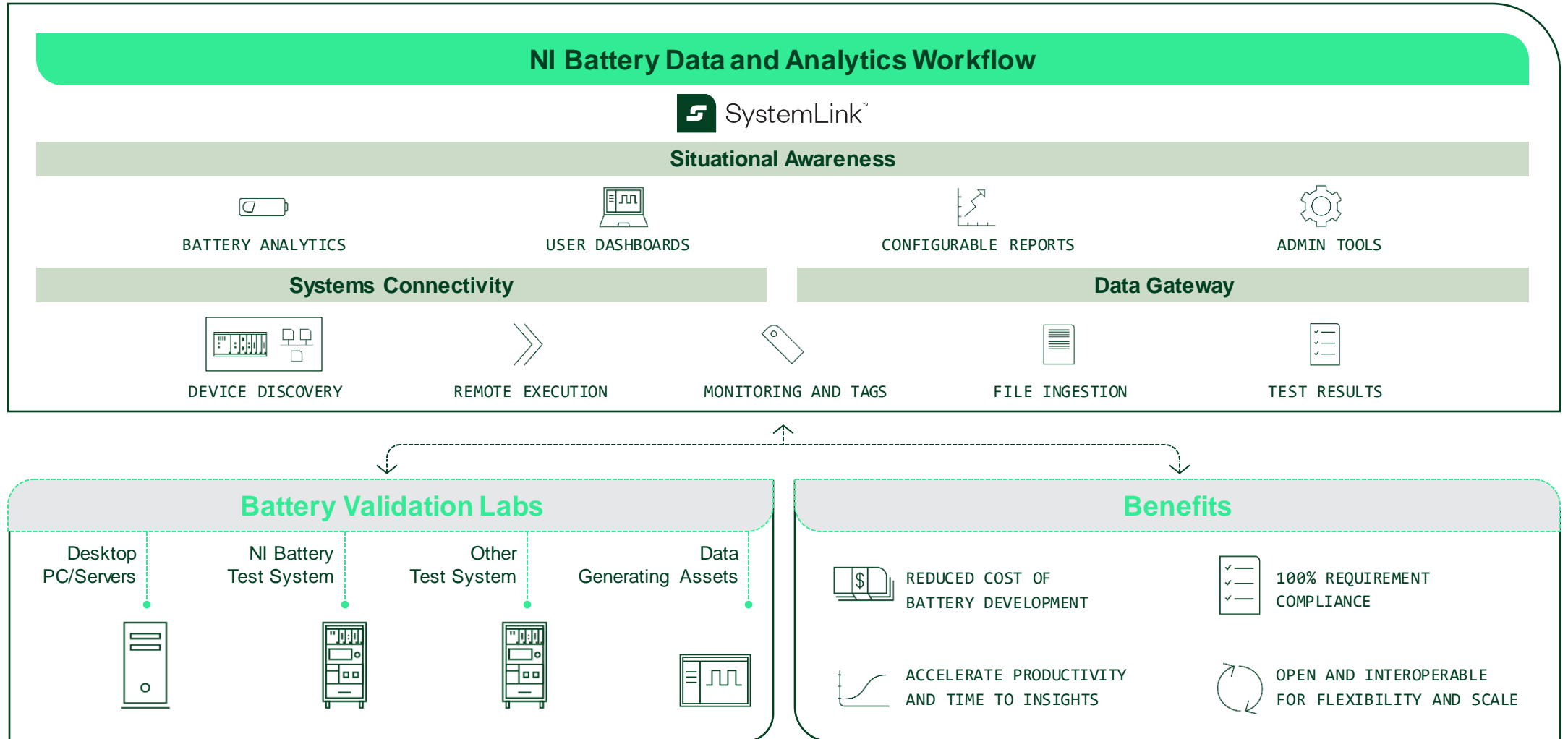
System  
Management

# SystemLink

Data  
Management



# NI Battery Analytics Applications for Battery Validation

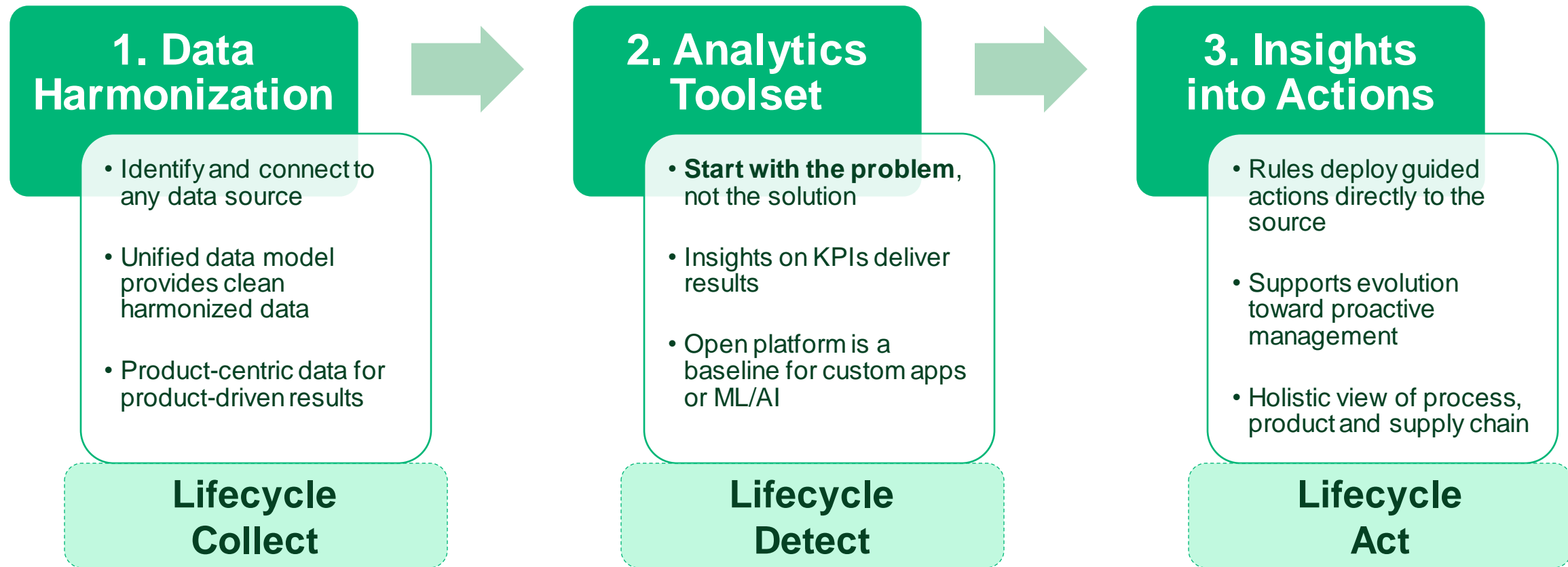


# From Data to Insights

Collect, Detect, and Act



# Next Up: Turning Data into Actions



## Guest Speaker: Analog Devices



National Instruments  
is now NI.