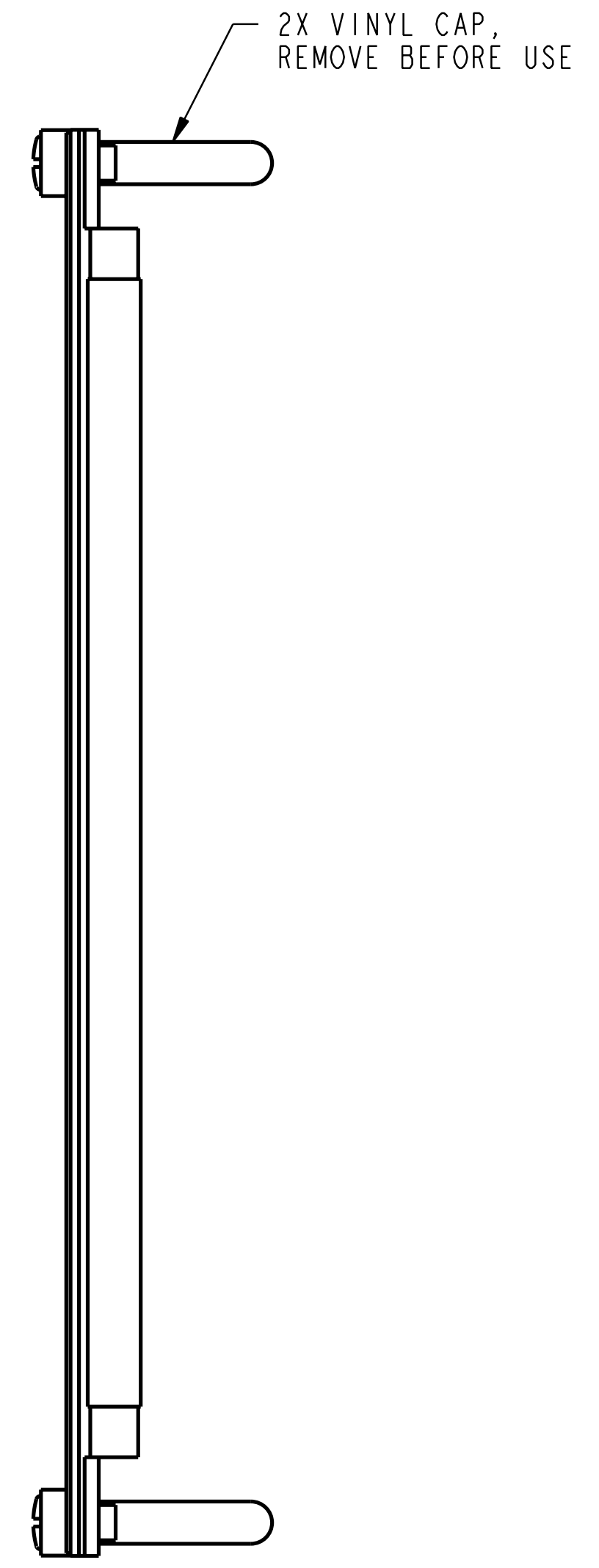
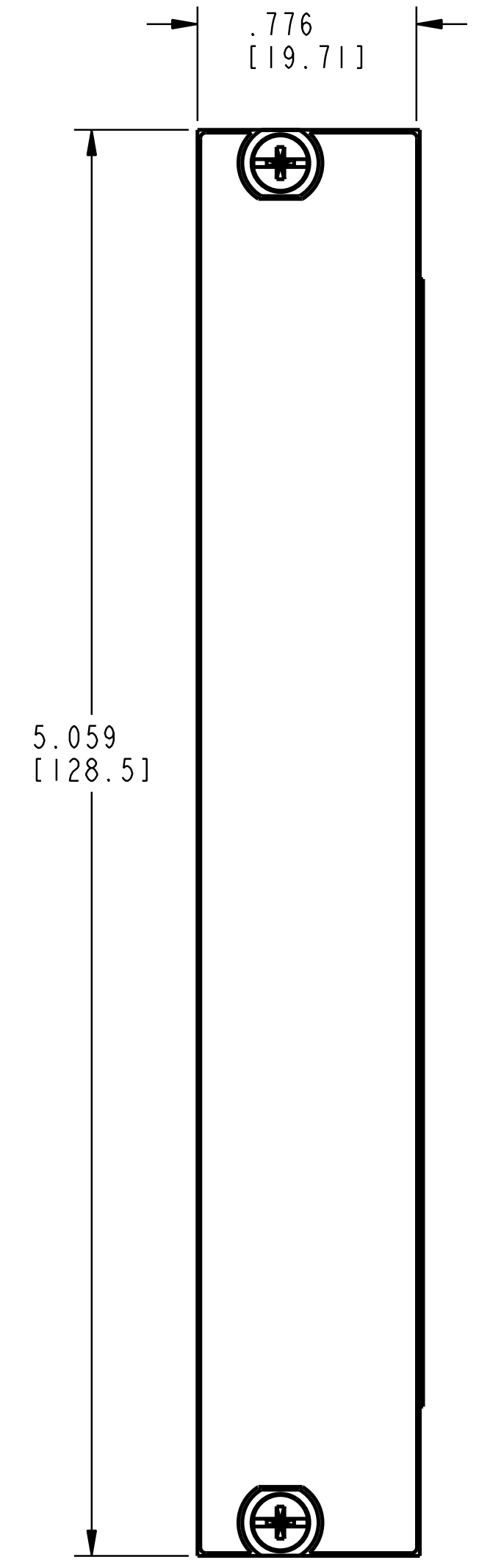
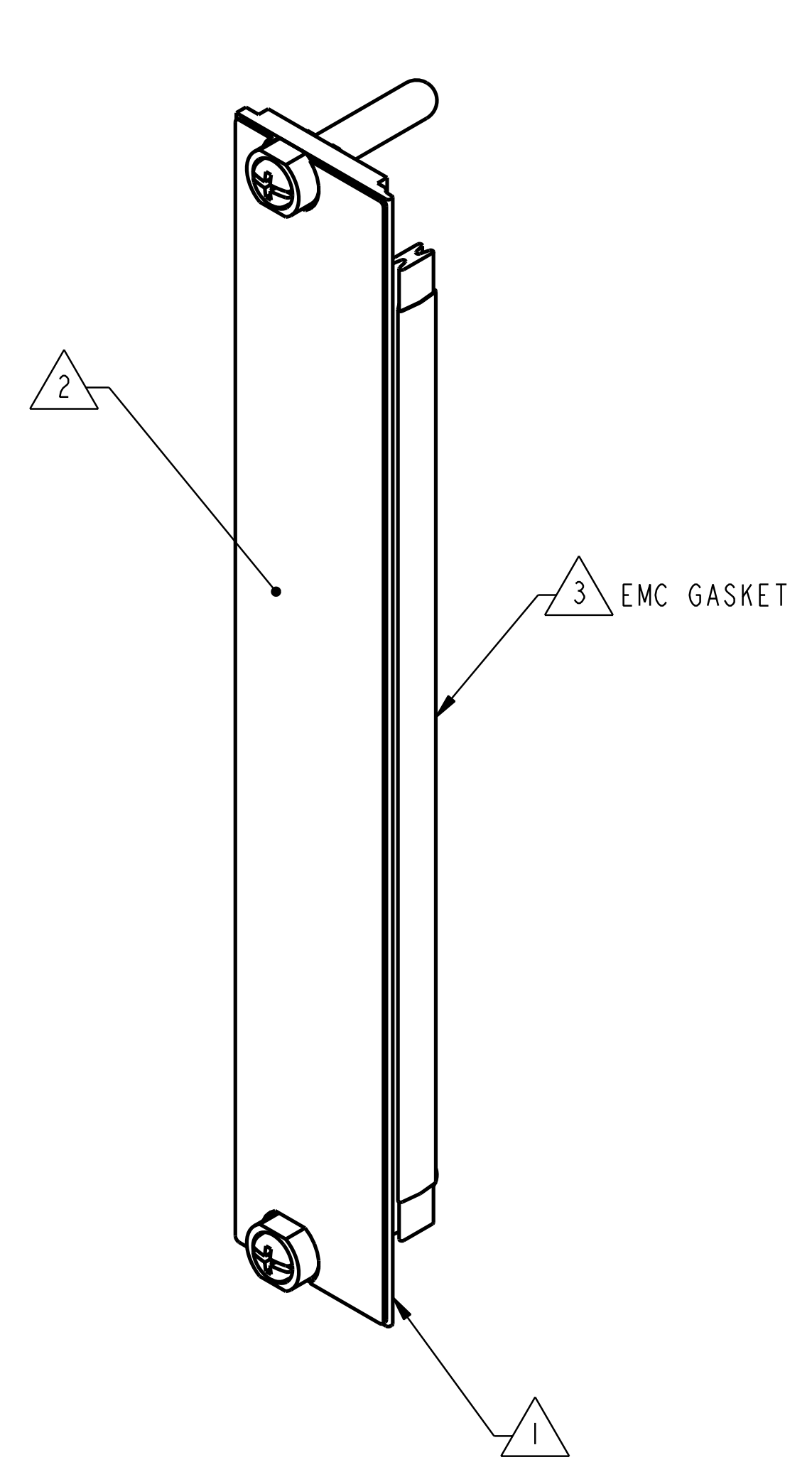
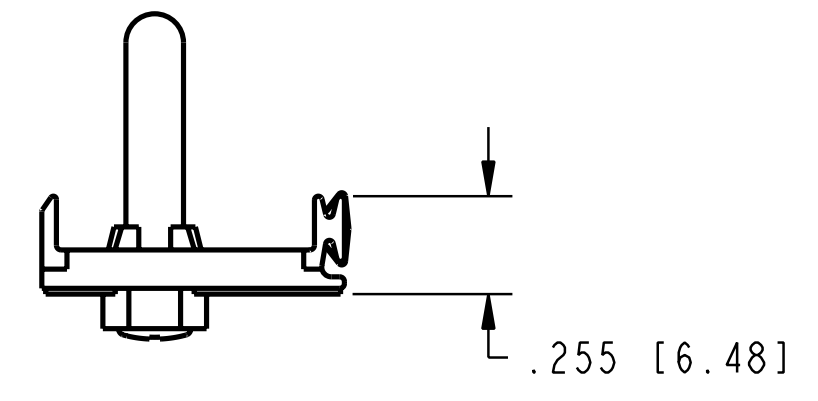


This document contains confidential and proprietary information which is the property of National Instruments Corporation. This proprietary information is supplied to the possessor pursuant to the possessor's agreement to do the following:

1. to maintain this document in confidence;
2. not to reproduce, publish or copy it in whole or in part without written permission; and
3. not to use this document as a basis for the manufacture or sale of goods without written permission.

© COPYRIGHT 2002
NATIONAL INSTRUMENTS CORPORATION. ALL RIGHTS RESERVED.

REVISIONS	
REV	DESCRIPTION
1	REFER TO DATABASE FOR DRAWING STATUS

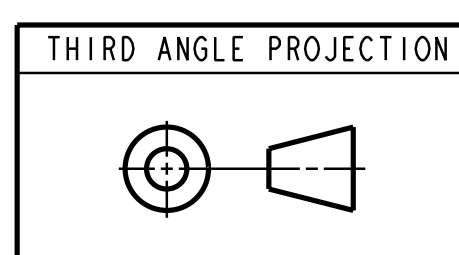


CUSTOMER DRAWING

- 3 BERYLLIUM COPPER, NICKEL PLATED.
- 2 .010 [0.25] THICK VELVET/GLASS POLYCARBONATE OVERLAY WITH .005 [0.13] THICK PERMANENT ACRYLIC ADHESIVE (3M 468MP) NI WHITE PER NI SPECIFICATION 187900A-04.
- 1 6063-T6 ALUMINUM FILLER PANEL WITH MIL-C-5541, CLASS 3, CLEAR, VERTICAL GRAINED CHEM FILM.

NOTES: UNLESS OTHERWISE SPECIFIED.

UNLESS OTHERWISE SPECIFIED DIMENSIONS ARE IN INCHES AND (MILLIMETERS) TOLERANCES ARE: .XX [0.X] ±.01 [0.3] ANGLES: .XXX [0.XX] ±.005 [0.13] ±2° DO NOT SCALE DRAWING	
MATERIAL	FINISH



DESIGN TEAM	
DRAWN D. CROWDER	12/19/02
CHECKER	
MECHANICAL ENGINEER R. BALDWIN	

NATIONAL INSTRUMENTS® AUSTIN, TEXAS	
TITLE FILLER PANEL ASSEMBLY, EMC, PXI, 4HP, 3U	
SIZE CODE IDENT NO DRAWING NO	REV
D 7U296 CD_189426-01	1
SCALE: 2/1	SHEET 1 OF 1

CD-189426-01 | 1