

AL4424

4" Broad Area Linear Array



- 4i** Provides very even illumination along the 100mm length of the light, with controlled “fall off” in the transverse direction.
- 4i** Designed to provide low angle of incidence illumination over a long, wide area.

Ordering Information

Standard Product:
Shipped Next Day

AL4424

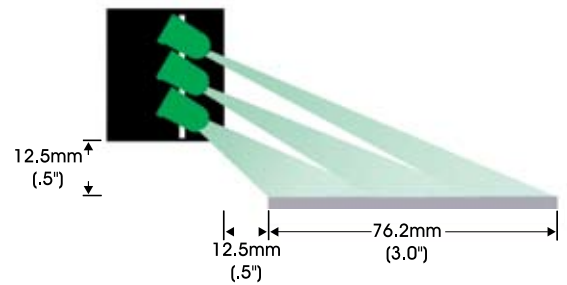
P/N: SL4424-660
Configured for use with Ai
Power Supply

Standard Product Variation:
Shipped Within Two Weeks

AL4424	-	Spectral wavelength XXX	Optional power Compatibility XX
(blue)		470†	12
(green)		520†	24
(yellow)		590	
(orange)		625	
(red)		660	
(infra-red)		880	
(white)		WHI†	

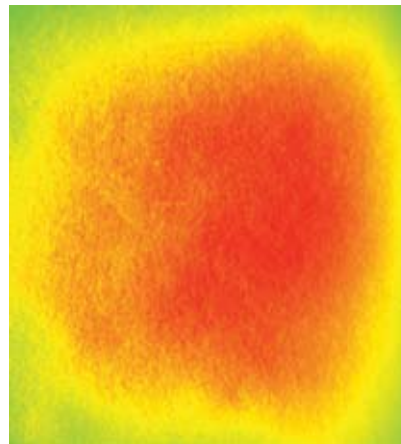
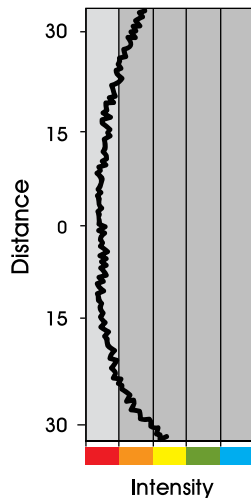
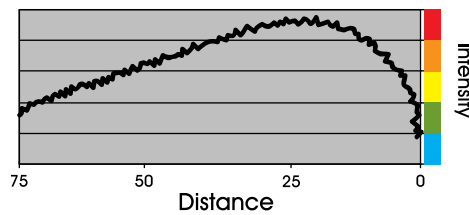
†Not available in 12v

Light Set Up Diagram



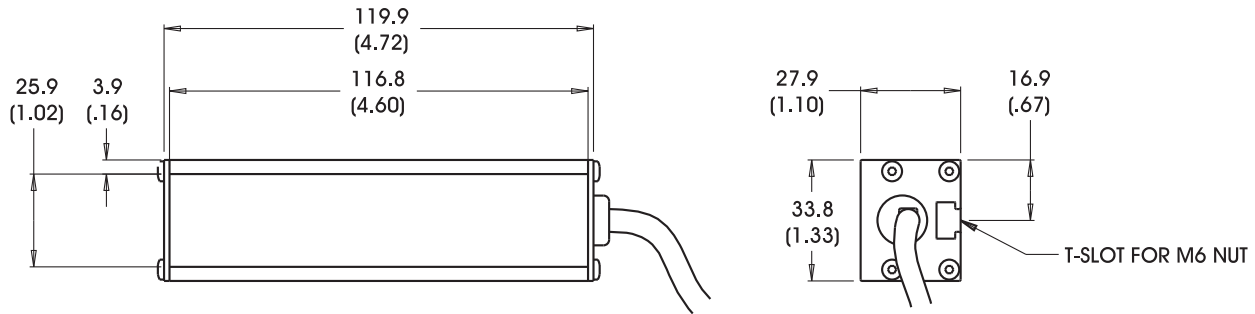
Light Consistency Information

Intensity Distribution



Intensity Cross Section

Dimensional Information



Cable Length: 1.5 Meter (4.9')

DIMENSIONS ARE IN MILLIMETERS (INCHES)

Standard Variation Current Specifications

	(blue)	(green)	(yellow)	(orange)	(red)	(infra-red)	(white)	(RGB)	
@12	N/A	N/A	80	80	120	120	N/A	N/A	mA
@24	80	80	40	40	60	60	80	N/A	mA
Ai	80	80	80	80	120	120	80	N/A	mA

General Specifications

Weight:	227 g (.51lb)
Finish:	Black Anodized
Operating Temperature:	0-60°C
Meets Specifications:	CE, RoHS

Standard Product Information

Red	Max. Illumination	Irradiance (mW/cm ²)	Illuminance (Lux)
	Working Distance: 1.5"/.5"	.26	N/A
	Working Distance: 3.0"	.95	N/A
	Lifetime	50,000 hrs	
White	Max. Illumination	Irradiance (mW/cm ²)	Illuminance (Lux)
	Working Distance: 2.0"/.5"	.61	2,000
	Working Distance: 3.0"	1.47	4,500
	Lifetime	10,000 hrs	

Additional Information

802.767.3830

BL040401

4" x 4" Surface Mount LED Back Light

- Ai**) Extremely consistent light over the entire active area of illumination.
- Ai**) Integrated M6 nut channel for easy mounting.

Ordering Information

Standard Product:
Shipped Next Day

BL040401-660

Configured for use with
Ai power supply

BL040401-66024

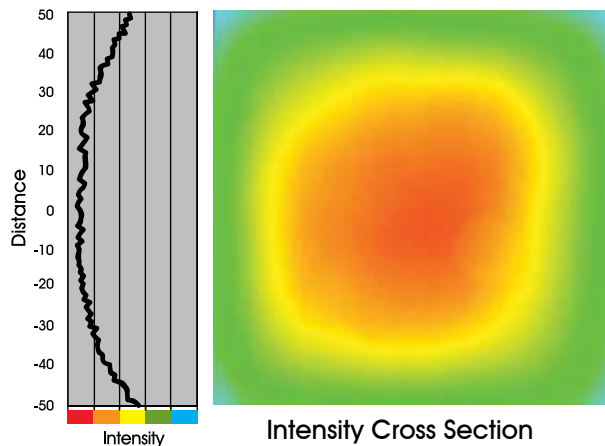
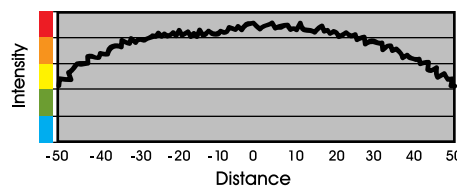
Configured for use with user
supplied 24v DC Power Supply

Standard Product Variation:
Shipped Within Two Weeks

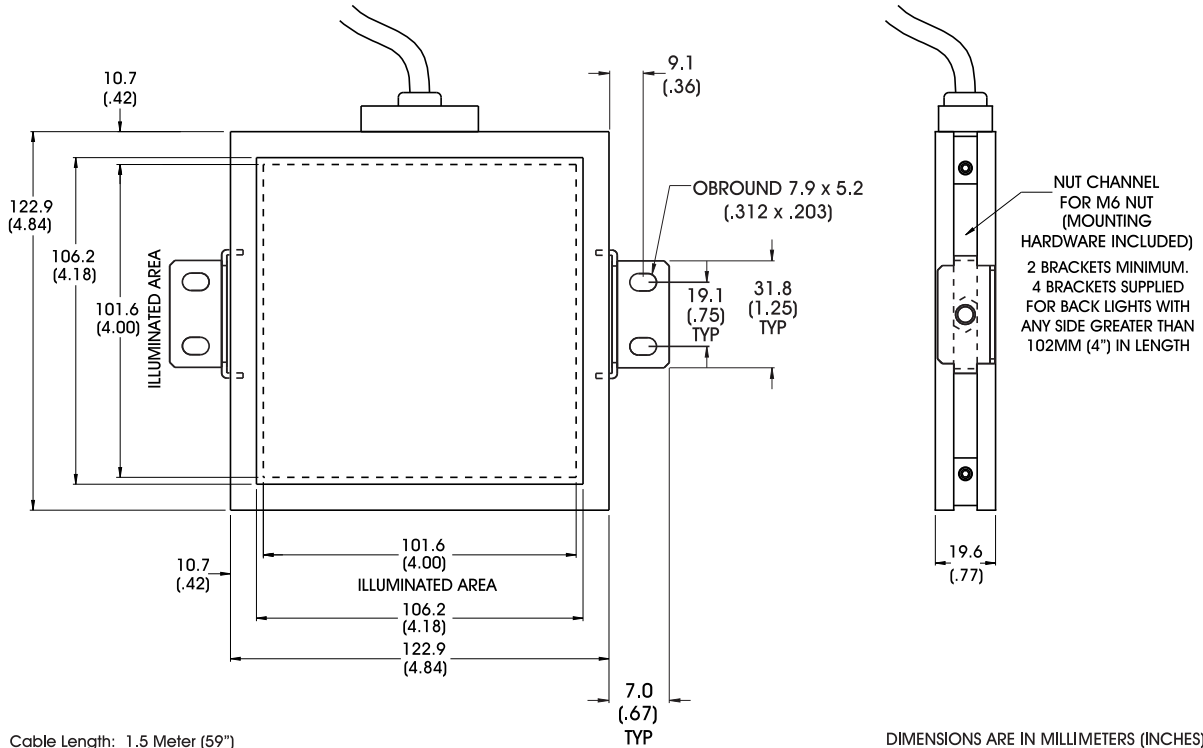
"H" "W" in inches	Spectral wavelength	Optional power Compatibility
BL04 0401 -	XXX	XX
	(red) 660	12
	(infra-red) 880	24

Light Consistency Information

Intensity Distribution



Dimensional Information



Standard Variation Current Specifications

	(blue)	(green)	(yellow)	(orange)	(red)	(infra-red)	(white)	(RGB)	
@12	N/A	N/A	N/A	N/A	960	960	N/A	N/A	mA
@24	N/A	N/A	N/A	N/A	480	480	N/A	N/A	mA
Ai	N/A	N/A	N/A	N/A	480	480	N/A	N/A	mA

General Specifications

Weight:	454 g (1lb)
Finish:	Black Anodized
Operating Temperature:	0-60°C
Meets Specifications:	CE, RoHS

Standard Product Information

Red	Max. Illumination	Irradiance (mW/cm ²)
	@ Source	1.5
	Working Distance: 75mm	.4
	Lifetime	50,000 hrs

Additional Information

CAUTION: This light requires mounting in such a way as to facilitate proper heat sinking, which will help ensure long life and stable operation. *Due to the potential of high surface temperatures, care must be exercised when installing or adjusting the product while energized.*

Various methods for effective heat transfer can be used, including:

Ensuring that the entire backside of the light is in contact with a heat sinking thermal mass

Using external fans placed in the proximity of the light to ensure air flow over the backside of the light

Operating light at reduced input voltage when applicable

For additional information on thermal mounting techniques, contact Ai.

RL1424

Bright Field Ring Light



- 4i)** Large inner diameter accommodates lenses up to 55mm in diameter
- 4i)** Can be ordered with a variety of mounting options

Ordering Information

Standard Product:
Shipped Next Day

Standard Product Variation:
Shipped Within Two Weeks

RL1424

P/N: RL1424-660100L
Configured for use with Ai
Power Supply

Mounting option	Spectral wavelength	Stand off	Field of view	Optional power Compatibility	Optional Light Conditioning
RL1424 X	-	XXX	XXX	XX	X
B (blue) 470† D (green) 520† (yellow) 590 (orange) 625 (red) 660 (infra-red) 880 (white) WHI†		See chart to Compute standoff.	XXL XL L M S XS	12 24	D (Diffuser) p (Polarizer)

Version "B" Mounting Option

Version "D" Mounting Option

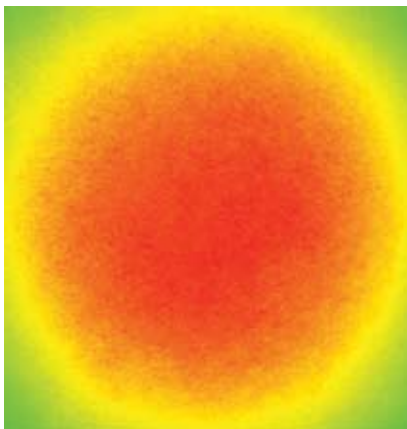
DIMENSIONS ARE IN MILLIMETERS (INCHES)

*Identify desired FOV and standoff, then specify nearest illuminated area size

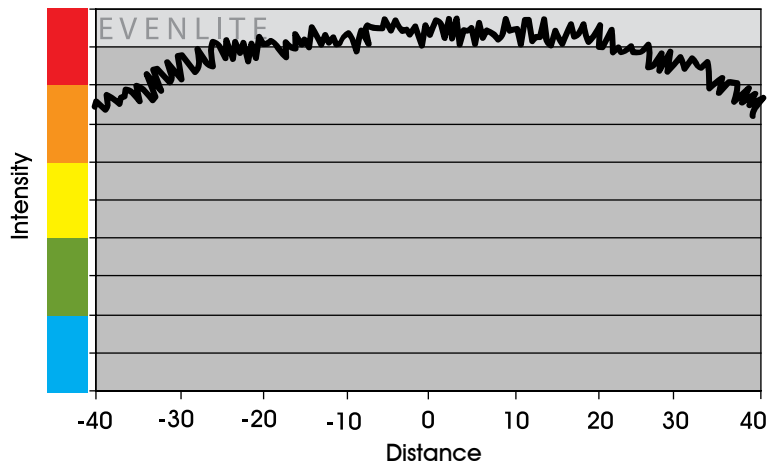
†Not available in 12v

Light Consistency Information

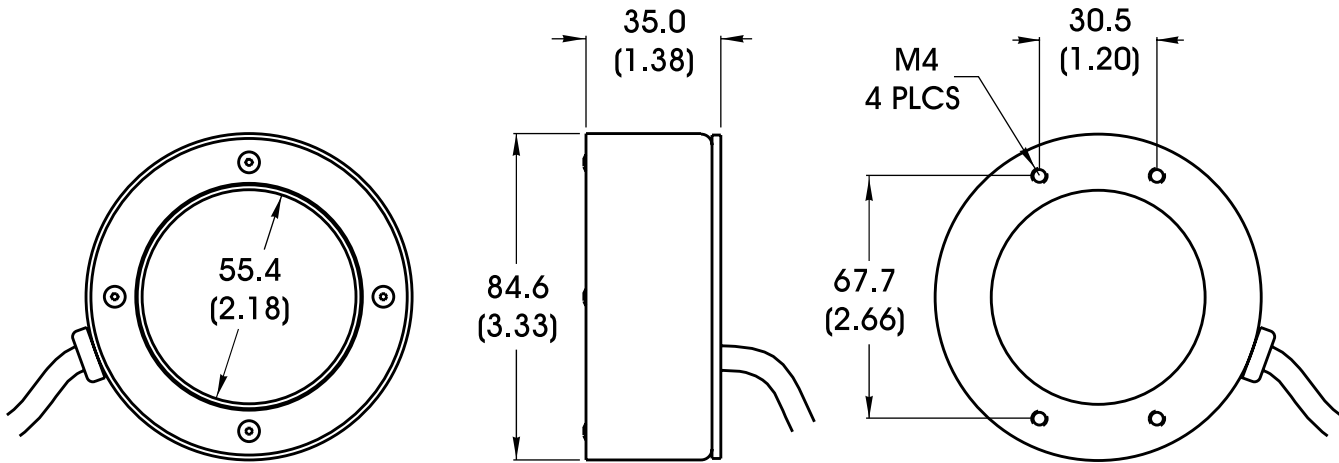
Intensity Distribution



Intensity Cross Section



Dimensional Information



DIMENSIONS ARE IN MILLIMETERS (INCHES)

Standard Variation Current Specifications

	(blue)	(green)	(yellow)	(orange)	(red)	(infra-red)	(white)	(RGB)	
@12	N/A	N/A	80	80	120	120	N/A	N/A	mA
@24	80	80	40	40	60	60	80	N/A	mA
Ai	120	120	120	120	120	120	120	N/A	mA

General Specifications

Weight:	226.8 g (8.0 oz)
Finish:	Black Anodized
Operating Temperature:	0-60°C
Meets Specifications:	CE, RoHS

Standard Product Information

Red	Max. Illumination	Irradiance (mW/cm ²)	Illuminance (Lux)
	Working Distance: 100mm	.79	N/A
	Lifetime	50,000 hrs	

White	Max. Illumination	Irradiance (mW/cm ²)	Illuminance (Lux)
	Working Distance: 100mm	1.1	2,900
	Lifetime	10,000 hrs	

Additional Information

SL2420

Bright Field Spot Light

- Ai** Ai's most popular spot light - intense illumination in a small package
- Ai** High contrast on non-reflective objects



Ordering Information

Standard Product:
Shipped Next Day

Standard Product Variation:
Shipped Within Two Weeks

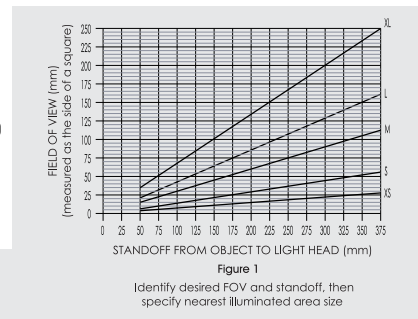
SL2420-660100L

Configured for use with Ai Power Supply

SL2420-660100L24

Configured for use with user supplied 24vDC Power Supply

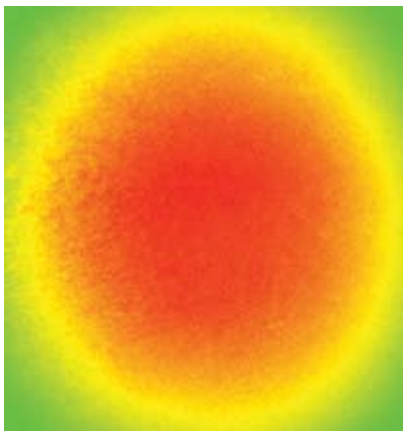
SL2420 -	Spectral wavelength	Stand off	Field of view	Optional power Compatibility	Optional Light Conditioning
XXX	XXX	XX	XX	X	
(blue)	470†	See chart to compute standoff.	XL	12	D (Diffuser)
(green)	520†		L	24	P (Polarizer)
(yellow)	590		M		
(orange)	625		S		
(red)	660		XS		
(infra-red)	880				
(white)	WHI†				



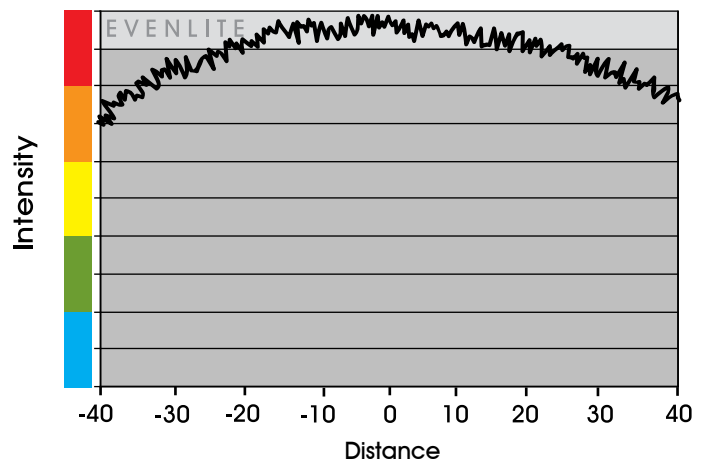
†Not available in 12v

Light Consistency Information

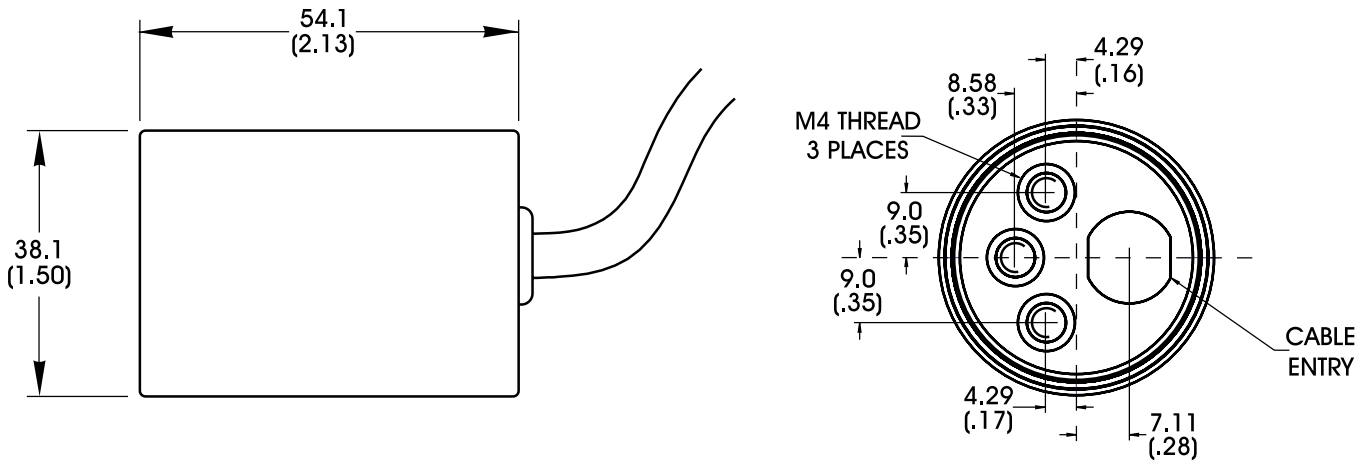
Intensity Distribution



Intensity Cross Section



Dimensional Information



DIMENSIONS ARE IN MILLIMETERS (INCHES)

Standard Variation Current Specifications

	(blue)	(green)	(yellow)	(orange)	(red)	(infra-red)	(white)	(RGB)	
@12	N/A	N/A	80	80	120	130	N/A	N/A	mA
@24	75	75	40	40	60	80	75	N/A	mA
Ai	80	80	80	80	120	120	80	N/A	mA

General Specifications

Weight:	194.1 g (6.8oz)
Finish:	Black Anodized
Operating Temperature:	0-60°C
Meets Specifications:	CE, RoHS

Standard Product Information

Red	Max. Illumination	Irradiance (mW/cm ²)	Illuminance (Lux)
	Working Distance: 100mm	.82	N/A
	Lifetime	50,000 hrs	

White	Max. Illumination	Irradiance (mW/cm ²)	Illuminance (Lux)
	Working Distance: 100mm	1.3	3,800
	Lifetime	10,000 hrs	

Additional Information