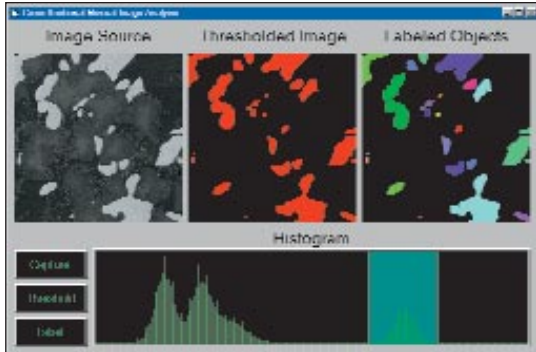


LabWindows/CVI Modules and Add-On Tools



Vision Development Module

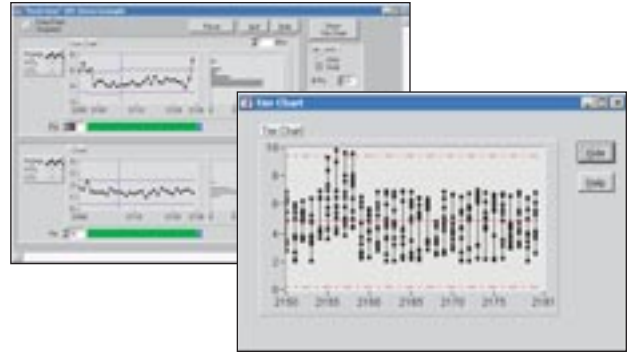
The National Instruments Vision Development Module includes NI Vision, a library of native LabWindows/CVI function panels, and NI Vision Assistant, an interactive environment for configuring vision applications. The Vision Development Module is designed for scientists, automation engineers, and technicians who build machine vision and scientific imaging applications. NI Vision Assistant is for developers who need to quickly prototype vision applications without programming.

IMAQ Vision

- Inspection and pattern matching
- Blob analysis and morphology
- Measurement and gauging
- Image enhancement and quantitative analysis
- Color image processing and frequency-domain processing

NI Vision Assistant

- Interactive environment
- Scripting and batch processing
- Visually managed image



Enterprise Connectivity Toolset

As your business grows, you need enterprise connectivity tools to help you monitor your progress from research and development to the production, test, and service of your product. The LabWindows/CVI Enterprise Connectivity Toolset provides integrated tools for structured query language (SQL) database operations, statistical process control (SPC) quality control, and Internet-enabling technology to give you the access and networking you need for business operations.

- Database Connectivity
- Statistical Process Control
- Internet Connectivity

LabWindows/CVI Ordering Information

Full Development System

The LabWindows/CVI Full Development System (FDS) provides everything you need to develop powerful measurement applications. The FDS adds report generation capabilities; advanced analysis capabilities such as curve fitting, signal processing, signal generation, and filtering; NI Measurement Studio – add-in components for Microsoft Visual Studio; and the Windows Software Development Kit (SDK) to the LabWindows/CVI Base Package features.

Base Package

The Base Package includes libraries for acquisition, instrumentation, user interface development, and base analysis. The package also has 3D graphing optimized with OpenGL and the simplified network and Web functionality of DataSocket for developing distributed virtual instrumentation systems.

NI Developer Suite

NI Developer Suite is a subscription program that includes the software tools you need to build a complete measurement system. From making measurements to analyzing and presenting results, NI Developer Suite brings you the latest industry-standard software and provides you with regular quarterly updates of NI application and driver software as well as other software resources to keep you up to date with the very latest development tools.

NI TestStand

National Instruments TestStand 3.0 reduces test development time and simplifies maintenance. National Instruments designed TestStand to automate a wide variety of test systems. Out of the box, TestStand is a ready-to-run test executive that organizes, controls, and executes your automated prototype, validation, or production test systems.

LabWindows/CVI Development Packages

	Base Package	Full Development System
User Interface Controls	✓	✓
Instrument Control	✓	✓
Data Acquisition	✓	✓
IVI Driver connectivity	✓	✓
3D Visualization	✓	✓
Networking Tools (DataSocket)	✓	✓
ActiveX capabilities	✓	✓
Statistics	✓	✓
DAQ Assistant	✓	✓
Instrument I/O Assistant	✓	✓
XML capabilities	✓	✓
LabVIEW Real-Time connectivity	✓	✓
NI TestStand Integration	✓	✓
Curve Fitting		✓
Signal Processing		✓
Signal Generation		✓
Report Generation		✓
Filtering		✓
Windowing		✓
Windows Software Development Kit		✓
NI Measurement Studio for Microsoft Visual Studio		✓

Services and Support

As a complement to your LabWindows/CVI product, consider the following options:

LabWindows/CVI Software Subscription Program (SSP) – Software upgrades and priority support for one year – ni.com/ssp

Technical Support – FREE through Applications Engineers worldwide, Web resources, and Premier Support – ni.com/support

LabWindows/CVI Training – Instructor-led courses – ni.com/training

Professional Services – Feasibility, consulting, and integration through our Alliance Program members – ni.com/alliance

For more information about NI services and support, visit ni.com/services

Ordering Information

NI LabWindows/CVI for Windows 2000/NT (SP6)/XP	
Development systems	
Full Development System	776800-03
Base Package	776801-03
Vision Development Module	777860-03
Add-on tools	
Enterprise Connectivity Toolset	777875-03
Signal Processing Toolset	777136-01
PID Control Toolkit	776991-01
IVI Driver Toolset	777855-03
SPC Toolkit	777209-01
Software subscription service	930001-02

NI Developer Suite offers many of these products bundled with other NI software tailored for test or control applications. See page 39 for more information.

NI LabWindows/CVI for Sun

Full Development System	776820-03
SPC Toolkit	777209-11

Training

Basics I Course	910019-xx1
Basics II Course	910512-xx1
Instrument Driver Development Course	910556-xx1
VXI Course	910504-xx1

Please refer to Training and Certification (page 758) to complete part number.

BUY ONLINE!

Visit ni.com/info and enter *labwindowscvi*