

# IVI™ Documentation Converter Utility User Guide

This document describes the purpose and use of the IVI Documentation Converter utility.

Use the IVI Documentation Converter utility before using the Import CVI Instrument Driver utility in LabVIEW. The Import CVI Instrument Driver utility in LabVIEW converts a CVI version of an IVI driver to a LabVIEW version of an IVI driver. The IVI Documentation Converter utility is a pre-processing utility that converts an IVI driver help to LabVIEW help.

Converting the IVI driver help to LabVIEW help is necessary because the IVI driver help contains words and terms that are not common for LabVIEW users. For example, in LabVIEW attributes are called properties, functions are called VIs, and so on. Updating the LabVIEW help manually after an Import CVI Instrument Driver utility in LabVIEW conversion is time consuming and error prone. Instead, the IVI Documentation Converter utility performs many of the necessary conversion tasks automatically, allowing quick conversion of IVI driver help to LabVIEW help.



**Note** The IVI Documentation Converter utility has been created and optimized primarily for use with IVI drivers developed using the “Create IVI Instrument Driver...” wizard in LabWindows™/CVI™. The IVI Documentation Converter utility has not been thoroughly tested with the *VXIplug&play* drivers to verify proper and expected behavior, function, or performance. When used with the *VXIplug&play* drivers, National Instruments (NI) does not warrant that the IVI Documentation Converter utility will meet your requirements or that the use or operation thereof will be uninterrupted or error-free.

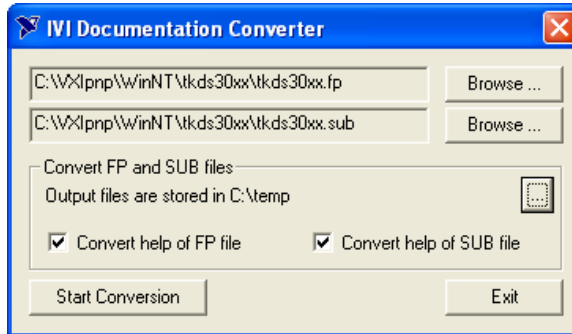
# Using the IVI Documentation Converter Utility

---

To convert the IVI driver help to LabVIEW help, complete the following steps:

1. Launch the utility from **Start»Programs»National Instruments»IVI Tools**.

The IVI Documentation Converter Utility Window opens, as shown in Figure 1.



**Figure 1.** IVI Documentation Converter Utility Window

2. Complete the following items on the IVI Documentation Converter utility window.
  - a. Browse for the FP and SUB files of the driver.
  - b. Select where you want the output files to be stored on your system.
  - c. Select both convert options if you are converting an IVI driver help. If you are converting a *VXIplug&play* driver, select only the **Convert help of FP file** option.
  - d. Click **Start Conversion**.

The Task Table Window opens, as shown in Figure 2.

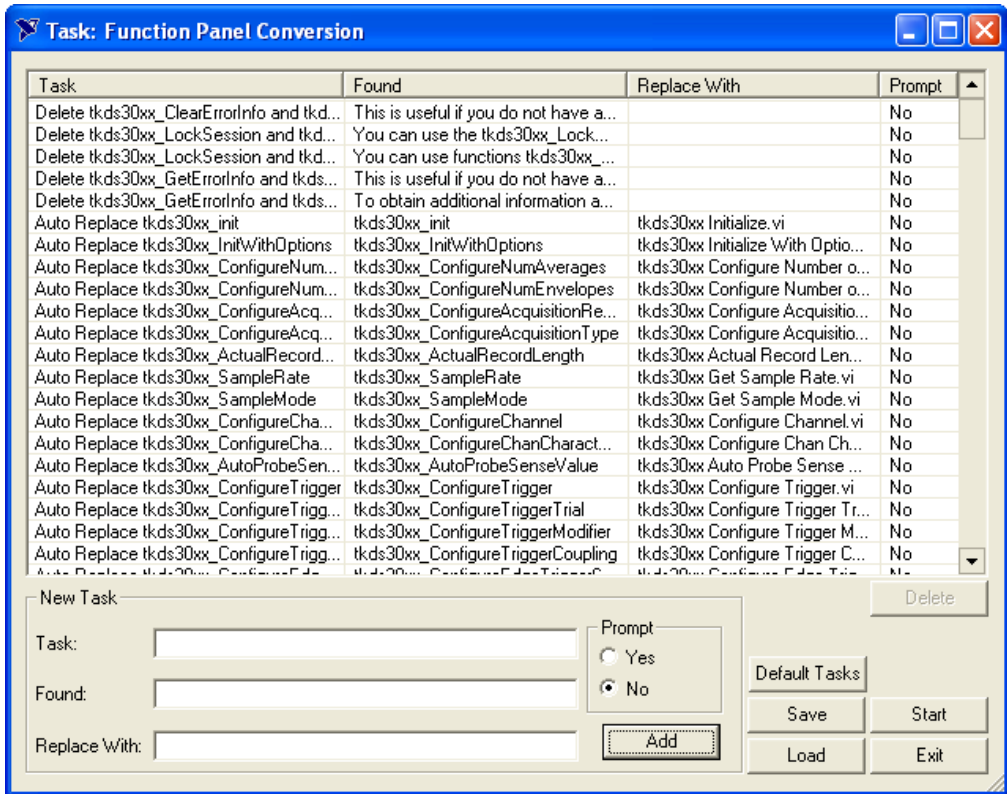
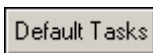
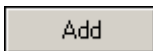


Figure 2. Task Table Window

- Review the default tasks listed in the Task table.

The interface has the following command buttons on the toolbar in the bottom right corner of the interface.



**Add**—To add a task, complete the New Task section in the bottom left of the Task table window and click **Add**.

**Default Tasks**—To go back to the list of default tasks, click **Default Tasks**. The Default Tasks Dialog window has an upper and lower window divided by toggle buttons. When you remove a task from the original default list, the utility stores a copy of that task. The Default Tasks Dialog window displays all the original tasks in the upper window.

- To place the original tasks into the current task list, transfer the task from the upper window to the lower window with the toggle (V) button.
- Click **OK**.



**Save**—To save a task or list of tasks in a modified XML file, click **Save**.



**Note** When saving a modified XML file, rename it.



**Load**—To load a previously saved XML file, click **Load**.



**Delete**—To delete an existing task, highlight that task in the Task table and click **Delete**.



**Start**—Click **Start** to begin the conversion.



**Exit**—Click **Exit** to close the utility.

4. Click **Start**. After you click **Start**, the FP file Modifications window opens.
5. For each task with a **Yes** selected for Prompt in the Task table window, the FP file Modifications window prompts you to either change the highlighted word/term or skip it.
6. After the utility converts the FP help, repeat steps 2 through 6 to convert the SUB help.

The utility stores the converted FP and SUB files in the folder that you specified in step 1. You should use files from the LabVIEW folder when you run the Import CVI Instrument Driver utility in LabVIEW.



**Note** The tool also creates XML versions of FP and SUB files: `.fpx` and `.sbx`, respectively. These XML file versions can be found in the Advanced folder and are meant to be used by advanced users who might need to programmatically access the FP and SUB files.

## Giving Feedback

---

If you have comments or questions about this utility, contact National Instruments at [instrument.driver@ni.com](mailto:instrument.driver@ni.com).

