

CALIBRATION PROCEDURE

NI 5122/5124

Contents

Conventions	2
Introduction	2
Self-Calibration	3
External Calibration.....	3
Calibration Interval.....	3
Software and Documentation Requirements.....	3
Software	3
Documentation.....	5
Self-Calibration Procedures	5
MAX.....	6
Scope SFP	6
NI-SCOPE	6
External Calibration Options	8
Complete Calibration.....	9
Optional Calibration	10
External Calibration Requirements.....	12
Test Equipment	12
Test Conditions	12
External Calibration Procedures	13
Verifying NI 5122/5124 Specifications.....	13
Vertical Offset and Vertical Gain Accuracy.....	13
Programmable Vertical Offset Accuracy.....	20
Timing Accuracy	22
Bandwidth and Flatness.....	24
Trigger Sensitivity	29
Adjusting the NI 5122/5124	31
Calibration Utilities.....	33
MAX.....	33
NI-SCOPE	34
Calibration Function References.....	34
Where to Go for Support.....	34

Conventions

The following conventions are used in this manual:

» The » symbol leads you through nested menu items and dialog box options to a final action. The sequence **File»Page Setup»Options** directs you to pull down the **File** menu, select the **Page Setup** item, and select **Options** from the last dialog box.

◆ The ◆ symbol indicates that the following text applies only to a specific product, a specific operating system, or a specific software version.



This icon denotes a note, which alerts you to important information.



This icon denotes a caution, which advises you of precautions to take to avoid injury, data loss, or a system crash. When this symbol is marked on a product, refer to the *Read Me First: Safety and Radio-Frequency Interference* document for information about precautions to take.

bold Bold text denotes items that you must select or click in the software, such as menu items and dialog box options. Bold text also denotes parameter names.

italic Italic text denotes variables, emphasis, a cross reference, or an introduction to a key concept. This font also denotes text that is a placeholder for a word or value that you must supply.

monospace Text in this font denotes text or characters that you should enter from the keyboard, sections of code, programming examples, and syntax examples. This font is also used for the proper names of disk drives, paths, directories, programs, subprograms, subroutines, device names, functions, operations, variables, filenames, and extensions.

monospace italic Italic text in this font denotes text that is a placeholder for a word or value that you must supply.

Introduction

This document contains instructions for calibrating NI PXI/PCI-5122 and NI PXI/PCI-5124 digitizers. This calibration procedure is intended for metrology labs. This document describes specific programming steps for writing an external calibration procedure for the NI 5122/5124.

The NI 5122/5124 supports two types of calibration: self-calibration (or internal calibration) and external calibration.

Self-Calibration

Self-calibration, also known as internal calibration, uses a software command and requires no external connections. Self-calibration improves measurement accuracy by compensating for variables such as temperature that may have changed since the last external calibration. Self-calibration retains the traceability of the external calibration.

External Calibration

External calibration is generally performed with a high-precision oscilloscope calibrator at either NI or a metrology lab. This procedure replaces all calibration constants in the EEPROM and is equivalent to a factory calibration at NI. Because the external calibration procedure changes all EEPROM constants, it invalidates the original calibration certificate. If an external calibration is done with a traceable signal generator source, a new calibration certificate can be issued.

Calibration Interval

Self-calibration can be performed as necessary to compensate for environmental changes.



Caution Although you can use self-calibration repeatedly, self-calibrating the NI 5122/5124 more than a few times a day may cause excessive wear on the relays over time.

The measurement accuracy requirements of your application determine how often you should externally calibrate the NI 5122/5124. NI recommends that you perform a complete external calibration at least once every two years. You can shorten this interval based on the accuracy demands of your application. Refer to the [External Calibration Options](#) section for more information.

Software and Documentation Requirements

This section describes the software and documentation required for both self-calibration and external calibration.

Software

Calibrating the NI 5122/5124 requires installing NI-SCOPE version 2.7 or later on the calibration system. You can download NI-SCOPE from the Instrument Driver Network at ni.com/idnet. NI-SCOPE supports programming the [Self-Calibration Procedures](#) in a number of programming languages. However, only LabVIEW and C are supported for the [External Calibration Procedures](#).

NI-SCOPE 2.7 or later includes all the functions and attributes necessary for calibrating the NI 5122/5124. For LabWindows™/CVI™, the NI-SCOPE function panel `niScopeCal.fp` provides further help on the functions available in CVI. LabVIEW support is installed in `niScopeCal.llb`, and all calibration functions appear in the function palette. Refer to Table 1 for file locations.

Calibration functions are C function calls or LabVIEW VIs in the NI-SCOPE driver. In this document, the C function call is shown first, followed by the corresponding LabVIEW VI in parentheses. The C function calls are valid for any compiler capable of calling a 32-bit DLL. Many of the functions use constants defined in the `niScopeCal.h` file. To use these constants in C, you must include `niScopeCal.h` in your code when you write the calibration procedure.

For more information on the calibration functions and VIs, refer to the *NI-SCOPE Function Reference Help* or the *NI-SCOPE VI Reference Help*. These references can be found in the *NI High-Speed Digitizers Help*. To access this help file, go to **Start»Programs»National Instruments»NI-SCOPE»Documentation»NI High-Speed Digitizers Help**.

Table 1. Calibration File Locations after Installing NI-SCOPE 2.7 or Later

File Name and Location	Description
IVI\Bin\niscope_32.dll	NI-SCOPE driver containing the entire NI-SCOPE API, including calibration functions
IVI\Lib\msc\niscope.lib	NI-SCOPE library for Microsoft C containing the entire NI-SCOPE API, including calibration functions
LabVIEW (version)\examples\instr\niScope	Directory of LabVIEW NI-SCOPE example VIs, including self-calibration; access the calibration example from the LabVIEW function palette
LabVIEW (version)\instr.lib\niScope Calibrate\niScopeCal.llb	LabVIEW VI library containing VIs for calling the NI-SCOPE calibration API; access calibration functions from the NI-SCOPE calibration section of the LabVIEW function palette
IVI\Drivers\niScope\niScopeCal.fp	CVI function panel file that includes external calibration function prototypes and help on using NI-SCOPE in the CVI environment

Table 1. Calibration File Locations after Installing NI-SCOPE 2.7 or Later (Continued)

File Name and Location	Description
IVI\Include\niScopeCal.h	Calibration header file, which you must include in any C program accessing calibration functions. This file automatically includes niScope.h, which defines the rest of the NI-SCOPE interface
IVI\Drivers\niScope\Examples\	Directory of NI-SCOPE examples for CVI, C, Visual C++, and Visual Basic

Documentation

You may find the following documentation helpful as you write your calibration procedure:

- *NI High-Speed Digitizers Getting Started Guide*
- *NI High-Speed Digitizers Help*
- *NI PXI/PCI-5122 Specifications* or *NI PXI/PCI-5124 Specifications*
- *NI-SCOPE Function Reference Help* or *NI-SCOPE VI Reference Help*

These documents are installed with NI-SCOPE. You can also download the latest versions from the NI Web site at ni.com/manuals.

Self-Calibration Procedures

The NI 5122/5124 includes precise internal circuits and references used during self-calibration to adjust for time and temperature drift. The digitizer gain, offset, flatness, and trigger timing are all corrected in self-calibration. Measuring the accuracy of these internal calibration circuits with another instrument during external calibration provides traceability for the verification procedure. Absolute accuracy is ensured by compensating for any error measured in the internal references.



Note Self-calibrate the digitizer before you perform verification. NI-SCOPE includes self-calibration example programs for LabVIEW, CVI, and Microsoft Visual C.

You can initiate self-calibration using Measurement & Automation Explorer (MAX), using the Scope Soft Front Panel (SFP), or programmatically using NI-SCOPE.

MAX

To initiate self-calibration from MAX, complete the following steps:

1. Disconnect or disable any AC inputs to the digitizer.
2. Launch MAX.
3. Select **My System»Devices and Interfaces»NI-DAQmx Devices**.
4. Select the device that you want to calibrate.
5. Initiate self-calibration using one of the following methods:
 - Click **Self-Calibrate** in the upper right corner of MAX.
 - Right-click the name of the device in the MAX configuration tree and select **Self-Calibrate** from the drop-down menu.

Scope SFP

To initiate self-calibration from the Scope SFP, complete the following steps:

1. Disconnect or disable any AC inputs to the digitizer.
2. Launch the Scope SFP (**Start»Programs»National Instruments»NI-SCOPE»Scope Soft Front Panel**).
3. Select the device you want to calibrate using the Device Configuration dialog box (**Edit»Device Configuration**).
4. Launch the Calibration dialog box (**Utility»Self Calibration**).
5. Click **OK** to begin self-calibration.

NI-SCOPE

To self-calibrate the NI 5122/5124 programmatically using NI-SCOPE, complete the following steps:

1. Disconnect or disable any AC inputs to the digitizer.
2. Call `niScope_init` (niScope Initialize VI) to obtain an instrument session handle. Set the following parameters:
 - **resourceName**: The device name assigned by MAX
 - **IDQuery**: `NISCOPE_VAL_VI_FALSE`
 - **resetDevice**: `NISCOPE_VAL_VI_FALSE`
 - **vi**: The returned session handle that you use to identify the instrument in all subsequent instrument driver function calls
3. Call `niScope_calSelfCalibrate` (niScope Cal Self Calibrate VI) with the following parameters:
 - **sessionHandle**: The instrument handle that you obtain from `niScope_init` (niScope Initialize VI)

- **channelList:** VI_NULL
- **option:** VI_NULL

Because the session is a standard session rather than an external calibration session, the new calibration constants are immediately stored in the EEPROM. Therefore, you can include this procedure in any application that uses the digitizer.

4. Call `niScope_close` (niScope Close VI) to close the session handle. Set the following parameter:
 - **vi:** The instrument handle you obtained from `niScope_init`

External Calibration Options

External calibration involves both adjustment and verification. Adjustment is the process of measuring and compensating for device performance to improve the measurement accuracy. Performing an adjustment updates the calibration date, effectively resetting the calibration interval. The device is guaranteed to meet or exceed its published specifications for the duration of the calibration interval. Verification is the process of testing the device to ensure that the measurement accuracy is within certain specifications. Verification can be used to ensure that the adjustment process was successful, or to determine if the adjustment process needs to be performed at all. During verification, you must compare the measurement error to limits given in Tables 3 through 12.

This document provides two sets of test limits for most verification stages—the *calibration test limits* and the *published specifications*. The calibration test limits are more restrictive than the published specifications. If all of the measurement errors determined during verification fall within the calibration test limits, the device is guaranteed to meet or exceed its published specifications for a full calibration interval (two years). For this reason, you must verify against the calibration test limits when performing verification after adjustment. If all of the measurement errors determined during verification fall within the published specifications, but not within the calibration test limits, the device is meeting its published specifications. However, the device will not necessarily remain within these specifications for an additional two years. The device will meet published specifications for the remainder of the current calibration interval. In this case, you can perform an adjustment if you want to further improve the measurement accuracy or reset the calibration interval. If some measurement errors determined during verification do not fall within the published specifications, you must perform an adjustment to restore the device operation to its published specifications.

The *Complete Calibration* section describes the recommended calibration procedure. The *Optional Calibration* section describes alternative procedures that allow you to skip adjustment if the device already meets its calibration test limits or published specifications.

Complete Calibration

Performing a complete calibration is the recommended way to guarantee that the NI 5122/5124 will meet or exceed its published specifications for a two-year calibration interval. At the end of the complete calibration procedure, you verify that the measurement error falls within the calibration test limits. Figure 1 shows the programming flow for complete calibration.

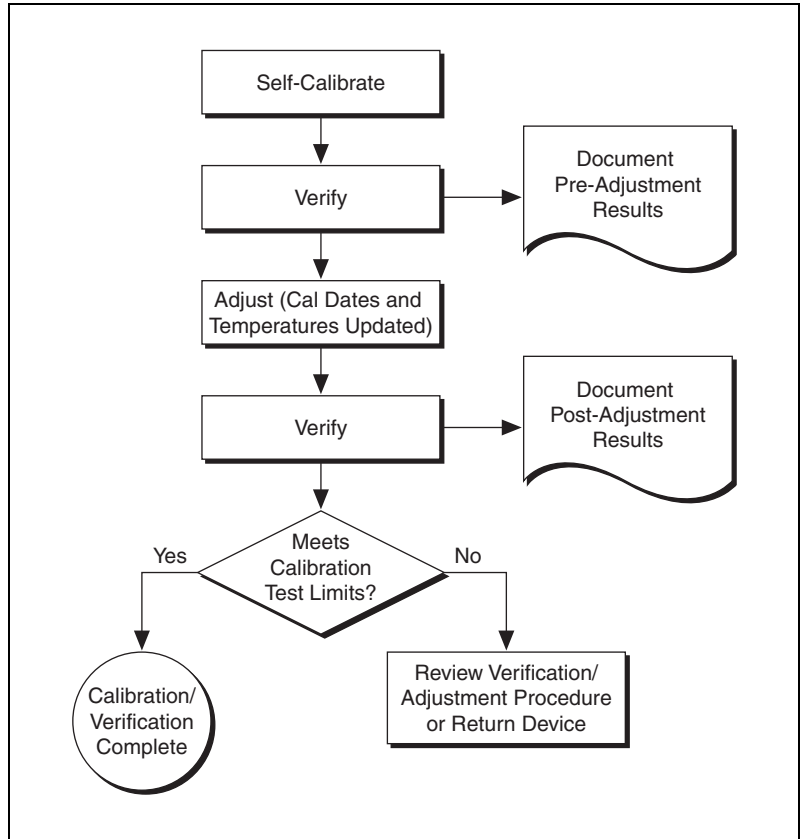


Figure 1. Complete Calibration Programming Flow

Optional Calibration

You can choose to skip the adjustment steps of the calibration procedure if the measurement error is within the calibration test limits or the published specifications during the first verification. If all of the measurement errors determined during the first verification fall within the calibration test limits, the device is guaranteed to meet or exceed its published specifications for a full calibration interval. In this case, you can update the calibration date, effectively resetting the calibration interval, without actually performing an adjustment. Refer to the [Adjusting the NI 5122/5124](#) section for more information.

If all of the measurement errors determined during the first verification fall within the published specifications, but not within the calibration test limits, adjustment is also optional. However, you cannot update the calibration date, because the device will not necessarily operate within the published specifications for an additional two years.



Note Regardless of the results of the first verification, if you choose to perform an adjustment, you must verify that the measurement error falls within the calibration test limits at the end of the calibration procedure.

Figure 2 shows the programming flow for the optional calibration.

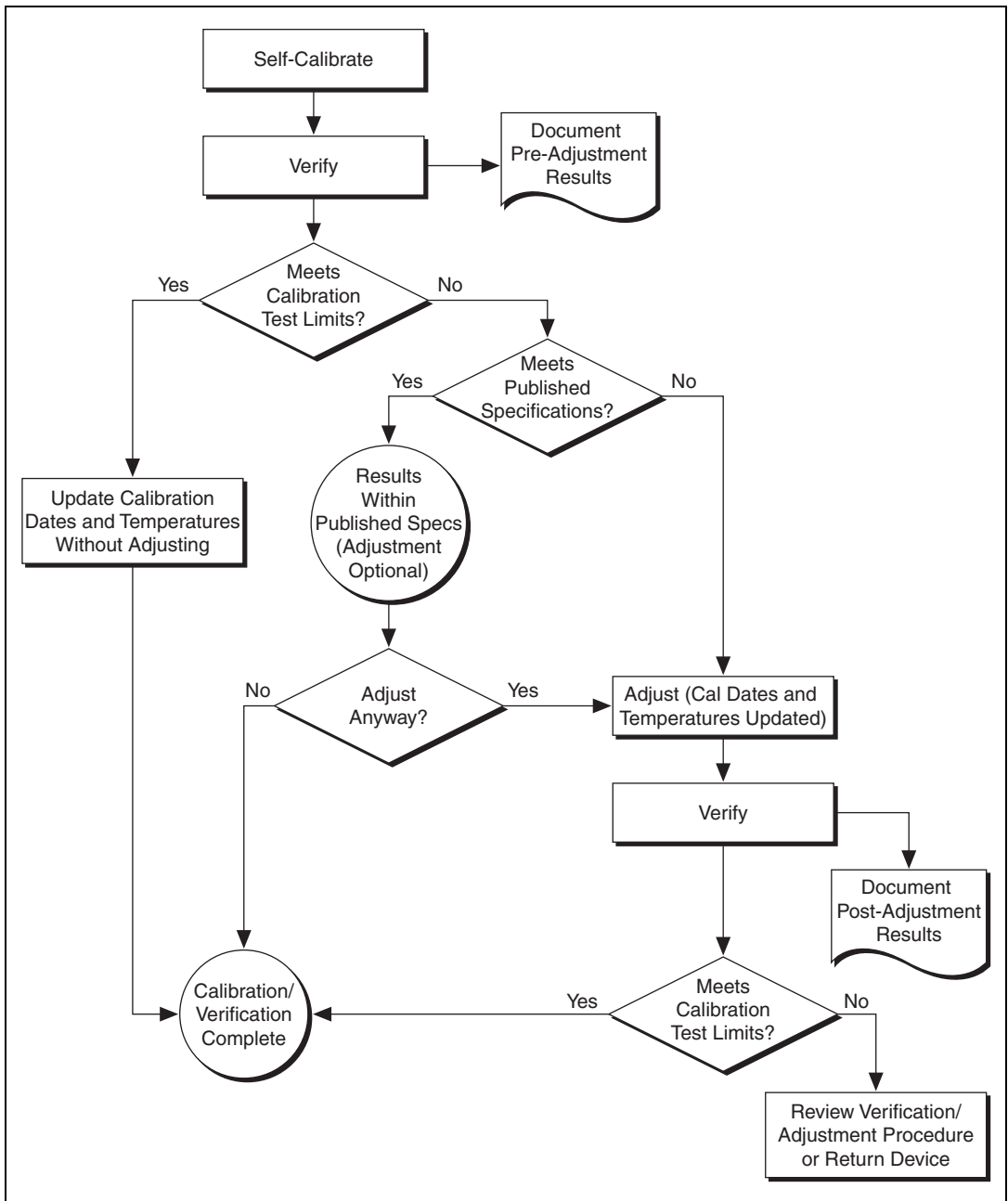


Figure 2. Optional Calibration Programming Flow

External Calibration Requirements

Test Equipment

Table 2 lists the equipment required for externally calibrating the NI 5122/5124. If you do not have the recommended instruments, use these specifications to select a substitute calibration standard.

Table 2. Required Equipment Specifications for NI 5122/5124 External Calibration

Required Equipment	Recommended Equipment	Parameter Measured	Specification
Signal Generator	Fluke 9500B oscilloscope calibrator (Wavetek 9500 with high-stability reference option) 9510 Test Head	Vertical Gain	DC $\pm(0.025\% + 25 \mu\text{V})$ into 1 M Ω or 50 Ω
		Bandwidth	$\pm 1.5\%$ output amplitude flatness for leveled sine wave up to 100 MHz relative to 50 kHz into 1 M Ω or 50 Ω
		Timing	2 ppm frequency accuracy
BNC cable	—	—	50 Ω



Note The delay times indicated in this procedure apply specifically to the Fluke 9500B calibrator. If you use a different calibrator, you may need to adjust these delay times.

Test Conditions

Follow these guidelines to optimize the connections and the environment during calibration:

- Always connect the calibrator test head directly to the input BNC of the digitizer, or use a short 50 Ω BNC coaxial cable if necessary. Long cables and wires act as antennae, picking up extra noise that can affect measurements.
- Keep relative humidity between 10 and 90% non-condensing, or consult the digitizer hardware documentation for the optimum relative humidity.
- Maintain an ambient temperature of 23 ± 5 $^{\circ}\text{C}$.
- Allow a warm-up time of at least 15 minutes after the NI-SCOPE driver is loaded. Unless manually disabled, the NI-SCOPE driver automatically loads with the operating system and enables the device. The warm-up time ensures that the measurement circuitry of the NI 5122/5124 is at a stable operating temperature.

- ◆ For PXI digitizers:
 - Ensure that the PXI chassis fan speed is set to HI, that the fan filters are clean, and that the empty slots contain filler panels.
 - Plug the PXI chassis and the calibrator into the same power strip to avoid ground loops.
- ◆ For PCI digitizers:
 - Plug the PC and the calibrator into the same power strip to avoid ground loops.

External Calibration Procedures

The complete external calibration procedure consists of self-calibrating, verifying the performance of the digitizer, adjusting the calibration constants, and verifying again after the adjustments. In some cases, the complete calibration procedure may not be required. Refer to the [External Calibration Options](#) section for more information.

The external calibration procedure automatically stores the calibration date to allow traceability.

Verifying NI 5122/5124 Specifications



Note Always self-calibrate the NI 5122/5124 before beginning a verification procedure.

This section describes the program you must write to verify either the calibration test limits or the published specifications for the NI 5122/5124. Refer to the [External Calibration Options](#) section to determine which limits to use in these procedures.

All verification procedures described in this section begin with `niScope_init` (niScope Initialize VI) with `resetDevice` set to `NISCOPE_VAL_TRUE`, and end with `niScope_close` (niScope Close VI).



Note If any of these tests fail immediately after you perform an external adjustment, verify that you have met the required test conditions listed in the [External Calibration Requirements](#) section before you return the digitizer to NI for repair.

Vertical Offset and Vertical Gain Accuracy

Table 3 contains the input parameters for verifying both vertical offset accuracy and vertical gain accuracy of the NI 5122/5124.

To verify vertical offset accuracy, complete the procedures described in the [Vertical Offset Accuracy](#) section for each of the 39 iterations listed in

Table 3 for channel 0, then repeat the procedures for channel 1. The Calibration Test Limits and Published Specifications for vertical accuracy are shown in Table 4 (NI 5122) and Table 5 (NI 5124).

To verify vertical gain accuracy, complete the procedures described in the *Vertical Gain Accuracy* section for each of the 39 iterations listed in Table 3 for channel 0, then repeat the procedures for channel 1. The Calibration Test Limits and Published Specifications for vertical gain are shown in Table 6 (NI 5122) and Table 7 (NI 5124).

Table 3. NI 5122/5124 Input Parameters for Vertical Offset Accuracy and Vertical Gain Accuracy Verification

Iteration	Input Impedance	Max Input Frequency (Hz)		Range
		NI 5122	NI 5124	
1	50 Ω	100,000,000	150,000,000	0.2
2	50 Ω	100,000,000	150,000,000	0.4
3	50 Ω	100,000,000	150,000,000	1
4	50 Ω	100,000,000	150,000,000	2
5	50 Ω	100,000,000	150,000,000	4
6	50 Ω	100,000,000	150,000,000	10
7	50 Ω	35,000,000	60,000,000	0.2
8	50 Ω	35,000,000	60,000,000	0.4
9	50 Ω	35,000,000	60,000,000	1
10	50 Ω	35,000,000	60,000,000	2
11	50 Ω	35,000,000	60,000,000	4
12	50 Ω	35,000,000	60,000,000	10
13	50 Ω	20,000,000	20,000,000	0.2
14	50 Ω	20,000,000	20,000,000	0.4
15	50 Ω	20,000,000	20,000,000	1
16	50 Ω	20,000,000	20,000,000	2
17	50 Ω	20,000,000	20,000,000	4
18	50 Ω	20,000,000	20,000,000	10
19	1 MΩ	100,000,000	150,000,000	0.2
20	1 MΩ	100,000,000	150,000,000	0.4

Table 3. NI 5122/5124 Input Parameters for Vertical Offset Accuracy and Vertical Gain Accuracy Verification (Continued)

Iteration	Input Impedance	Max Input Frequency (Hz)		Range
		NI 5122	NI 5124	
21	1 MΩ	100,000,000	150,000,000	1
22	1 MΩ	100,000,000	150,000,000	2
23	1 MΩ	100,000,000	150,000,000	4
24	1 MΩ	100,000,000	150,000,000	10
25	1 MΩ	100,000,000	150,000,000	20
26	1 MΩ	35,000,000	60,000,000	0.2
27	1 MΩ	35,000,000	60,000,000	0.4
28	1 MΩ	35,000,000	60,000,000	1
29	1 MΩ	35,000,000	60,000,000	2
30	1 MΩ	35,000,000	60,000,000	4
31	1 MΩ	35,000,000	60,000,000	10
32	1 MΩ	35,000,000	60,000,000	20
33	1 MΩ	20,000,000	20,000,000	0.2
34	1 MΩ	20,000,000	20,000,000	0.4
35	1 MΩ	20,000,000	20,000,000	1
36	1 MΩ	20,000,000	20,000,000	2
37	1 MΩ	20,000,000	20,000,000	4
38	1 MΩ	20,000,000	20,000,000	10
39	1 MΩ	20,000,000	20,000,000	20

Vertical Offset Accuracy

To verify vertical offset accuracy, complete steps 1 through 8 for each of the 39 configuration iterations listed in Table 3.

1. Call `niScope_ConfigureChanCharacteristics` (`niScope Configure Chan Characteristics VI`) with the following parameters:
 - **channelList:** "0"

- **inputImpedance:** The Input Impedance value for the current iteration from Table 3
 - **maxInputFrequency:** The Maximum Input Frequency value for the current iteration from Table 3
2. Call `niScope_ConfigureVertical` (niScope Configure Vertical VI) with the following parameters:
 - **channelList:** "0"
 - **range:** The Range value for the current iteration from Table 3
 - **offset:** 0.0
 - **coupling:** NISCOPE_VAL_DC
 - **probeAttenuation:** 1.0
 - **enabled:** NISCOPE_VAL_TRUE
 3. Call `niScope_ConfigureHorizontalTiming` (niScope Configure Horizontal Timing VI) with the following parameters:
 - **minSampleRate:** 10,000,000
 - **minNumPts:** 100,000
 - **refPosition:** 50.0
 - **numRecords:** 1
 - **enforceRealtime:** NISCOPE_VAL_TRUE
 4. Call `niScope_Commit` (niScope Commit VI) with the following parameter:
 - **vi:** The instrument handle you obtained from `niScope_init`
 5. Short-circuit the channel 0 input of the digitizer by connecting the calibrator test head directly to the digitizer and grounding the output of the calibrator.
 6. Wait 500 ms for the impedance matching of the calibrator to settle.
 7. Call `niScope_InitiateAcquisition`. (niScope Initiate Acquisition VI) with the following parameter:
 - **vi:** The instrument handle you obtained from `niScope_init`
 8. Call `niScope_FetchMeasurement` (niScope Fetch Measurement VI) with the following parameters:
 - **channelList:** "0"
 - **timeout:** 1.0
 - **scalarMeasFunction:** NISCOPE_VAL_VOLTAGE_AVERAGE

Compare the resulting average voltage to the value listed in the Calibration Test Limits column or the Published Specifications column in Table 4 (NI 5122) or Table 5 (NI 5124) that corresponds to the vertical range used. The **inputImpedance** and **maxInputFrequency**

do not affect the test limit value. If the result is within the selected test limit, the device has passed this portion of the verification.



Note 50 Ω input impedance with 20 V range is not a valid configuration.

9. Move the calibrator test head to the digitizer input channel 1 and repeat steps 1 through 8 for every configuration in Table 4 (NI 5122) or Table 5 (NI 5124), replacing "0" with "1" for the **channelList** parameter.

Table 4. NI 5122 Vertical Offset Calibration Test Limits and Published Specifications

Range	NI PXI-5122		NI PCI-5122	
	Calibration Test Limits (V)	Published Specifications (V)	Calibration Test Limits (V)	Published Specifications (V)
0.2	± 0.00057	± 0.001	± 0.00114	± 0.002
0.4	± 0.00057	± 0.001	± 0.00114	± 0.002
1	± 0.00057	± 0.001	± 0.00114	± 0.002
2	± 0.00057	± 0.001	± 0.00114	± 0.002
4	± 0.0033	± 0.008	± 0.0033	± 0.008
10	± 0.0033	± 0.008	± 0.0033	± 0.008
20	± 0.0039	± 0.01	± 0.0039	± 0.01

Table 5. NI 5124 Vertical Offset Calibration Test Limits and Published Specifications

Range	NI PXI-5124		NI PCI-5124	
	Calibration Test Limits (V)	Published Specifications (V)	Calibration Test Limits (V)	Published Specifications (V)
0.2	± 0.00080	± 0.0013	± 0.0013	± 0.0018
0.4	± 0.00080	± 0.0013	± 0.0013	± 0.0018
1	± 0.00110	± 0.0015	± 0.0016	± 0.0021
2	± 0.00110	± 0.0015	± 0.0016	± 0.0021
4	± 0.00575	± 0.010	± 0.005	± 0.010
10	± 0.00575	± 0.010	± 0.005	± 0.010
20	± 0.00575	± 0.01	± 0.005	± 0.010

You have finished verifying the vertical offset accuracy of the NI 5122/5124.

Vertical Gain Accuracy

To verify vertical gain accuracy, complete steps 1 through 11 for each of the 39 configuration iterations in Table 3.

1. Call `niScope_ConfigureChanCharacteristics` (niScope Configure Chan Characteristics VI) with the following parameters:
 - **channelList:** "0"
 - **inputImpedance:** The Input Impedance value for the current iteration from Table 3
 - **maxInputFrequency:** The Maximum Input Frequency value for the current iteration from Table 3
2. Call `niScope_ConfigureVertical` (niScope Configure Vertical VI) with the following parameters:
 - **channelList:** "0"
 - **range:** The Range value for the current iteration from Table 3
 - **offset:** 0.0
 - **coupling:** NISCOPE_VAL_DC
 - **probeAttenuation:** 1.0
 - **enabled:** NISCOPE_VAL_TRUE
3. Call `niScope_ConfigureHorizontalTiming` (niScope Configure Horizontal Timing VI) with the following parameters:
 - **minSampleRate:** 10,000,000
 - **minNumPts:** 100,000
 - **refPosition:** 50.0
 - **numRecords:** 1
 - **enforceRealtime:** NISCOPE_VAL_TRUE
4. Call `niScope_Commit` (niScope Commit VI) with the following parameter:
 - **vi:** The instrument handle you obtained from `niScope_init`
5. Connect the calibrator test head directly to the channel 0 input of the digitizer and output the positive voltage from Table 6 (NI 5122) or Table 7 (NI 5124) that corresponds to the vertical range used. Be sure to configure the load impedance of the calibrator to match the input impedance of the digitizer.
6. Wait 2,500 ms for the impedance matching of the calibrator to settle.
7. Call `niScope_InitiateAcquisition` (niScope Initiate Acquisition VI) with the following parameter:
 - **vi:** The instrument handle you obtained from `niScope_init`

8. Call `niScope_FetchMeasurement` (niScope Fetch Measurement VI) with the following parameters:
 - **channelList:** "0"
 - **timeout:** 1.0
 - **scalarMeasFunction:** NISCOPE_VAL_VOLTAGE_AVERAGE
9. Output the negative voltage listed in Table 6 (NI 5122) or Table 7 (NI 5124) with the calibrator.
10. Wait 750 ms for the output of the calibrator to settle.
11. Call `niScope_FetchMeasurement` (niScope Fetch Measurement VI) with the following parameters:
 - **channelList:** "0"
 - **timeout:** 1.0
 - **scalarMeasFunction:** NISCOPE_VAL_VOLTAGE_AVERAGE
12. Compute the error in the vertical gain as a percentage of input using the formula:

$$\text{error} = (((a - b) / (c - d)) - 1) * 100$$

where *a* is the measured positive voltage, *b* is the measured negative voltage, *c* is the applied positive voltage, and *d* is the applied negative voltage.

Compare the resulting percent error to the Calibration Test Limits or the Published Specifications listed in Table 6 (NI 5122) or Table 7 (NI 5124). If the result is within the selected test limit, the device has passed this portion of the verification.

Table 6. NI 5122 Vertical Gain Stimuli, Calibration Test Limits, and Published Specifications

Range (V)	Positive Input (V)	Negative Input (V)	Calibration Test Limits	Published Specifications
0.2	0.09	-0.09	±0.37%	±0.65%
0.4	0.18	-0.18	±0.37%	±0.65%
1	0.45	-0.45	±0.37%	±0.65%
2	0.9	-0.9	±0.37%	±0.65%
4	1.8	-1.8	±0.37%	±0.65%
10	4.5	-4.5	±0.37%	±0.65%
20	9	-9	±0.37%	±0.65%

Table 7. NI 5124 Vertical Gain Stimuli, Calibration Test Limits, and Published Specifications

Range (V)	Positive Input (V)	Negative Input (V)	Calibration Test Limits	Published Specifications
0.2	0.09	-0.09	±0.3975%	±0.65%
0.4	0.18	-0.18	±0.3975%	±0.65%
1	0.45	-0.45	±0.3975%	±0.65%
2	0.9	-0.9	±0.3975%	±0.65%
4	1.8	-1.8	±0.3975%	±0.65%
10	4.5	-4.5	±0.3975%	±0.65%
20	9	-9	±0.3975%	±0.65%

13. Move the calibrator test head to the digitizer input channel 1 and repeat steps 1 through 12 for every configuration in Table 3, replacing "0" with "1" for the **channelList** parameter.

You have finished verifying the vertical gain accuracy of the NI 5122/5124.

Programmable Vertical Offset Accuracy

Complete the following steps to verify the programmable vertical offset accuracy for each digitizer channel.

1. Call `niScope_ConfigureChanCharacteristics` (`niScope Configure Chan Characteristics VI`) with the following parameters:
 - **channelList:** "0"
 - **inputImpedance:** `NISCOPE_VAL_50_OHM`
 - **maxInputFrequency:** 100,000,000 (for NI 5122), 150,000 (for NI 5124)
2. Call `niScope_ConfigureVertical` (`niScope Configure Vertical VI`) with the following parameters:
 - **channelList:** "0"
 - **range:** 2.0
 - **offset:** 0.75
 - **coupling:** `NISCOPE_VAL_DC`
 - **probeAttenuation:** 1.0
 - **enabled:** `NISCOPE_VAL_TRUE`

3. Call `niScope_ConfigureHorizontalTiming` (niScope Configure Horizontal Timing VI) with the following parameters:
 - **minSampleRate:** 10,000,000
 - **minNumPts:** 100,000
 - **refPosition:** 50.0
 - **numRecords:** 1
 - **enforceRealtime:** NISCOPE_VAL_TRUE
4. Call `niScope_Commit` (niScope Commit VI) with the following parameter:
 - **vi:** The instrument handle you obtained from `niScope_init`
5. Connect the calibrator test head directly to the channel 0 input of the digitizer and output 0.75 V with a 50 Ω load impedance.
6. Wait 2,500 ms for the impedance matching of the calibrator to settle.
7. Call `niScope_InitiateAcquisition` (niScope Initiate Acquisition VI) with the following parameter:
 - **vi:** The instrument handle you obtained from `niScope_init`
8. Call `niScope_FetchMeasurement` (niScope Fetch Measurement VI) with the following parameters:
 - **channelList:** "0"
 - **timeout:** 1.0
 - **scalarMeasFunction:** NISCOPE_VAL_VOLTAGE_AVERAGE
9. Output -0.75 V with the calibrator.
10. Call `niScope_ConfigureVertical` (niScope Configure Vertical VI) with the following parameters:
 - **channelList:** "0"
 - **range:** 2.0
 - **offset:** -0.75
 - **coupling:** NISCOPE_VAL_DC
 - **probeAttenuation:** 1.0
 - **enabled:** NISCOPE_VAL_TRUE
11. Call `niScope_Commit` (niScope Commit VI) with the following parameter:
 - **vi:** The instrument handle you obtained from `niScope_init`
12. Wait 750 ms for the output of the calibrator to settle.
13. Call `niScope_InitiateAcquisition` (niScope Initiate Acquisition VI) with the following parameter:
 - **vi:** The instrument handle you obtained from `niScope_init`

14. Call `niScope_FetchMeasurement` (niScope Fetch Measurement VI) with the following parameters:
 - **channelList:** "0"
 - **timeout:** 1.0
 - **scalarMeasFunction:** NISCOPE_VAL_VOLTAGE_AVERAGE
15. Compute the error in the programmable vertical offset as a percentage of input using the formula:

$$\text{error} = (((a - b) / 1.5) - 1) * 100$$

where a is the measured positive voltage and b is the measured negative voltage.

Compare the resulting percent to the Calibration Test Limits or the Published Specifications listed in Table 8. If the result is within the selected test limit, the device has passed this portion of the verification.

Table 8. NI 5122/5124 Programmable Vertical Offset Accuracy

Calibration Test Limits	Published Specifications
±0.36%	±0.4%

16. Move the calibrator test head to the digitizer input channel 1 and repeat steps 1 through 15, replacing "0" with "1" for the **channelList** parameter.

You have finished verifying the programmable vertical offset accuracy of the NI 5122/5124.

Timing Accuracy

Complete the following steps to verify the timing accuracy for the NI 5122/5124.

1. Call `niScope_ConfigureChanCharacteristics` (niScope Configure Chan Characteristics VI) with the following parameters:
 - **channelList:** "0"
 - **inputImpedance:** NISCOPE_VAL_50_OHM
 - **maxInputFrequency:** 20,000,000
2. Call `niScope_ConfigureVertical` (niScope Configure Vertical VI) with the following parameters:
 - **channelList:** "0"
 - **range:** 2.0
 - **offset:** 0.0

- **coupling:** NISCOPE_VAL_DC
 - **probeAttenuation:** 1.0
 - **enabled:** NISCOPE_VAL_TRUE
3. Call `niScope_ConfigureHorizontalTiming` (niScope Configure Horizontal Timing VI) with the following parameters:
 - **minSampleRate:** 100,000,000
 - **minNumPts:** 1,000,000
 - **refPosition:** 50.0
 - **numRecords:** 1
 - **enforceRealtime:** NISCOPE_VAL_TRUE
 4. Call `niScope_Commit` (niScope Commit VI) with the following parameter:
 - **vi:** The instrument handle you obtained from `niScope_init`
 5. Connect the calibrator test head directly to the channel 0 input of the digitizer. Configure the calibrator to output an exact 11 MHz sine wave with 1 V peak-to-peak amplitude and 50 Ω load impedance.
 6. Wait 750 ms for the impedance matching and frequency of the calibrator to settle.
 7. Call `niScope_InitiateAcquisition` (niScope Initiate Acquisition VI) with the following parameter:
 - **vi:** The instrument handle you obtained from `niScope_init`
 8. Call `niScope_FetchMeasurement` (niScope Fetch Measurement VI) with the following parameters:
 - **channelList:** "0"
 - **timeout:** 1.0
 - **scalarMeasFunction:** NISCOPE_VAL_FFT_FREQUENCY
 9. Compute the error in timing as parts per million (ppm) using the formula:

$$\text{error} = (a - 11,000,000) / 11$$

where a is the measured frequency.

Compare the result to the Calibration Test Limits or the Published Specifications listed in Table 9. If the result is within the selected test limit, the device has passed this portion of the verification.

Table 9. NI 5122/5124 Timing Accuracy

Calibration Test Limits	Published Specifications
±5.3 ppm	±25 ppm



Note The same time source is used for both channel 0 and channel 1, so you only need to verify the timing accuracy on one channel.

You have finished verifying the timing accuracy of the NI 5122/5124.

Bandwidth and Flatness

Complete the following steps for each of the six configurations listed in Table 10 (NI 5122) or Table 11 (NI 5124) to verify the bandwidth and flatness for each digitizer channel.

1. Call `niScope_ConfigureChanCharacteristics` (niScope Configure Chan Characteristics VI) with the following parameters:
 - **channelList:** "0"
 - **inputImpedance:** The Input Impedance value for the current iteration in Table 10 (NI 5122) or Table 11 (NI 5124)
 - **maxInputFrequency:** The Maximum Input Frequency for the current iteration in Table 10 (NI 5122) or Table 11 (NI 5124)
2. Call `niScope_ConfigureVertical` (niScope Configure Vertical VI) with the following parameters:
 - **channelList:** "0"
 - **range:** The Range value for the current iteration in Table 10 (NI 5122) or Table 11 (NI 5124)
 - **offset:** 0.0
 - **coupling:** NISCOPE_VAL_DC
 - **probeAttenuation:** 1.0
 - **enabled:** NISCOPE_VAL_TRUE
3. Call `niScope_ConfigureHorizontalTiming` (niScope Configure Horizontal Timing VI) with the following parameters:
 - **minSampleRate:** 10,000,000
 - **minNumPts:** 30,000
 - **refPosition:** 50.0
 - **numRecords:** 1
 - **enforceRealtime:** NISCOPE_VAL_TRUE
4. Call `niScope_Commit` (niScope Commit VI) with the following parameter:
 - **vi:** The instrument handle you obtained from `niScope_init`
5. Connect the calibrator test head directly to the channel 0 input of the digitizer. Configure the calibrator to output a 50 kHz sine wave with peak-to-peak voltage amplitude set to half the vertical range of the

- digitizer. Configure the load impedance of the calibrator to match the input impedance of the digitizer.
6. Wait 1000 ms for the impedance matching of the calibrator to settle.
 7. Call `niScope_InitiateAcquisition` (niScope Initiate Acquisition VI) with the following parameter:
 - **vi**: The instrument handle you obtained from `niScope_init`
 8. Call `niScope_FetchMeasurement` (niScope Fetch Measurement VI) with the following parameters:
 - **channelList**: "0"
 - **timeout**: 1.0
 - **scalarMeasFunction**: NISCOPE_VAL_VOLTAGE_RMS
 9. Call `niScope_ConfigureHorizontalTiming` (niScope Configure Horizontal Timing VI) with the following parameters:
 - **minSampleRate**: 100,000,000 (for NI 5122),
200,000,000 (for NI 5124)
 - **minNumPts**: 300,000
 - **refPosition**: 50.0
 - **numRecords**: 1
 - **enforceRealtime**: NISCOPE_VAL_TRUE
 10. Call `niScope_Commit` (niScope Commit VI) with the following parameter:
 - **vi**: The instrument handle you obtained from `niScope_init`
 11. Wait 500 ms for the output of the calibrator to settle.
 12. Repeat steps 12a through 12d for each Input Frequency listed for the current iteration in Table 10 (NI 5122) or Table 11 (NI 5124).
 - a. Configure the calibrator to output the Input Frequency for the current iteration from Table 10 (NI 5122) or Table 11 (NI 5124).
 - b. Call `niScope_InitiateAcquisition` (niScope Initiate Acquisition VI) with the following parameter:
 - **vi**: The instrument handle you obtained from `niScope_init`
 - c. Call `niScope_FetchMeasurement` (niScope Fetch Measurement VI) with the following parameters:
 - **channelList**: "0"
 - **timeout**: 1.0
 - **scalarMeasFunction**: NISCOPE_VAL_VOLTAGE_RMS

- d. Compute the power difference using the formula:

$$\text{power} = (20\log_{10} a) - (20\log_{10} b)$$

where a is the measured RMS voltage in step 12c and b is the measured RMS voltage in step 8.

If the result is within the test limits from Table 10 (NI 5122) or Table 11 (NI 5124), the device has passed this portion of the verification.

Move the calibrator test head to the digitizer input channel 1 and repeat steps 1 through 12, replacing "0" with "1" for the **channelList** parameter.

Table 10. NI 5122 Bandwidth and Flatness Stimuli and Limits

Iteration	Max Input Frequency	Input Impedance	Range (V)	Input Frequency (Hz)	NI 5122 Calibration Test Limits		NI 5122 Published Specifications	
					Max Level (dB)	Min Level (dB)	Max Level (dB)	Min Level (dB)
1	100 MHz	50 Ω	0.2	20,100,000	0.27	-0.27	0.4	-0.4
				40,100,000	0.77	-0.77	1	-1
				84,400,000	3	-3	3 at 80 MHz	-3 at 80 MHz
2	100 MHz	50 Ω	0.4	20,100,000	0.27	-0.27	0.4	-0.4
				50,100,000	0.77	-0.77	1	-1
				103,700,000	3	-3	3 at 100 MHz	-3 at 100 MHz
3	100 MHz	1 M Ω	0.2	20,100,000	0.27	-0.27	0.4	-0.4
				40,100,000	0.77	-0.77	1	-1
				84,400,000	3	-3	3 at 80 MHz	-3 at 80 MHz
4	100 MHz	1 M Ω	0.4	20,100,000	0.27	-0.27	0.4	-0.4
				50,100,000	0.77	-0.77	1	-1
				103,700,000	3	-3	3 at 100 MHz	-3 at 100 MHz
5	35 MHz	50 Ω	0.4	16,100,000	1.05	-1.05	1.2	-1.2
				32,100,000	1.27	-1.27	1.6	-1.6
				36,100,000	3	-3	3 at 35 MHz	-3 at 35 MHz
6	20 MHz	50 Ω	0.4	15,100,000	1	-3	N/A	-3 at 20 MHz
				25,100,000	-3	-20	-3 at 20 MHz	N/A

Table 11. NI 5124 Bandwidth and Flatness Stimuli and Limits

Iteration	Max Input Frequency	Input Impedance	Range (V)	Input Frequency (Hz)	NI 5124 Calibration Test Limits		NI 5124 Published Specifications	
					Max Level (dB)	Min Level (dB)	Max Level (dB)	Min Level (dB)
1	150 MHz	50 Ω	0.2	20,100,000	0.33	-0.33	0.6	-0.6
				40,100,000	0.83	-0.83	1.5	-1.5
				96,000,000	3	-3	N/A	-3 at 85 MHz
2	150 MHz	50 Ω	0.4	20,100,000	0.33	-0.33	0.5	-0.5
				50,100,000	0.83	-0.83	1	-1
				100,100,000	1.53	-1.53	1.7	-1.7
				161,800,000	3	-3	N/A	-3 at 150 MHz
3	150 MHz	1 M Ω	0.2	20,100,000	0.42	-0.42	0.6	-0.6
				40,100,000	1.3	-1.3	1.5	-1.5
				89,100,000	3	-3	N/A	-3 at 75 MHz
4	150 MHz	1 M Ω	0.4	20,100,000	0.33	-0.33	0.5	-0.5
				50,100,000	0.83	-0.83	1	-1
				100,100,000	1.53	-1.53	1.7	-1.7
				159,500,000	3	-3	N/A	-3 at 145 MHz
5	60 MHz	50 Ω	4	22,100,000	1.8	1.0	2.0	-1.0
				42,100,000	0.1	-0.9	2.0	-1.0
				59,100,000	3	-3	N/A	-3 at 60 MHz
6	20 MHz	50 Ω	0.4	15,100,000	1	-3	N/A	-3 at 20 MHz
				25,100,000	-3	-20	-3 at 20 MHz	N/A

You have finished verifying the bandwidth and flatness of the NI 5122/5124.

Trigger Sensitivity

Complete the following steps using the entries for iterations 1 through 4 in Table 12 to verify trigger sensitivity for input channel 0.

1. Call `niScope_ConfigureChanCharacteristics` (niScope Configure Chan Characteristics VI) with the following parameters:
 - **channelList:** "0"
 - **inputImpedance:** NISCOPE_VAL_50_OHM
 - **maxInputFrequency:** 100,000,000
2. Call `niScope_ConfigureVertical` (niScope Configure Vertical VI) with the following parameters:
 - **channelList:** "0"
 - **range:** 0.2
 - **offset:** 0.0
 - **coupling:** NISCOPE_VAL_DC
 - **probeAttenuation:** 1.0
 - **enabled:** NISCOPE_VAL_TRUE
3. Call `niScope_ConfigureHorizontalTiming` (niScope Configure Horizontal Timing VI) with the following parameters:
 - **minSampleRate:** 100,000,000
 - **minNumPts:** 1,000
 - **refPosition:** 50.0
 - **numRecords:** 50
 - **enforceRealtime:** NISCOPE_VAL_TRUE
4. Call `niScope_ConfigureTriggerEdge` with the following parameters:
 - **triggerSource:** The Trigger source value from Table 12
 - **level:** The Level value from Table 12
 - **slope:** The Slope value from Table 12
 - **triggerCoupling:** NISCOPE_VAL_DC
 - **holdoff:** 0
 - **delay:** 0



Note The trigger level is set to center the trigger hysteresis window at 0.0 V.

5. Call `niScope_Commit` (niScope Commit VI) with the following parameter:
 - **vi**: The instrument handle you obtained from `niScope_init`
6. Connect the calibrator test head directly to the channel 0 input of the digitizer. Configure the calibrator to output the signal from Table 12.
7. Wait 1,500 ms for the calibrator impedance matching and frequency to settle.
8. Call `niScope_InitiateAcquisition` (niScope Initiate Acquisition VI) with the following parameter:
 - **vi**: The instrument handle you obtained from `niScope_init`
9. Call `niScope_Fetch` (niScope Multi Fetch VI) with the following parameters:
 - **channelList**: "0"
 - **timeout**: 2.0
 - **numSamples**: -1

If the digitizer does not time out, the digitizer has passed this portion of the verification. If the digitizer does time out, you must call `niScope_Abort` (niScope Abort VI) to end the acquisition.

10. To verify the trigger sensitivity on channel 1, repeat steps 1 through 9 using the values from Table 12, iterations 5 through 8. Also change **channelList** to "1" in steps 1, 2, and 9, and connect the calibrator test head to channel 1 in step 6.
11. To verify the trigger sensitivity on the external trigger channel, repeat steps 1 through 9 using the values from Table 12, iterations 9 through 12. Do not change the **channelList** inputs. Connect the calibrator test head to the external trigger channel (TRIG) in step 6.

You have finished verifying the trigger sensitivity for the NI 5122/5124.

Table 12. NI 5122/5124 Trigger Sensitivity Inputs

Iteration	Trigger Source	Level	Slope	Calibrator	
				NI 5122	NI 5124
1	0	1.25 mV	NISCOPE_VAL_POSITIVE	4.84 mV _{pk-pk} 50 MHz sine wave with 50 Ω load impedance	4.84 mV _{pk-pk} 50 MHz sine wave with 50 Ω load impedance
2	0	-1.25 mV	NISCOPE_VAL_NEGATIVE		

Table 12. NI 5122/5124 Trigger Sensitivity Inputs (Continued)

Iteration	Trigger Source	Level	Slope	Calibrator	
				NI 5122	NI 5124
3	0	1.25 mV	NISCOPE_VAL_ POSITIVE	9.70 mV _{pk-pk} 100 MHz sine wave with 50 Ω load impedance	19.0 mV _{pk-pk} 150 MHz sine wave with 50 Ω load impedance
4	0	-1.25 mV	NISCOPE_VAL_ NEGATIVE		
5	1	1.25 mV	NISCOPE_VAL_ POSITIVE	4.84 mV _{pk-pk} 50 MHz sine wave with 50 Ω load impedance	4.84 mV _{pk-pk} 50 MHz sine wave with 50 Ω load impedance
6	1	-1.25 mV	NISCOPE_VAL_ NEGATIVE		
7	1	1.25 mV	NISCOPE_VAL_ POSITIVE	9.7 mV _{pk-pk} 100 MHz sine wave with 50 Ω load impedance	19.0 mV _{pk-pk} 150 MHz sine wave with 50 Ω load impedance
8	1	-1.25 mV	NISCOPE_VAL_ NEGATIVE		
9	VAL_ EXTERNAL	62.5 mV	NISCOPE_VAL_ POSITIVE	240 mV _{pk-pk} 100 MHz sine wave with 1 MΩ load impedance	240 mV _{pk-pk} 100 MHz sine wave with 1 MΩ load impedance
10	VAL_ EXTERNAL	-62.5 mV	NISCOPE_VAL_ NEGATIVE		
11	VAL_ EXTERNAL	62.5 mV	NISCOPE_VAL_ POSITIVE	940 mV _{pk-pk} 200 MHz sine wave with 1 MΩ load impedance	940 mV _{pk-pk} 200 MHz sine wave with 1 MΩ load impedance
12	VAL_ EXTERNAL	-62.5 mV	NISCOPE_VAL_ NEGATIVE		

Adjusting the NI 5122/5124

If the NI 5122/5124 successfully passed each of the verification procedures within the calibration test limits, then an adjustment is recommended but not required to guarantee its published specifications for the next two years. If the digitizer was not within the calibration test limits for each of the verification procedures, you can perform the adjustment procedure to improve the accuracy of the digitizer. Refer to the [External Calibration Options](#) section to determine which procedures to perform.

An adjustment is required only once every two years. Following the adjustment procedure automatically updates the calibration date and temperature in the EEPROM of the digitizer.



Note If the digitizer passed the entire verification procedure within the calibration test limits and you do not want to perform an adjustment, you can update the calibration date and onboard calibration temperature without making any adjustments by completing *only* steps 3 and 10 in this section.

Complete all of the following steps to externally adjust the NI 5122/5124.

1. Connect the calibrator to the NI 5122/5124.
 - ◆ If you are using a Fluke 9500B/Wavetek 9500 calibrator:
 - a. Using a BNC cable, connect REF FREQUENCY OUTPUT on the back of the calibrator to the channel 0 input of the digitizer. Make sure the output of the reference frequency is enabled and set to 10 MHz.
 - b. Connect the calibrator test head directly to the channel 1 input of the digitizer.
 - c. Configure the calibrator to output an exact 4 V DC signal into a 1 M Ω load impedance.
 - ◆ If you are using a calibrator other than a Fluke9500B/Wavetek 9500:
 - a. Connect a 10 MHz, 1 V_{pp} sine or square wave source to channel 0.
 - b. Connect the oscilloscope calibrator DC source to channel 1.
 - c. Configure the calibrator to output an exact 4 V DC signal into a 1 M Ω load impedance (channel 1).
2. Wait 2,750 ms for the impedance matching of the calibrator to settle.
3. Call `niScope_CalStart` (niScope Cal Start VI) using the user password. The factory default password for the NI 5122/5124 is NI.
4. Call `niScope_CalAdjustVCXO` (niScope Cal Adjust VCXO VI) with the following parameter:
 - **stimulusFreq:** 10,000,000



Note The 10 MHz stimulus is automatically taken from channel 0.

5. Call `niScope_CalAdjustRange` (niScope Cal Adjust Range VI) with the following parameters:
 - **channelName:** "1"
 - **range:** 0
 - **stimulus:** 4.0
6. Configure the calibrator to ground its output at channel 1.

7. Call `niScope_CalAdjustRange` (niScope Cal Adjust Range VI) with the following parameters:
 - **channelName:** "1"
 - **range:** 0
 - **stimulus:** 0.0
8. Disconnect or disable all inputs to the digitizer.
9. Call `niScope_CalSelfCalibrate` (niScope Cal Self Calibrate VI) with the following parameters:
 - **channelList:** `VI_NULL`
 - **option:** `VI_NULL`
10. Call `niScope_CalEnd` with the following parameters:
 - **sessionHandle:** The instrument handle you obtained from `niScope_CalStart`
 - **action:** `NISCOPE_VAL_ACTION_STORE` to save the results of the calibration

You have finished adjusting the NI 5122/5124. It is not necessary to adjust each channel individually. However, you should repeat the entire verification procedure to verify a successful adjustment.

Calibration Utilities

NI-SCOPE supports several calibration utilities that allow you to retrieve information about adjustments performed on the NI 5122/5124, change the external calibration password, and store small amounts of information in the onboard EEPROM. You can retrieve some data using MAX, however, you can retrieve all the data programmatically using NI-SCOPE functions.

MAX

To retrieve data using MAX, complete the following steps:

1. Select the device from which you want to retrieve information from **My System»Devices and Interfaces»NI-DAQmx Devices**.
2. Select the **Calibration** tab in the lower right corner.

You should see information about the last date and temperature for both external and self-calibration.

NI-SCOPE

NI-SCOPE provides a full complement of calibration utility functions and VIs. Refer to the *NI High-Speed Digitizers Help* for the complete function reference and VI reference. The utility functions include:

- `niScope_CalChangePassword` (niScope Cal Change Password VI)
- `niScope_CalFetchCount` (niScope Cal Fetch Count VI)
- `niScope_CalFetchDate` (niScope Cal Fetch Date VI)
- `niScope_CalFetchMiscInfo` (niScope Cal Fetch Misc Info VI)
- `niScope_CalFetchTemperature` (niScope Cal Fetch Temperature VI)
- `niScope_CalStoreMiscInfo` (niScope Cal Store Misc Info VI)

Calibration Function References

The functions used in this procedure, including all calibration functions, are documented in the *NI-SCOPE Function Reference Help* and the *NI-SCOPE VI Reference Help*, both of which you can access from the *NI High-Speed Digitizers Help* (**Start»Programs»National Instruments»NI-SCOPE»Documentation**).

Where to Go for Support

The National Instruments Web site is your complete resource for technical support. At ni.com/support you have access to everything from troubleshooting and application development self-help resources to email and phone assistance from NI Application Engineers.

A Declaration of Conformity (DoC) is our claim of compliance with the Council of the European Communities using the manufacturer's declaration of conformity. This system affords the user protection for electronic compatibility (EMC) and product safety. You can obtain the DoC for your product by visiting ni.com/certification. If your product supports calibration, you can obtain the calibration certificate for your product at ni.com/calibration.

National Instruments corporate headquarters is located at 11500 North Mopac Expressway, Austin, Texas, 78759-3504. National Instruments also has offices located around the world to help address your support needs. For telephone support in the United States, create your service request at ni.com/support and follow the calling instructions or dial 512 795 8248. For telephone support outside the United States, contact your local branch office:

Australia 1800 300 800, Austria 43 0 662 45 79 90 0,
Belgium 32 0 2 757 00 20, Brazil 55 11 3262 3599,
Canada 800 433 3488, China 86 21 6555 7838,
Czech Republic 420 224 235 774, Denmark 45 45 76 26 00,
Finland 385 0 9 725 725 11, France 33 0 1 48 14 24 24,
Germany 49 0 89 741 31 30, India 91 80 51190000,
Israel 972 0 3 6393737, Italy 39 02 413091, Japan 81 3 5472 2970,
Korea 82 02 3451 3400, Lebanon 961 0 1 33 28 28,
Malaysia 1800 887710, Mexico 01 800 010 0793,
Netherlands 31 0 348 433 466, New Zealand 0800 553 322,
Norway 47 0 66 90 76 60, Poland 48 22 3390150,
Portugal 351 210 311 210, Russia 7 095 783 68 51,
Singapore 1800 226 5886, Slovenia 386 3 425 4200,
South Africa 27 0 11 805 8197, Spain 34 91 640 0085,
Sweden 46 0 8 587 895 00, Switzerland 41 56 200 51 51,
Taiwan 886 02 2377 2222, Thailand 662 992 7519,
United Kingdom 44 0 1635 523545

National Instruments, NI, ni.com, and LabVIEW are trademarks of National Instruments Corporation. Refer to the *Terms of Use* section on ni.com/legal for more information about National Instruments trademarks. Other product and company names mentioned herein are trademarks or trade names of their respective companies. For patents covering National Instruments products, refer to the appropriate location: **Help»Patents** in your software, the `patents.txt` file on your CD, or ni.com/patents.