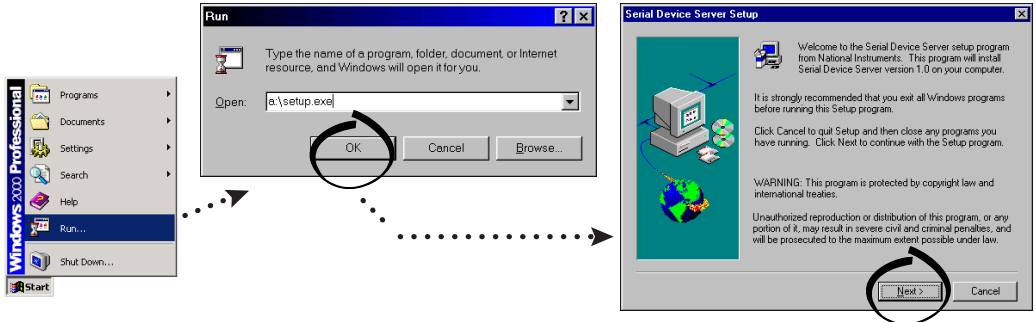


GETTING STARTED

Serial Device Server Installation for Windows 2000/NT 4.0

1

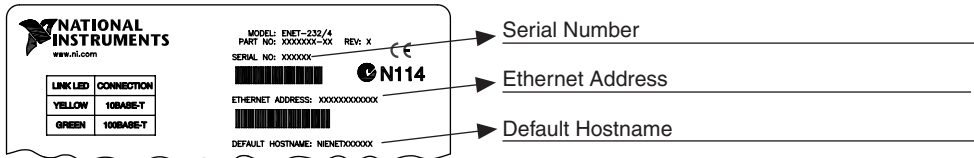
Log on as Administrator, insert disk 1, and run the NI Serial Server Software Setup program.



2

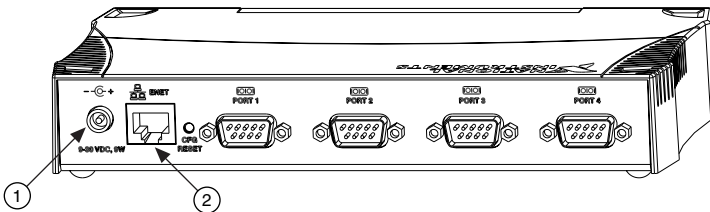
Record the following information from the baseplate label here:

This information helps identify this device on the network.



3

Connect power and Ethernet cables.

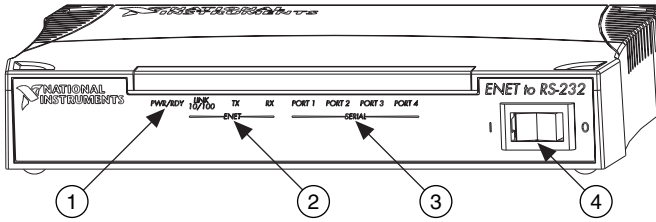


Key

- 1 Power Connection
- 2 Ethernet Connection

4

Power on serial device server.



Key

- 1 PWR/RDY LED
- 2 Ethernet LEDs
- 3 Serial Port LEDs
- 4 Power Switch

5

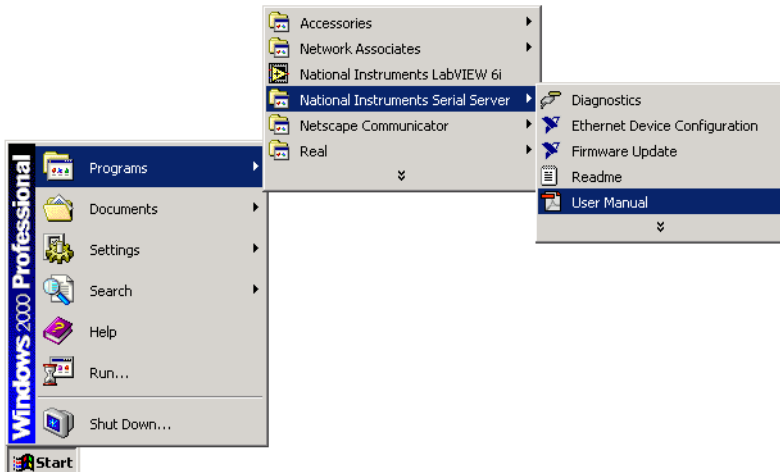
Wait up to 90 seconds and observe PWR/RDY LED.

Steady yellow—Device was automatically configured. Go to Step 6.

Steady red—Contact National Instruments.

Slow blinking pattern—See Appendix B, *PWR/RDY LED Signaling*, in online user manual and contact National Instruments.

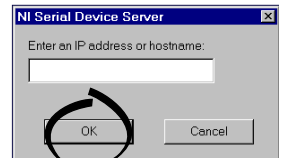
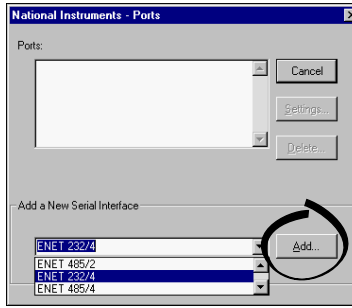
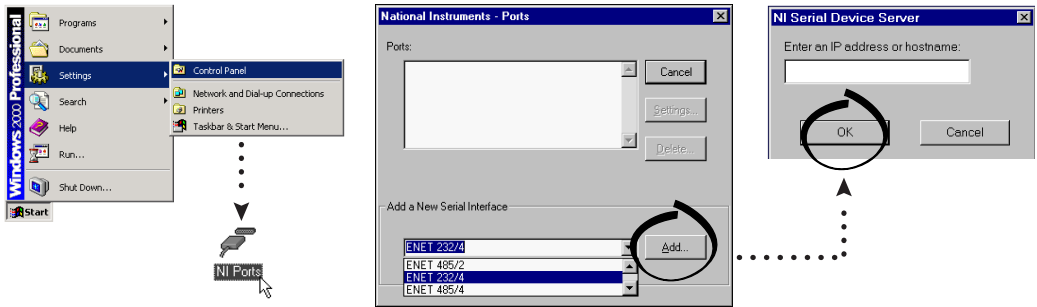
Continues flickering rapidly—See Chapter 3, *Ethernet Configuration*, in online user manual to manually configure your device.



6

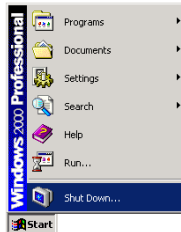
Configure the NI Serial server software.

Open NI Ports utility and select your serial device server model from the pull-down. Enter the default hostname if your device was automatically configured. Otherwise, use the IP address assigned with the NI Ethernet Device Configuration utility.



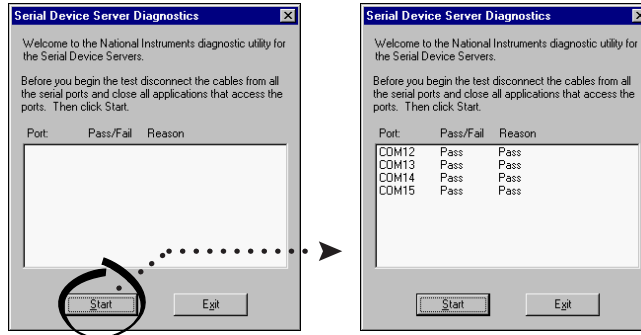
7

Remove disk and restart computer.



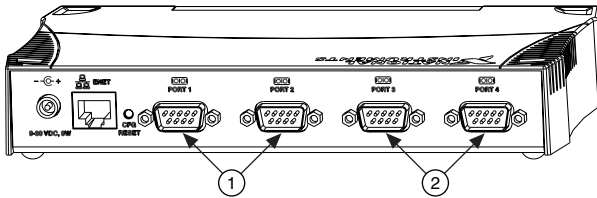
8

Verify the installation.



9

Connect serial devices to serial ports.



Key

- 1 Serial Ports 1 and 2
- 2 Serial Ports 3 and 4
(on 4-port models only)



ni.com/support
ni.com/ask

Tel: (512) 795-8248 • Fax: (512) 683-5678 • ftp.ni.com

© Copyright 2000 National Instruments Corporation. All rights reserved. Product and company names mentioned herein are trademarks or trade names of their respective companies.



322990A-01

Dec00