

.295 [7.49]

.249 [6.33]

1.185 [30.11]

2.792 [70.92]

3.745 [95.12]

.286 [7.26]

.722 [18.34]

5.665 [143.89]

1.960 [49.78]

4.376 [111.15]

2.315 [58.8]

6.955 [176.66]

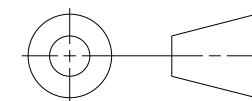
CUSTOMER DRAWING

NOTES: UNLESS OTHERWISE SPECIFIED.

UNLESS OTHERWISE SPECIFIED  
 DIMENSIONS ARE IN INCHES AND  
 [MILLIMETERS].

DO NOT SCALE DRAWING

THIRD ANGLE PROJECTION



AUSTIN, TEXAS

TITLE

PCIe-1429 and PCIe-1430  
 CAMERALINK FRAMEGRABBERS

SIZE CODE IDENT NO. MM/DD/YYYY

B

7U296

05/25/2010

SCALE: 1/1

SHEET | OF |